

**GENERAL NOTES:**

1. DESIGN OF THE GUARD IS IN ACCORDANCE WITH SECTION 9.8.8.2 OF THE 2012 OBC AND 2010 NBCC, AND SB-7 OF THE ONTARIO BUILDING CODE.
2. GLASS PANELS CAN CARRY A 225 LB (1.0 kN) HORIZONTAL CONCENTRATED LOAD AT ANY POINT.
3. A UNIFORM VERTICAL LOAD OF 100 PLF (1.5 kN/m) HAS BEEN APPLIED TO THE TOP OF THE GUARD.
4. THE FOLLOWING HORIZONTAL LOADS HAVE BEEN APPLIED TO THE GUARD:
  - (i) 0.5 kN/m (34 lb/ft) UNIFORM LOAD ALONG THE TOP
  - OR
  - (ii) 1.0 kN (225 lb) CONCENTRATED LOAD AT ANY POINT, WHICHEVER GOVERNS.
5. THESE DETAILS ARE FOR USE IN HOUSES AND SMALL BUILDINGS CONFORMING TO THE REQUIREMENTS OF PART 9 OF THE 2012 ONTARIO BUILDING CODE AND THE 2010 NATIONAL BUILDING CODE. THESE DETAILS ARE FOR GUARDS NOT SERVING NOT MORE THAN TWO DWELLING UNITS AND PROVIDE AN ALTERNATIVE TO THE DETAILS GIVEN IN SB-7 OF THE ONTARIO BUILDING CODE.
6. DESIGN IS VALID UNTIL DECEMBER 31, 2016.

**COMPONENTS**

- ① LIV BUILDING PRODUCTS INVISIRAIL TOP CLIPS OR INVISIRAIL LITE 10 CLIPS.
- ② 4x4 POST ANCHORED TO FLOOR STRUCTURE IN ACCORDANCE WITH DETAIL EB-5 TO EB-6 OF SB-7 OF THE ONTARIO BUILDING CODE. POSTS SHALL BE NO.2 OR BETTER SPF PRESSURE TREATED WITH A WATER-BORNE PRESERVATIVE, UNTREATED NO.2 OR BETTER CEDAR, OR CLEAR STRAIGHT-GRAINED DARK RED MERANTI.
- ③ 10mm INVISIRAIL TEMPERED GLASS IN ACCORDANCE WITH CAN/CGSB-12.1-M WITH NOTCH FOR BOTTOM CLIP BY LIV BUILDING PRODUCTS. ALL GLASS TO BE HEAT SOAKED IN ACCORDANCE WITH SB-13 OF THE ONTARIO BUILDING CODE.
- ④ LIV BUILDING PRODUCTS INVISIRAIL BOTTOM CLIPS OR INVISIRAIL LITE 10 CLIPS.
- ⑤ 6x6 NO.1 OR BETTER CEDAR POST ANCHORED TO FLOOR STRUCTURE AS PER DWG S10.
- ⑥ 3/8" THICK GRADE 304 STAINLESS STEEL INVISIRAIL POST
- ⑦ HOT-DIPPED GALVANIZED DECKLOK BRACKET IN ACCORDANCE WITH ICC-ES REPORT ESR-2114.

FOR PRODUCT INQUIRIES  
CONTACT LIV BUILDING  
PRODUCTS AT  
905-852-3733

SCALE: NTS	
DATE: APRIL, 2014	
DRAWN SJB	CHECKED SJB

**QUAILE ENGINEERING LTD.**

38 Parkside Drive, UNIT 7  
Newmarket, ON  
L3Y 8J9  
T: 905-853-8547  
F: 905-853-7682  
E: quaile.eng@rogers.com

**ENGINEER'S SEAL****PROJECT:**

LIV BUILDING PRODUCTS  
RESIDENTIAL INVISIRAIL GUARD

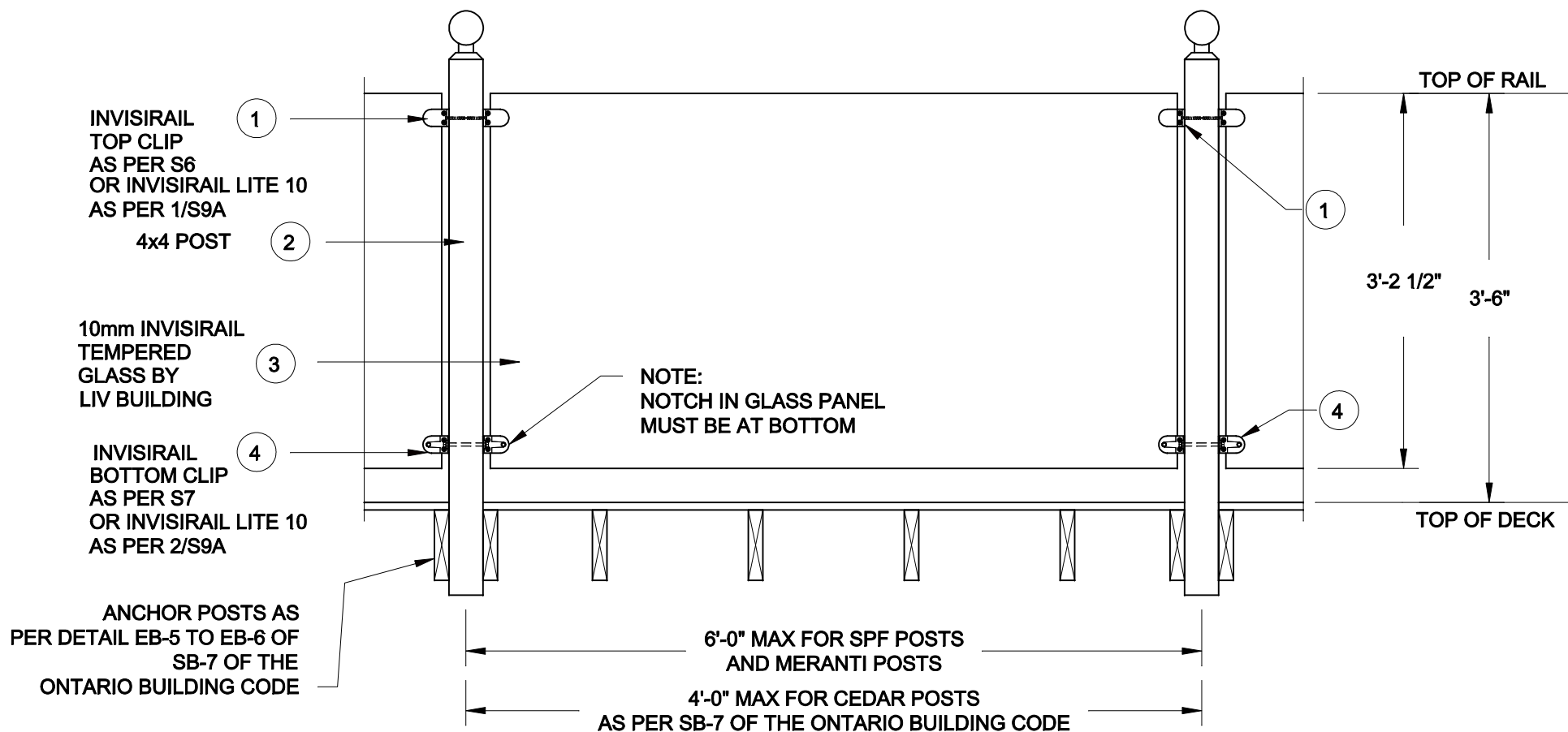
**GENERAL NOTES**

PROJECT No.:

14-079

DRAWING No.:

S1 R1



1 42" GUARD w/  
S2 4x4 POSTS

FOR PRODUCT INQUIRIES  
CONTACT LIV BUILDING  
PRODUCTS AT  
905-852-3733

SEE NOTES ON DRAWING S1

SCALE: 3/4" = 1'-0"	
DATE: APRIL, 2014	
DRAWN SJB	CHECKED SJB

## QUAILE ENGINEERING LTD.



38 Parkside Drive, UNIT 7  
Newmarket, ON  
L3Y 8J9  
T: 905-853-8547  
F: 905-853-7682  
E: quaile.eng@rogers.com

ENGINEER'S SEAL



PROJECT:

LIV BUILDING PRODUCTS  
RESIDENTIAL INVISIRAIL GUARD

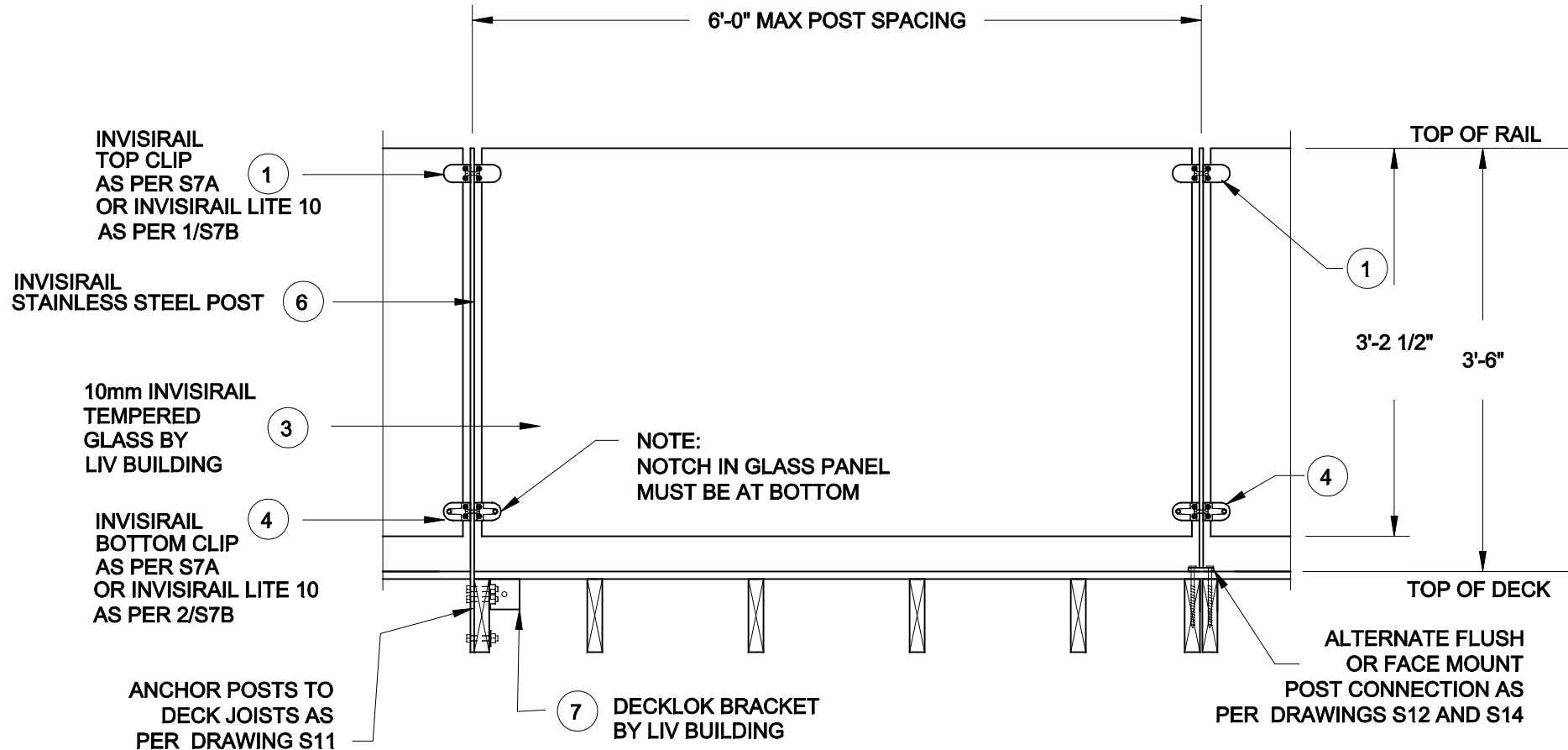
42" GUARD WITH 4x4 POSTS

PROJECT No.:

14-079

DRAWING No.:

S2 R1



1  
S2A 42" GUARD w/  
INVISIRAIL STEEL POSTS

FOR PRODUCT INQUIRIES  
CONTACT LIV BUILDING  
PRODUCTS AT  
905-852-3733

SEE NOTES ON DRAWING S1

SCALE: 3/4" = 1'-0"	
DATE: APRIL, 2014	
DRAWN SJB	CHECKED SJB

**QUAILE ENGINEERING LTD.**



38 Parkside Drive, UNIT 7  
Newmarket, ON  
L3Y 8J9  
T: 905-853-8547  
F: 905-853-7682  
E: quaille.eng@rogers.com

ENGINEER'S SEAL



APR 28, 2016

PROJECT:

LIV BUILDING PRODUCTS  
RESIDENTIAL INVISIRAIL GUARD

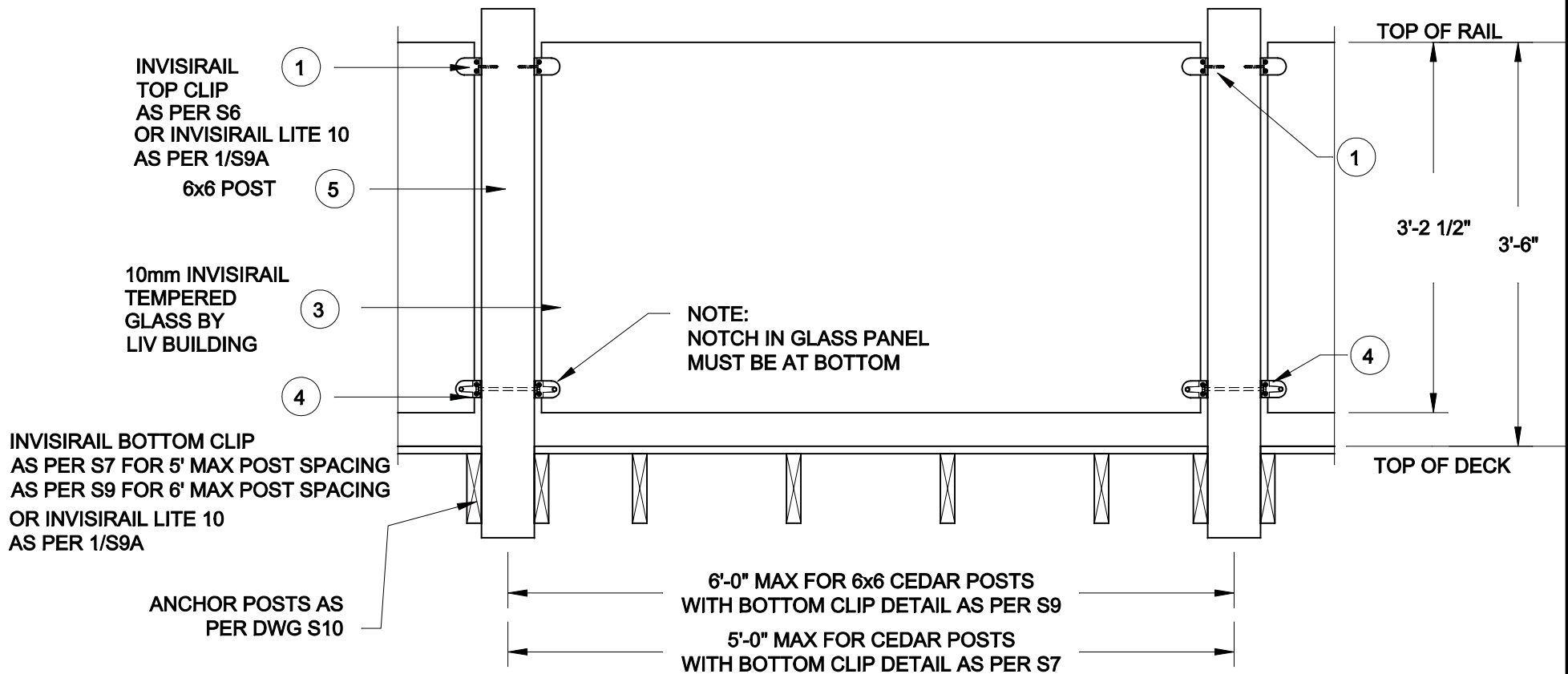
42" GUARD WITH  
INVISIRAIL STEEL POSTS

PROJECT No.:

14-079

DRAWING No.:

S2A R1



**1**  
**S3** 42" GUARD w/  
6x6 POSTS

FOR PRODUCT INQUIRIES  
CONTACT LIV BUILDING  
PRODUCTS AT  
905-852-3733

SEE NOTES ON DRAWING S1

SCALE: 3/4" = 1'-0"	
DATE: APRIL, 2014	
DRAWN SJB	CHECKED SJB

**QUAILE ENGINEERING LTD.**



38 Parkside Drive, UNIT 7  
Newmarket, ON  
L3Y 8J9  
T: 905-853-8547  
F: 905-853-7682  
E: quaile.eng@rogers.com

ENGINEER'S SEAL



APR 28, 2016

PROJECT:

LIV BUILDING PRODUCTS  
RESIDENTIAL INVISIRAIL GUARD

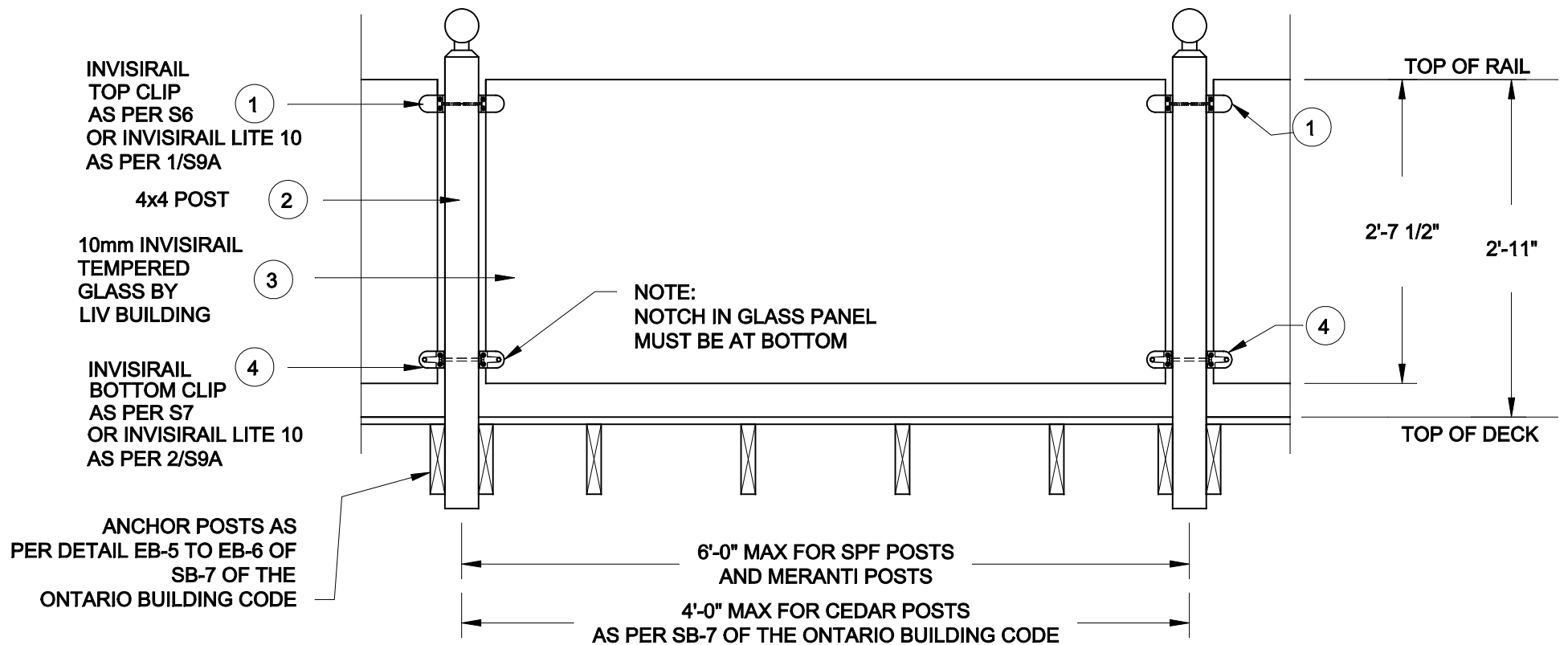
42" GUARD WITH 6x6 CEDAR  
POSTS

PROJECT No.:

14-079

DRAWING No.:

S3 R1



**1**  
**S4** 35" GUARD w/  
4x4 POSTS

**IMPORTANT NOTE:**  
THE 2'-11" GUARD MAY ONLY BE  
USED FOR DECKS SERVING ONE  
DWELLING UNIT AND WHERE  
THE TOP OF THE DECK IS NOT  
MORE THAN 5'-11" ABOVE  
GROUND LEVEL.

FOR PRODUCT INQUIRIES  
CONTACT LIV BUILDING  
PRODUCTS AT  
905-852-3733

SEE NOTES ON DRAWING S1

SCALE: 3/4" = 1'-0"	
DATE: APRIL, 2014	
DRAWN SJB	CHECKED SJB

## QUAILE ENGINEERING LTD.



38 Parkside Drive, UNIT 7  
Newmarket, ON  
L3Y 8J9  
T: 905-853-8547  
F: 905-853-7682  
E: quaile.eng@rogers.com

ENGINEER'S SEAL



APR 28, 2016

PROJECT:

LIV BUILDING PRODUCTS  
RESIDENTIAL INVISIRAIL GUARD

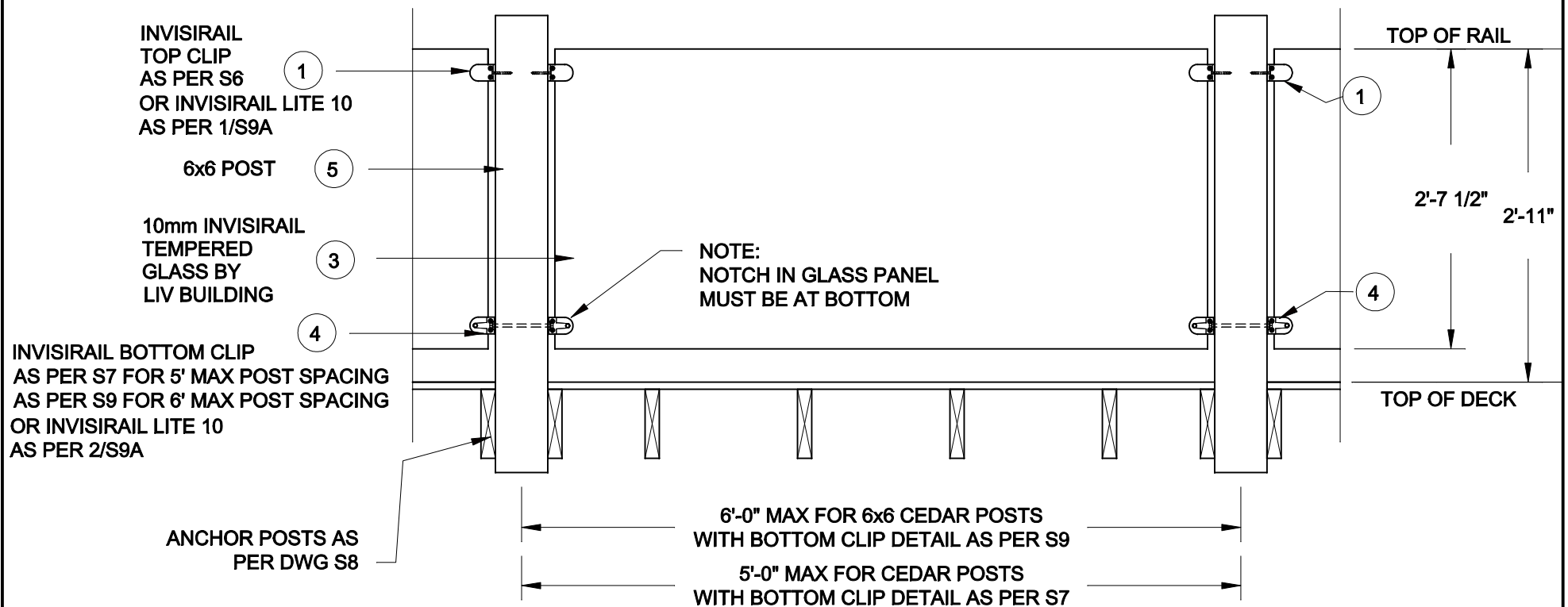
35" GUARD WITH 4x4 POSTS

PROJECT No.:

14-079

DRAWING No.:

S4 R1



**IMPORTANT NOTE:**  
THE 2'-11" GUARD MAY ONLY BE  
USED FOR DECKS SERVING ONE  
DWELLING UNIT AND WHERE  
THE TOP OF THE DECK IS NOT  
MORE THAN 5'-11" ABOVE  
GROUND LEVEL.

FOR PRODUCT INQUIRIES  
CONTACT LIV BUILDING  
PRODUCTS AT  
905-852-3733

SEE NOTES ON DRAWING S1

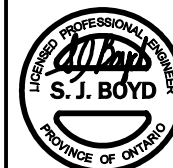
SCALE: 3/4" = 1'-0"	
DATE: APRIL, 2014	
DRAWN SJB	CHECKED SJB

## QUAILE ENGINEERING LTD.



38 Parkside Drive, UNIT 7  
Newmarket, ON  
L3Y 8J9  
T: 905-853-8547  
F: 905-853-7682  
E: quaile.eng@rogers.com

### ENGINEER'S SEAL



APR 28, 2016

### PROJECT:

LIV BUILDING PRODUCTS  
RESIDENTIAL INVISIRAIL GUARD

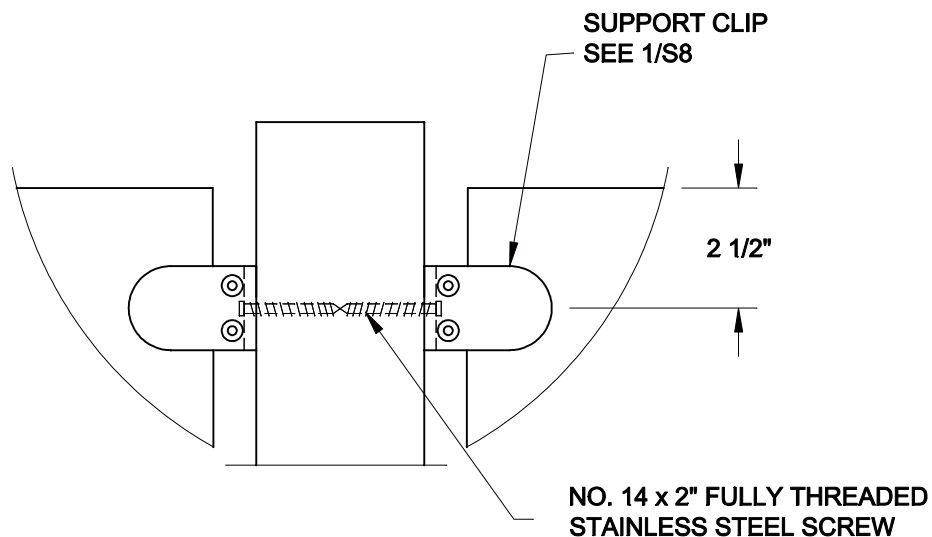
35" GUARD WITH 6x6 CEDAR  
POSTS

PROJECT No.:

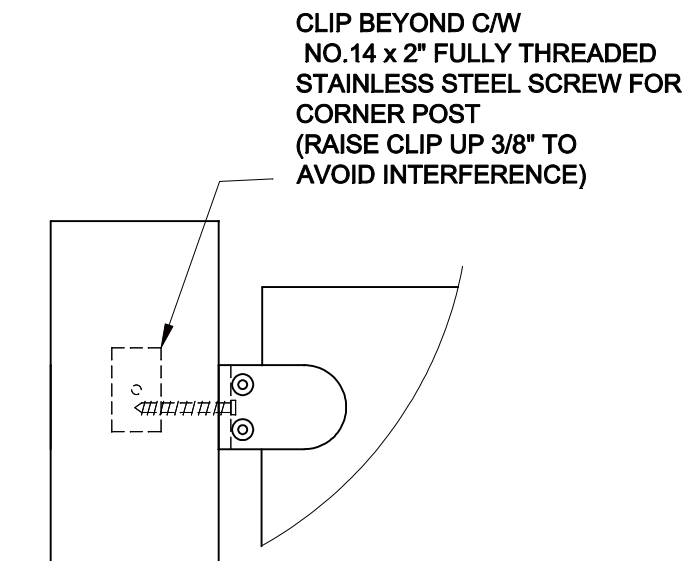
14-079

DRAWING No.:

S5 R1



**1**  
**S6** TOP CLIP - INTERMEDIATE POST



**2**  
**S6** TOP CLIP - END / CORNER POST

FOR PRODUCT INQUIRIES  
CONTACT LIV BUILDING  
PRODUCTS AT  
905-852-3733

SEE NOTES ON DRAWING S1

SCALE: 3" = 1'-0"	
DATE: APRIL, 2014	
DRAWN SJB	CHECKED SJB

## QUAILE ENGINEERING LTD.



38 Parkside Drive, UNIT 7  
Newmarket, ON  
L3Y 8J9  
T: 905-853-8547  
F: 905-853-7682  
E: quaile.eng@rogers.com

### ENGINEER'S SEAL



### PROJECT:

LIV BUILDING PRODUCTS  
RESIDENTIAL INVISIRAIL GUARD

INVISIRAIL TOP CLIP DETAILS

PROJECT No.:

14-079

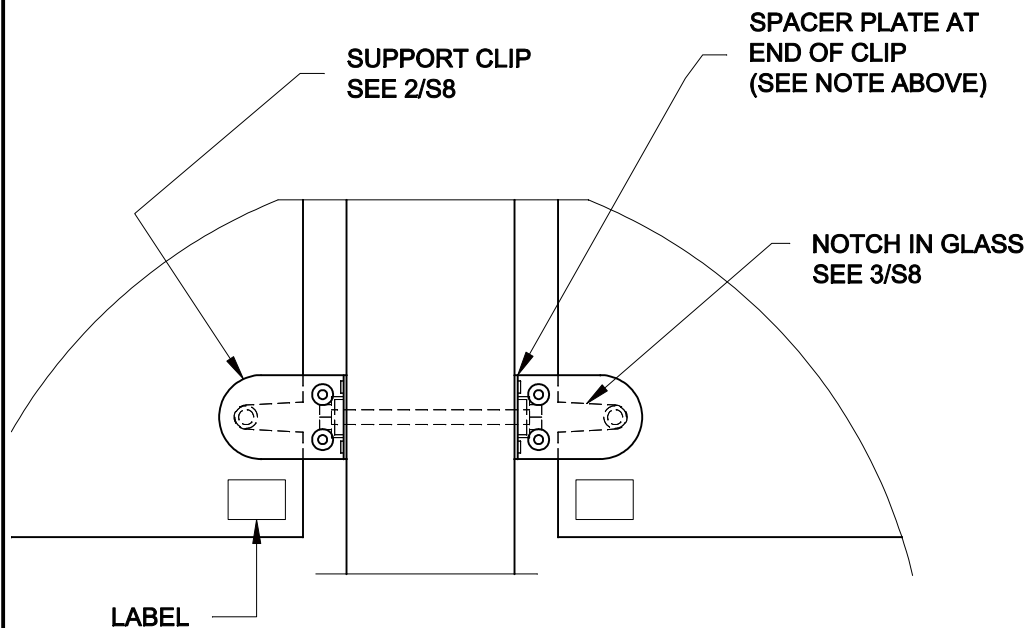
DRAWING No.:

S6

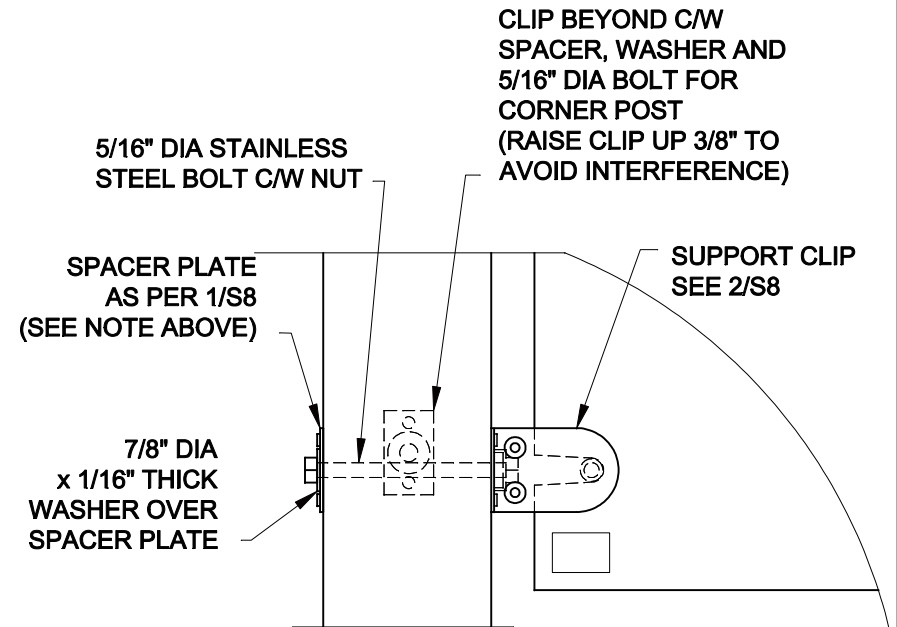
**NOTE:**

SPACER PLATES MAY BE OMITTED FOR THE FOLLOWING:

- SPF AND CEDAR POSTS SPACED UP TO 4'-0" O/C
- MERANTI POSTS SPACED UP TO 6'-0" O/C



**1**  
**S7** **BOTTOM CLIP - INTERMEDIATE POST**



**2**  
**S7** **BOTTOM CLIP - END / CORNER POST**

FOR PRODUCT INQUIRIES  
CONTACT LIV BUILDING  
PRODUCTS AT  
905-852-3733

SEE NOTES ON DRAWING S1

SCALE: 3" = 1'-0"	
DATE: APRIL, 2014	
DRAWN SJB	CHECKED SJB

**QUAILE ENGINEERING LTD.**



38 Parkside Drive, UNIT 7  
Newmarket, ON  
L3Y 8J9  
T: 905-853-8547  
F: 905-853-7682  
E: quaile.eng@rogers.com

**ENGINEER'S SEAL**



APR 28, 2016

**PROJECT:**

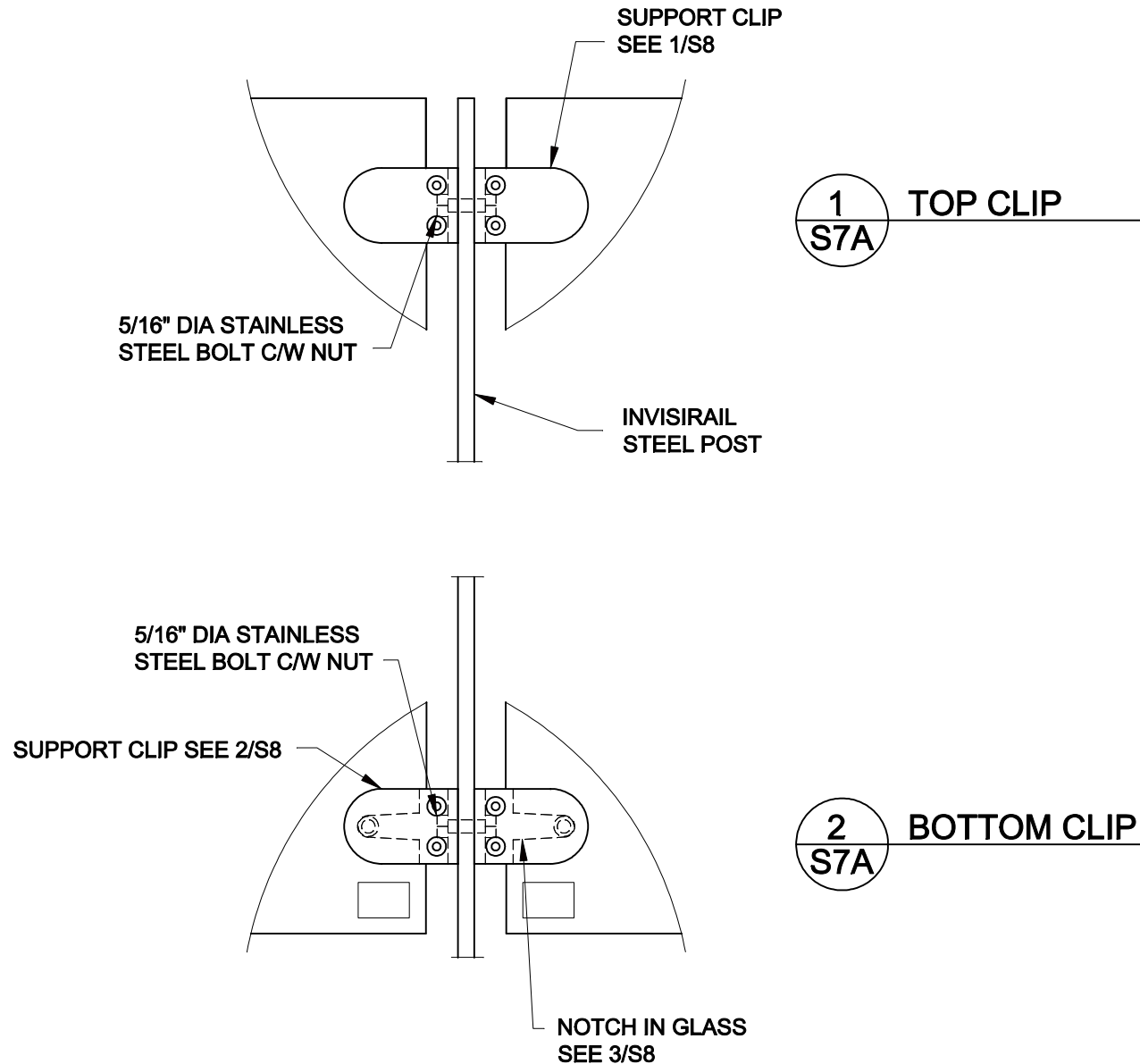
LIV BUILDING PRODUCTS  
RESIDENTIAL INVISIRAIL GUARD

INVISIRAIL BOTTOM CLIP DETAILS

PROJECT No.:  
14-079

DRAWING No.:  
S7





FOR PRODUCT INQUIRIES  
CONTACT LIV BUILDING  
PRODUCTS AT  
905-852-3733

SEE NOTES ON DRAWING S1

SCALE:

3" = 1'-0"

DATE:

APRIL, 2014

DRAWN

SJB

CHECKED

SJB

**QUAILE ENGINEERING LTD.**



38 Parkside Drive, UNIT 7  
Newmarket, ON  
L3Y 8J9

T: 905-853-8547  
F: 905-853-7682

E: quaile.eng@rogers.com

ENGINEER'S SEAL



APR 28, 2016

PROJECT:

LIV BUILDING PRODUCTS  
RESIDENTIAL INVISIRAIL GUARD

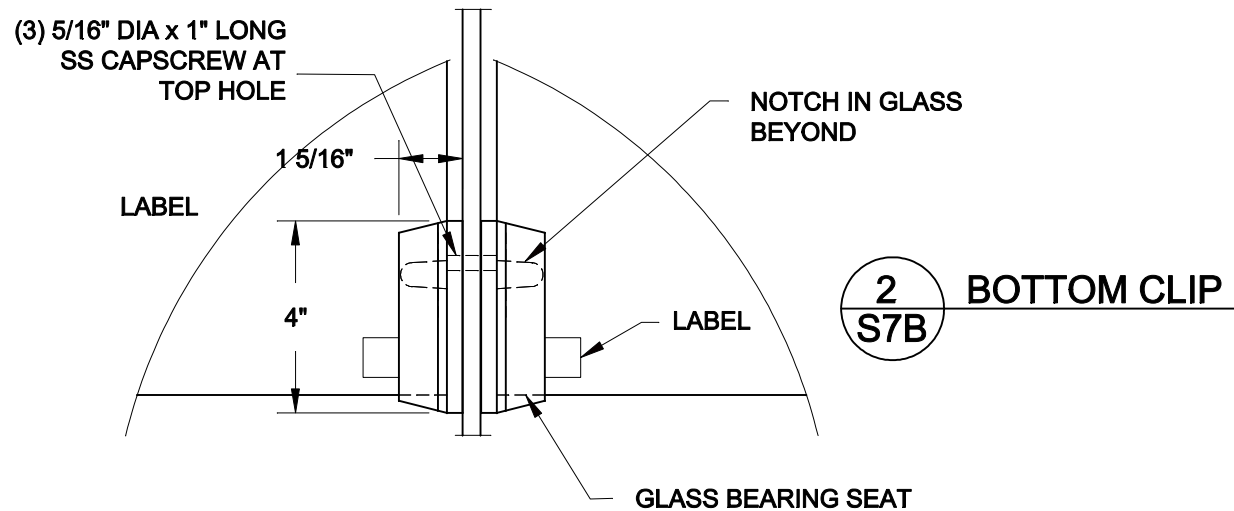
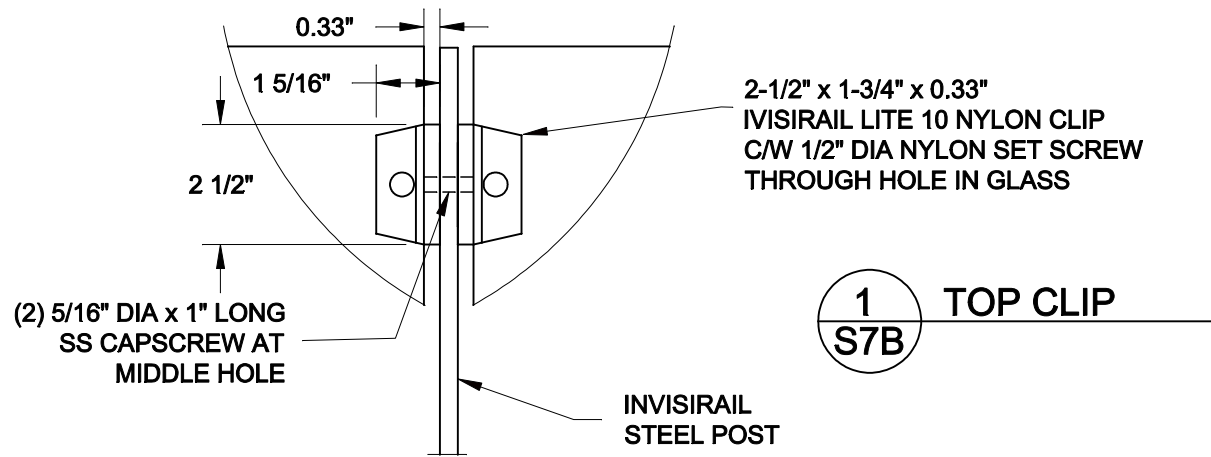
INVISIRAIL POST CLIP DETAILS

PROJECT No.:

14-079

DRAWING No.:

S7 A



FOR PRODUCT INQUIRIES  
CONTACT LIV BUILDING  
PRODUCTS AT  
905-852-3733

SEE NOTES ON DRAWING S1

SCALE:

3" = 1'-0"

DATE:

APRIL, 2014

DRAWN

SJB

CHECKED

SJB

**QUAILE ENGINEERING LTD.**



38 Parkside Drive, UNIT 7  
Newmarket, ON  
L3Y 8J9

T: 905-853-8547  
F: 905-853-7682

E: quaile.eng@rogers.com

ENGINEER'S SEAL



APR 28, 2016

PROJECT:

LIV BUILDING PRODUCTS  
RESIDENTIAL INVISIRAIL GUARD

INVISIRAIL LITE 10  
POST CLIP DETAILS

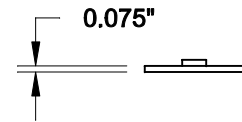
PROJECT No.:

14-079

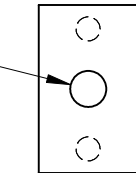
DRAWING No.:

S7 B

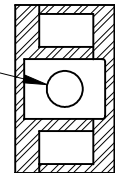
NOTE: ALL STEEL TO BE STAINLESS STEEL



Ø3/8"



Ø3/8"

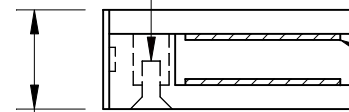


SPACER PLATE

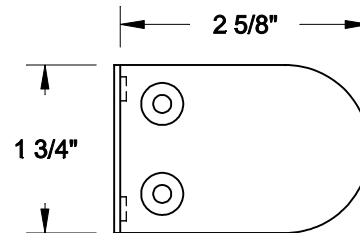
END VIEW OF CLIP

1 1/16"

0.21" DIA x 3/4" LONG  
MACHINE SCREW  
(2 PER CLIP)



RUBBER PADS



SPACER PLATE WHERE SPECIFIED

1  
S8

TOP CLIP

1 3/16"

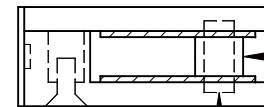
R0"

2 1/2"

LABEL

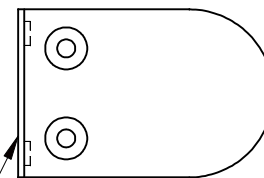
3  
S8

GLASS NOTCH DETAIL (BOTTOM ONLY)



NYLON SLEEVE

5/16" DIA x  
3/4" LONG PIN



SPACER PLATE  
SEE 1/S6

2  
S8

BOTTOM CLIP

NOTE: BOTTOM CLIP IS THE SAME AS THE  
TOP CLIP EXCEPT FOR PIN AND SLEEVE  
AS SHOWN

FOR PRODUCT INQUIRIES  
CONTACT LIV BUILDING  
PRODUCTS AT  
905-852-3733

SEE NOTES ON DRAWING S1

SCALE:  
1" = 2"

DATE:  
APRIL, 2014

DRAWN  
SJB

CHECKED  
SJB

**QUAILE ENGINEERING LTD.**



38 Parkside Drive, UNIT 7  
Newmarket, ON  
L3Y 8J9  
T: 905-853-8547  
F: 905-853-7682  
E: quaile.eng@rogers.com

ENGINEER'S SEAL



APR 28, 2016

PROJECT:

LIV BUILDING PRODUCTS  
RESIDENTIAL INVISIRAIL GUARD

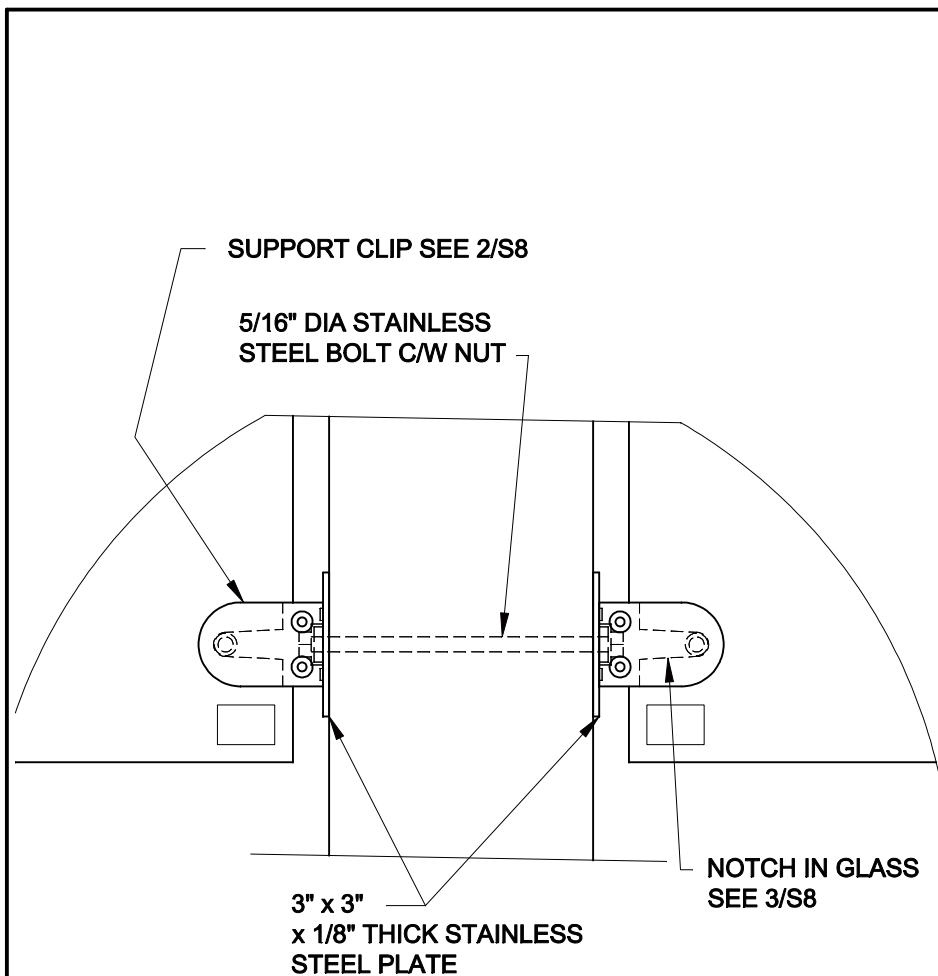
INVISIRAIL SUPPORT CLIP AND  
GLASS NOTCH DETAILS

PROJECT No.:

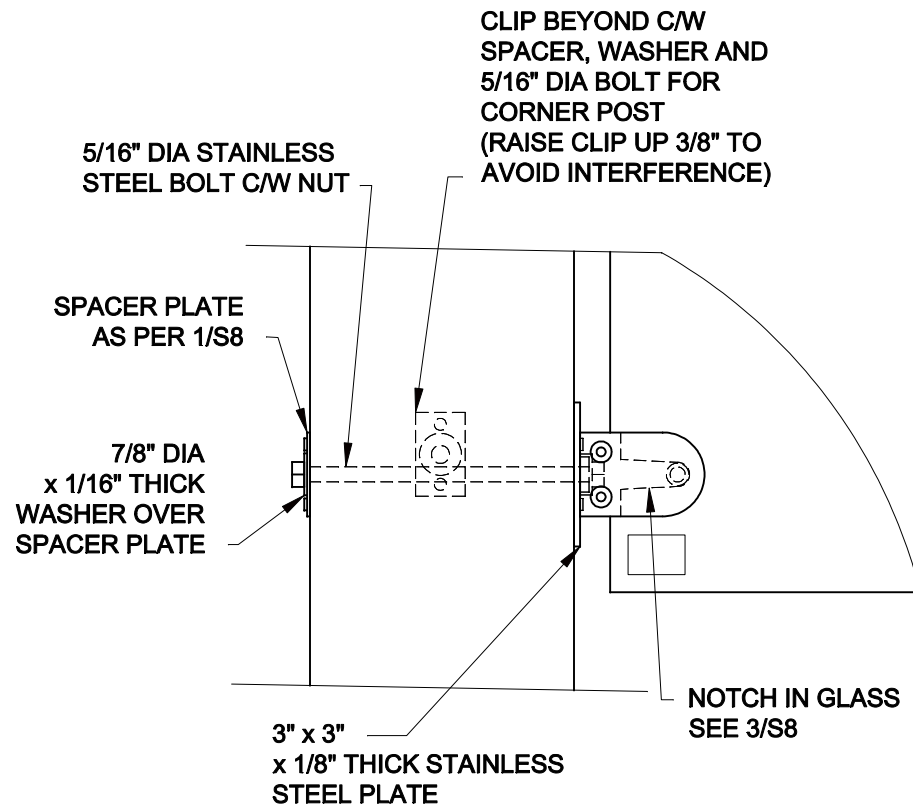
14-079

DRAWING No.:

S8



**1**  
**S9** **BOTTOM CLIP - INTERMEDIATE POST**



**2**  
**S9** **BOTTOM CLIP - CORNER POST**

FOR PRODUCT INQUIRIES  
CONTACT LIV BUILDING  
PRODUCTS AT  
905-852-3733

SEE NOTES ON DRAWING S1

SCALE:  
3" = 1'-0"

DATE:  
APRIL, 2014

DRAWN	CHECKED
SJB	SJB

**QUAILE ENGINEERING LTD.**



38 Parkside Drive, UNIT 7  
Newmarket, ON  
L3Y 8J9  
T: 905-853-8547  
F: 905-853-7682  
E: quaile.eng@rogers.com

ENGINEER'S SEAL



APR 28, 2016

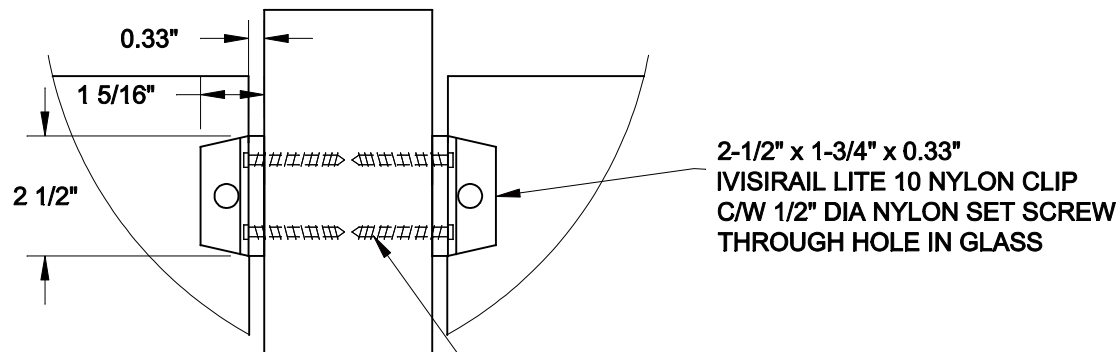
PROJECT:

LIV BUILDING PRODUCTS  
RESIDENTIAL INVISIRAIL GUARD

INVISIRAIL BOTTOM CLIP DETAILS  
FOR 6x6 CEDAR POSTS AT 6' O/C

PROJECT No.:  
14-079

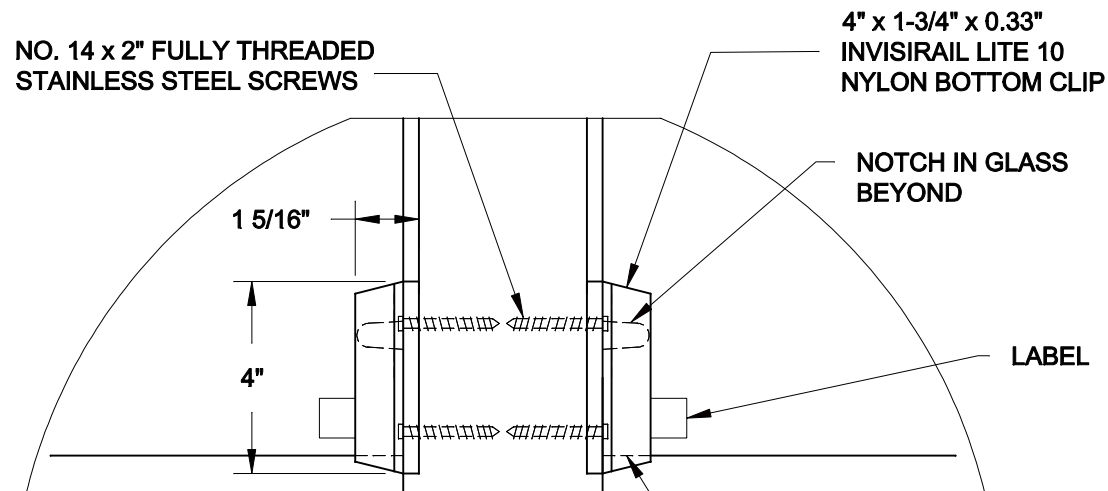
DRAWING No.:  
S9



1  
S9A

## TOP CLIP DETAIL

NO. 14 x 2" FULLY THREADED  
STAINLESS STEEL SCREW



2  
S9A

## BOTTOM CLIP DETAIL

GLASS BEARING SEAT

FOR PRODUCT INQUIRIES  
CONTACT LIV BUILDING  
PRODUCTS AT  
905-852-3733

SEE NOTES ON DRAWING S1

SCALE:  
3" = 1'-0"

DATE:  
APRIL, 2014

DRAWN	CHECKED
SJB	SJB

## QUAILE ENGINEERING LTD.



38 Parkside Drive, UNIT 7  
Newmarket, ON  
L3Y 8J9  
T: 905-853-8547  
F: 905-853-7682  
E: quaile.eng@rogers.com

ENGINEER'S SEAL



APR 28, 2016

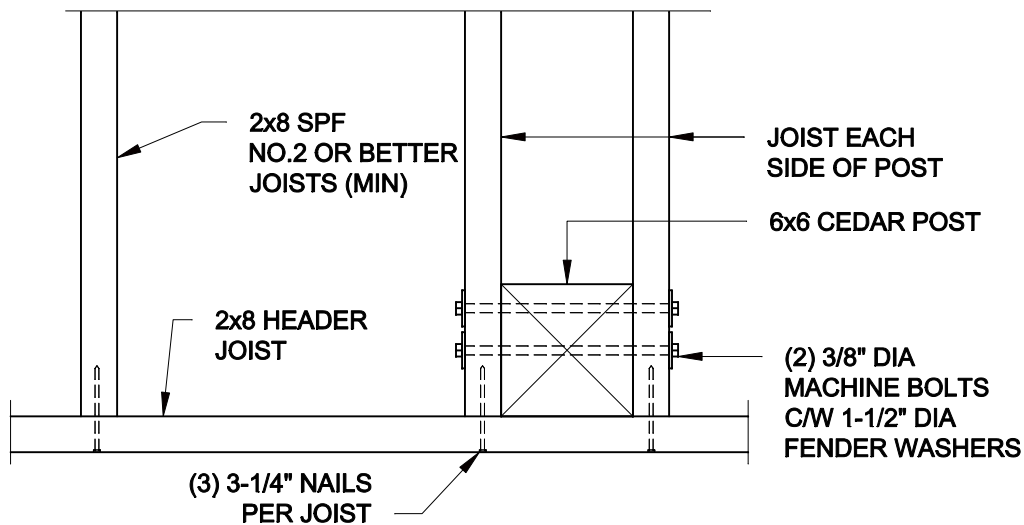
PROJECT:

LIV BUILDING PRODUCTS  
RESIDENTIAL INVISIRAIL GUARD

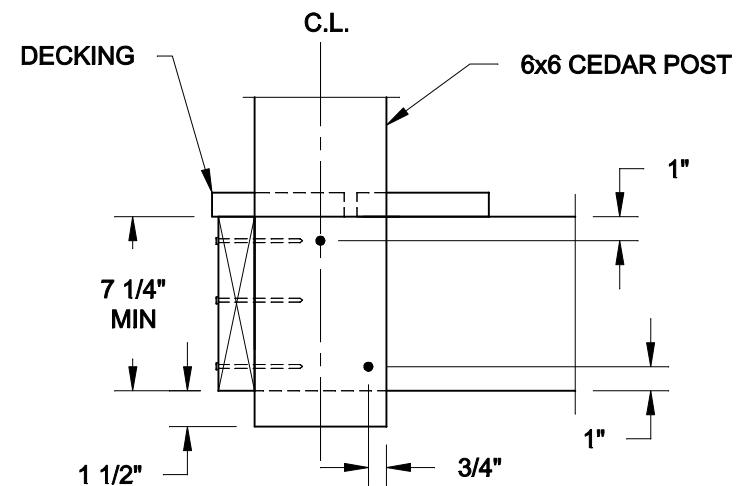
INVISIRAIL LITE 10  
CLIP DETAILS FOR WOOD POSTS

PROJECT No.:  
14-079

DRAWING No.:  
S9A



PLAN VIEW



SECTION

**1**  
**S10** **6x6 CEDAR POST TO JOIST CONNECTION**  
1-1/2" = 1'-0"

**NOTE:**

1. FASTENERS TO HAVE A CORROSION RESISTANT COATING AS PER SB-7 OF THE ONTARIO BUILDING CODE, OR SHALL BE STAINLESS STEEL.
2. THIS DETAIL IS ADAPTED FROM DETAIL EB-5 OF SB-7 OF THE ONTARIO BUILDING CODE AND EVALUATED FOR 6x6 CEDAR POSTS SPACED UP TO 6' O/C

FOR PRODUCT INQUIRIES  
CONTACT LIV BUILDING  
PRODUCTS AT  
905-852-3733

SEE NOTES ON DRAWING S1

SCALE:  
AS NOTED

DATE:  
APRIL, 2014

DRAWN SJB	CHECKED SJB
--------------	----------------

**QUAILE ENGINEERING LTD.**



38 Parkside Drive, UNIT 7  
Newmarket, ON  
L3Y 8J9  
T: 905-853-8547  
F: 905-853-7682  
E: quaille.eng@rogers.com

ENGINEER'S SEAL



APR 28, 2016

PROJECT:

LIV BUILDING PRODUCTS  
RESIDENTIAL INVISIRAIL GUARD

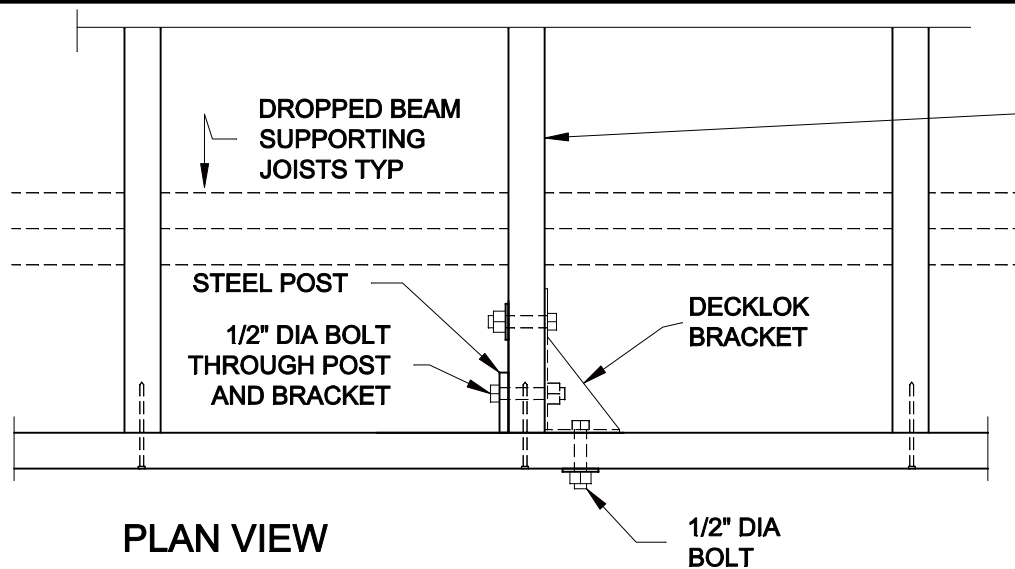
6x6 POST ANCHORAGE DETAIL

PROJECT No.:

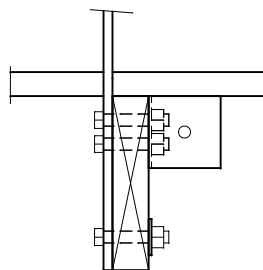
14-079

DRAWING No.:

S10



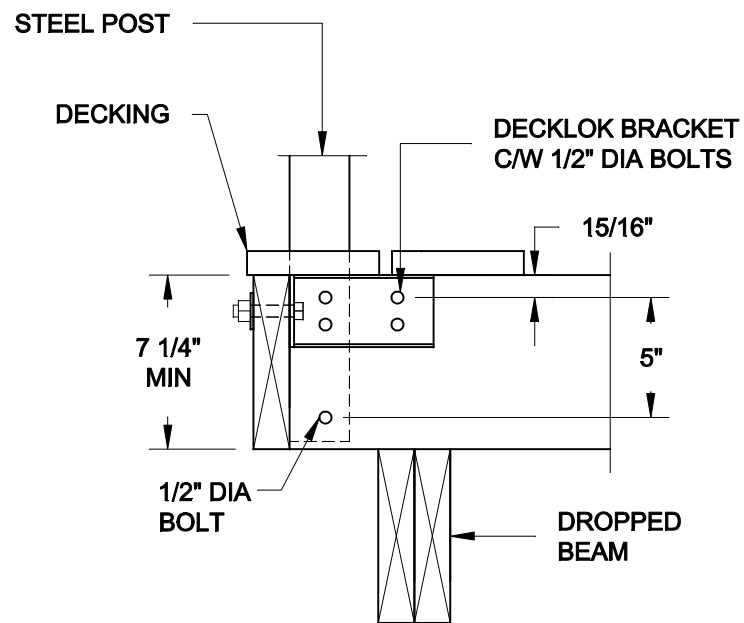
PLAN VIEW



ELEVATION

2x8 NO.2 SPF JOISTS MIN

NOTE:  
FASTEN STEEL POST TO 2X8 BLOCKING WHERE THE  
GUARD IS PARALLEL TO THE FLOOR JOISTS. FASTEN  
BLOCKING TO ADJACENT FLOOR JOIST WITH 3 3-1/2"  
END-NAILS AS PER DETAIL EB6 OF SB-7  
OF THE ONTARIO BUILDING CODE.



SECTION

**1**  
**S11** **INVISIRAIL STEEL POST TO JOIST CONNECTION**  
1-1/2" = 1'-0"

NOTE: BOLTS TO BE STAINLESS STEEL.

FOR PRODUCT INQUIRIES  
CONTACT LIV BUILDING  
PRODUCTS AT  
905-852-3733

SEE NOTES ON DRAWING S1

SCALE:  
AS NOTED

DATE:  
APRIL, 2014

DRAWN SJB	CHECKED SJB
--------------	----------------

**QUAILE ENGINEERING LTD.**



38 Parkside Drive, UNIT 7  
Newmarket, ON  
L3Y 8J9  
T: 905-853-8547  
F: 905-853-7682  
E: quaile.eng@rogers.com

ENGINEER'S SEAL



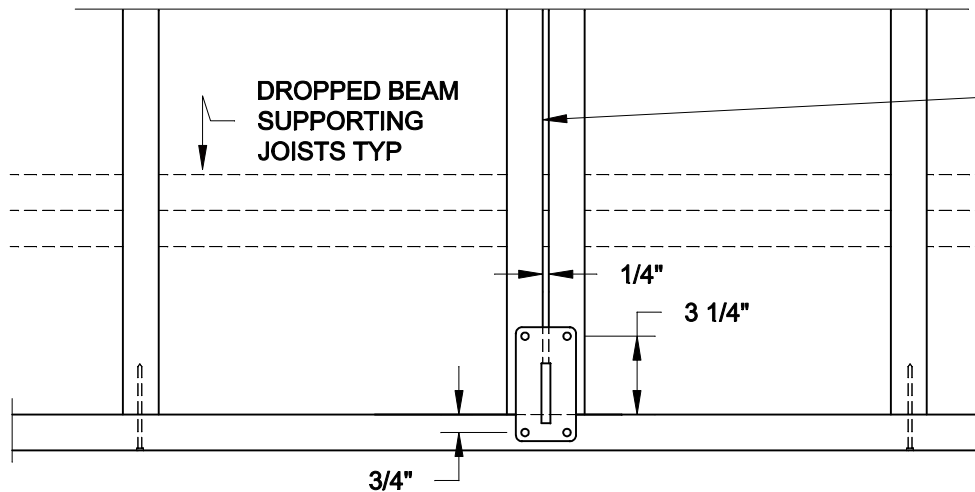
PROJECT:

LIV BUILDING PRODUCTS  
RESIDENTIAL INVISIRAIL GUARD

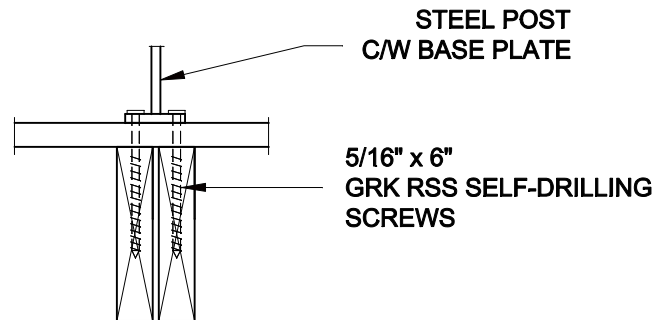
INVISIRAIL STEEL POST TO JOIST  
CONNECTION DETAIL

PROJECT No.:  
14-079

DRAWING No.:  
S11



PLAN VIEW

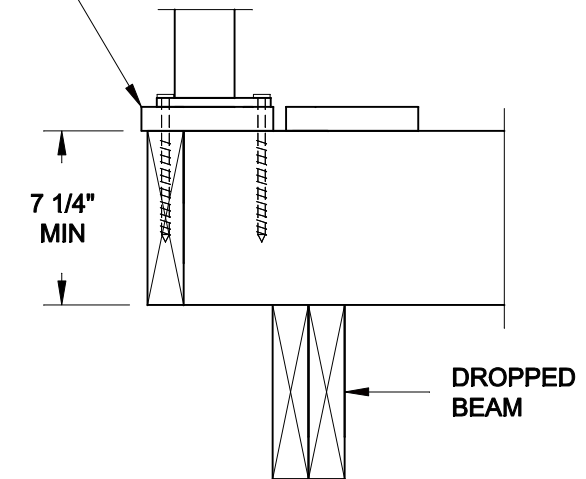


ELEVATION

DOUBLE 2x8 NO.2 SPF JOIST MIN

NOTE:  
FASTEN STEEL POST TO 2X8 BLOCKING WHERE THE GUARD IS PARALLEL TO THE FLOOR JOISTS. FASTEN BLOCKING TO ADJACENT FLOOR JOIST WITH 3 3-1/2\"/>

5/4 KAYU DECK, 1\"/>



SECTION

1  
S12

## FLUSH MOUNT INVISIRAIL STEEL POST CONNECTION

1-1/2" = 1'-0"

NOTE: BASEPLATE MAY ONLY BEAR DIRECTLY ON SPECIFIED DECKING PRODUCTS- SEE SECTION.

FOR PRODUCT INQUIRIES  
CONTACT LIV BUILDING  
PRODUCTS AT  
905-852-3733

SEE NOTES ON DRAWING S1

SCALE:  
AS NOTED

DATE:  
APRIL, 2014

DRAWN SJB	CHECKED SJB
--------------	----------------

**QUAILE ENGINEERING LTD.**



38 Parkside Drive, UNIT 7  
Newmarket, ON  
L3Y 8J9  
T: 905-853-8547  
F: 905-853-7682  
E: quaile.eng@rogers.com

ENGINEER'S SEAL



APR 28, 2016

PROJECT:

LIV BUILDING PRODUCTS  
RESIDENTIAL INVISIRAIL GUARD

FLUSH MOUNT STEEL POST  
CONNECTION DETAIL

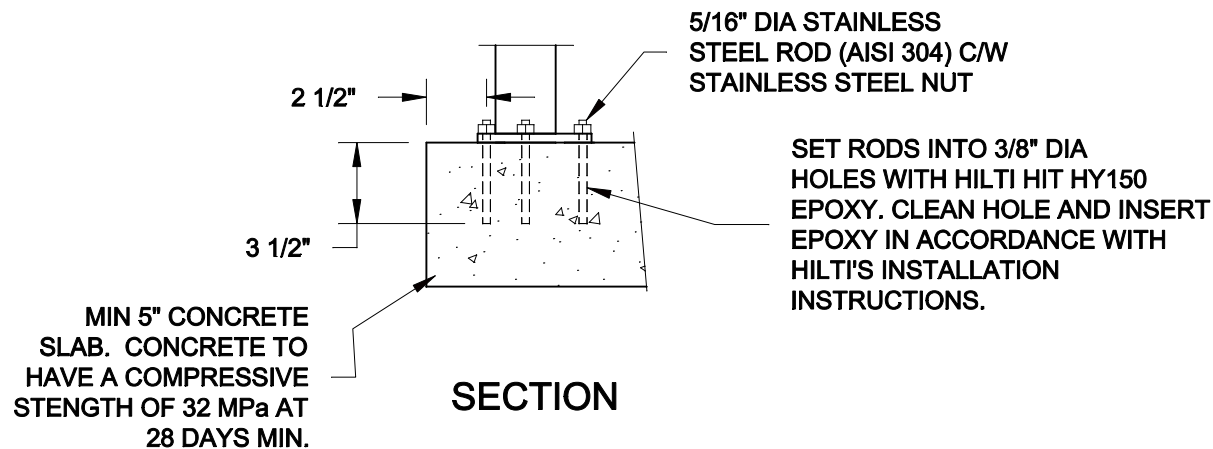
PROJECT No.:

14-079

DRAWING No.:

S12 R1





**1**  
**S12A** **FLUSH MOUNT INVISIRAIL STEEL POST CONNECTION - CONCRETE SLAB**  
1-1/2" = 1'-0"

FOR PRODUCT INQUIRIES  
CONTACT LIV BUILDING  
PRODUCTS AT  
905-852-3733

SEE NOTES ON DRAWING S1

SCALE: AS NOTED	
DATE: APRIL, 2014	
DRAWN SJB	CHECKED SJB

**QUAILE ENGINEERING LTD.**



38 Parkside Drive, UNIT 7  
Newmarket, ON  
L3Y 8J9  
T: 905-853-8547  
F: 905-853-7682  
E: quaile.eng@rogers.com

ENGINEER'S SEAL



APR 28, 2016

PROJECT:

LIV BUILDING PRODUCTS  
RESIDENTIAL INVISIRAIL GUARD

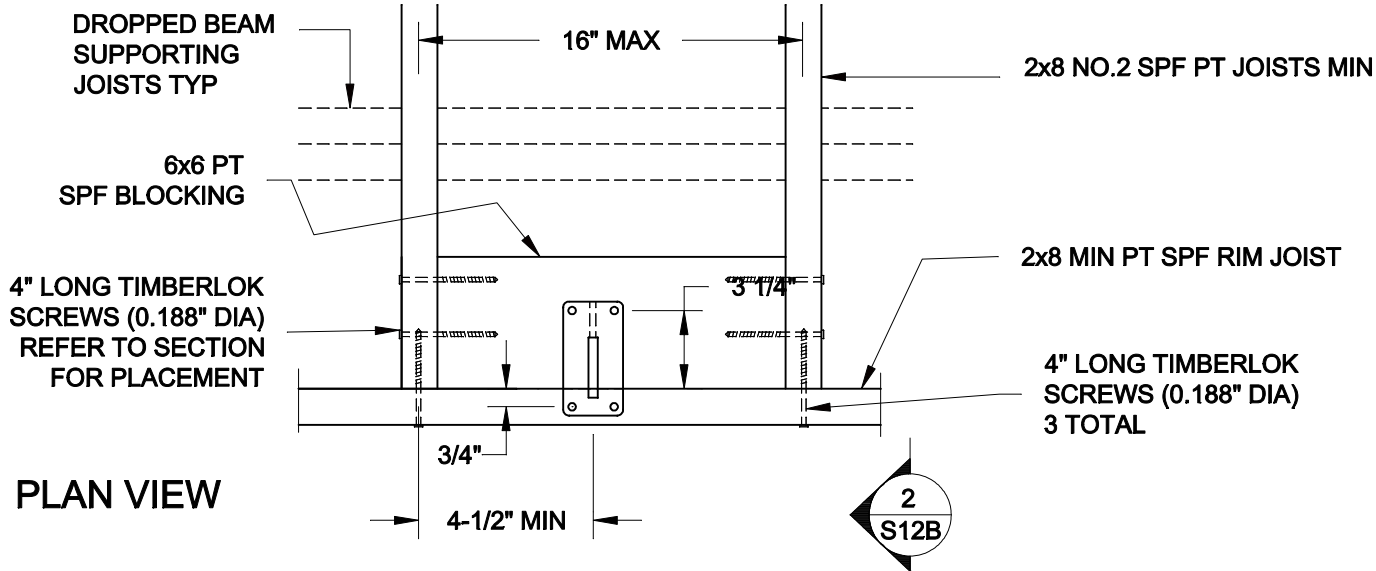
FLUSH MOUNT INVISIRAIL POST  
DETAIL FOR CONCRETE SLAB

PROJECT No.:

14-079

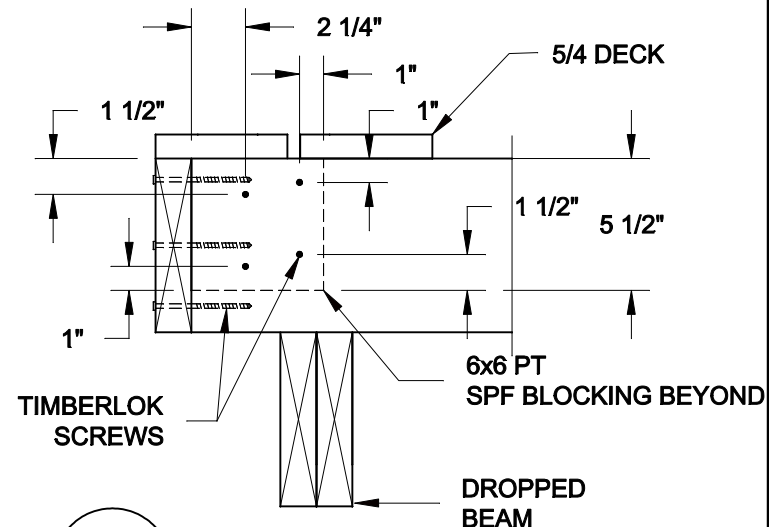
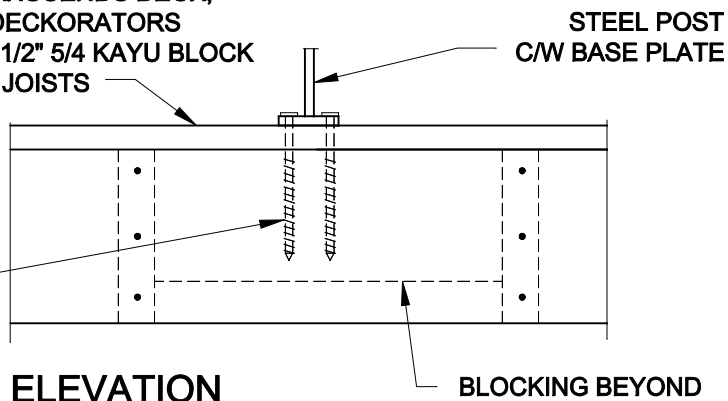
DRAWING No.:

S12A



5/4 KAYU DECK, 1" TREX TRANSCENDS DECK,  
1" GOSSEN PVC DECK, 7/8" DECKORATORS  
CLASSIC DECK, OR 1-1/2 x 5-1/2" 5/4 KAYU BLOCK  
BETWEEN BASE PLATE AND JOISTS

5/16" x 6"  
GRK RSS SELF-DRILLING  
SCREWS



# **1** **S12B** **ALT FLUSH MOUNT STEEL POST CONNECTION** 1-1/2" = 1'-0"

NOTE: BASEPLATE MAY ONLY BEAR DIRECTLY  
ON SPECIFIED DECKING PRODUCTS- SEE SECTION.

# **2** **S12B** **SECTION** 1-1/2" = 1'-0"

FOR PRODUCT INQUIRIES  
CONTACT LIV BUILDING  
PRODUCTS AT  
905-852-3733

SEE NOTES ON DRAWING S1

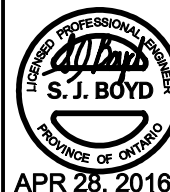
SCALE: AS NOTED	
DATE: APRIL, 2014	
DRAWN SJB	CHECKED SJB

**QUAILE ENGINEERING LTD.**



38 Parkside Drive, UNIT 7  
Newmarket, ON  
L3Y 8J9  
T: 905-853-8547  
F: 905-853-7682  
E: quaile.eng@rogers.com

ENGINEER'S SEAL



PROJECT:

LIV BUILDING PRODUCTS  
RESIDENTIAL INVISIRAIL GUARD

FLUSH MOUNT INVISIRAIL POST  
CONNECTION DETAIL

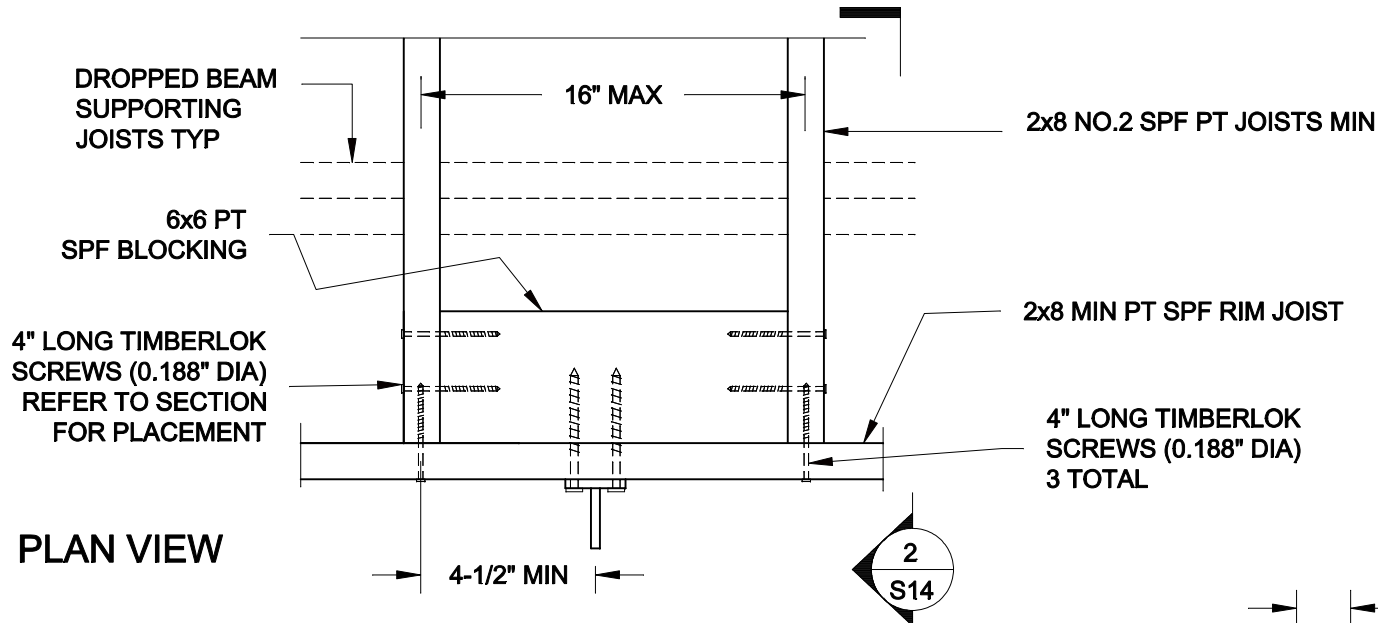
PROJECT No.:

14-079

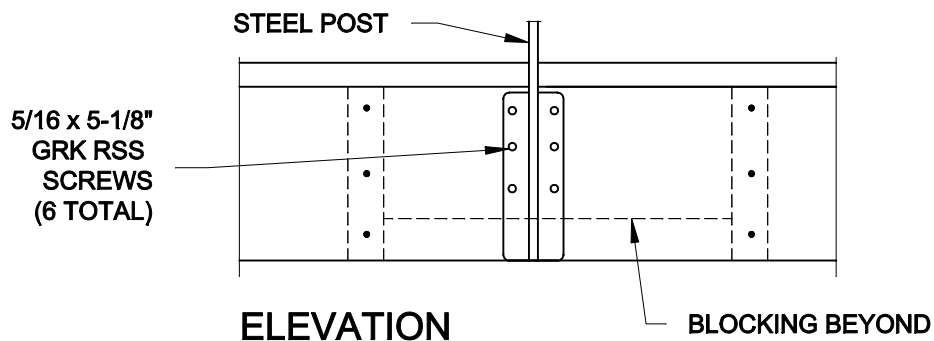
DRAWING No.:

S12B R1

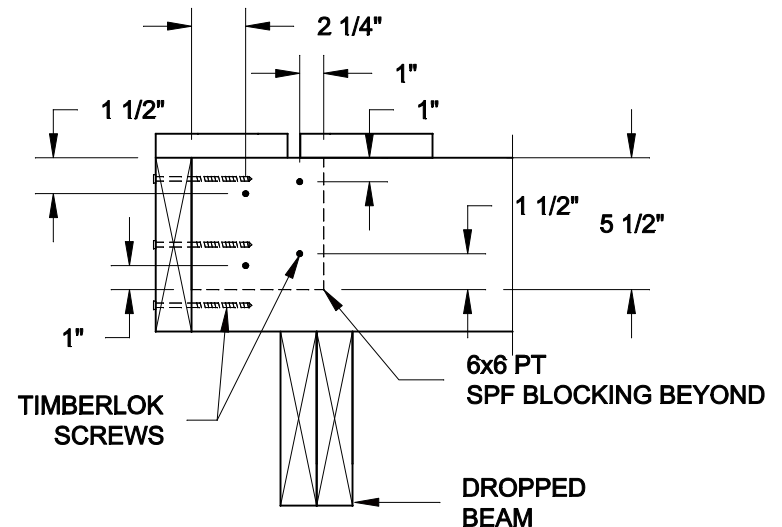




PLAN VIEW



ELEVATION



2  
S14  
SECTION  
1-1/2" = 1'-0"

1  
S14  
FACE MOUNT STEEL POST CONNECTION  
1-1/2" = 1'-0"

FOR PRODUCT INQUIRIES  
CONTACT LIV BUILDING  
PRODUCTS AT  
905-852-3733

SEE NOTES ON DRAWING S1

SCALE: AS NOTED	
DATE: APRIL, 2014	
DRAWN SJB	CHECKED SJB

## QUAILE ENGINEERING LTD.



38 Parkside Drive, UNIT 7  
Newmarket, ON  
L3Y 8J9  
T: 905-853-8547  
F: 905-853-7682  
E: quaile.eng@rogers.com

### ENGINEER'S SEAL



APR 28, 2016

### PROJECT:

LIV BUILDING PRODUCTS  
RESIDENTIAL INVISIRAIL GUARD

FLUSH MOUNT INVISIRAIL POST  
CONNECTION DETAIL

PROJECT No.:

14-079

DRAWING No.:

S14