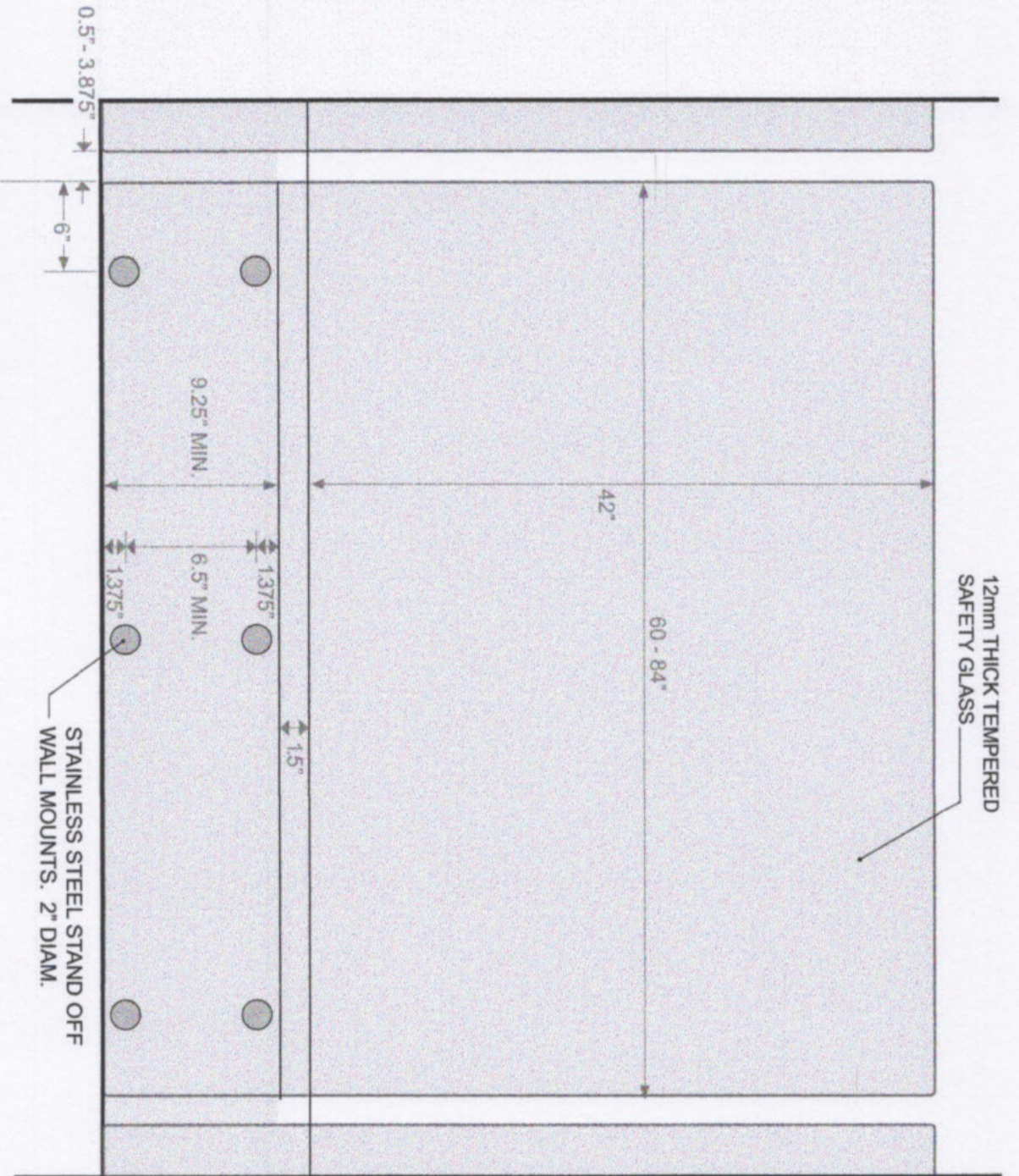


12mm THICK TEMPERED
SAFETY GLASS



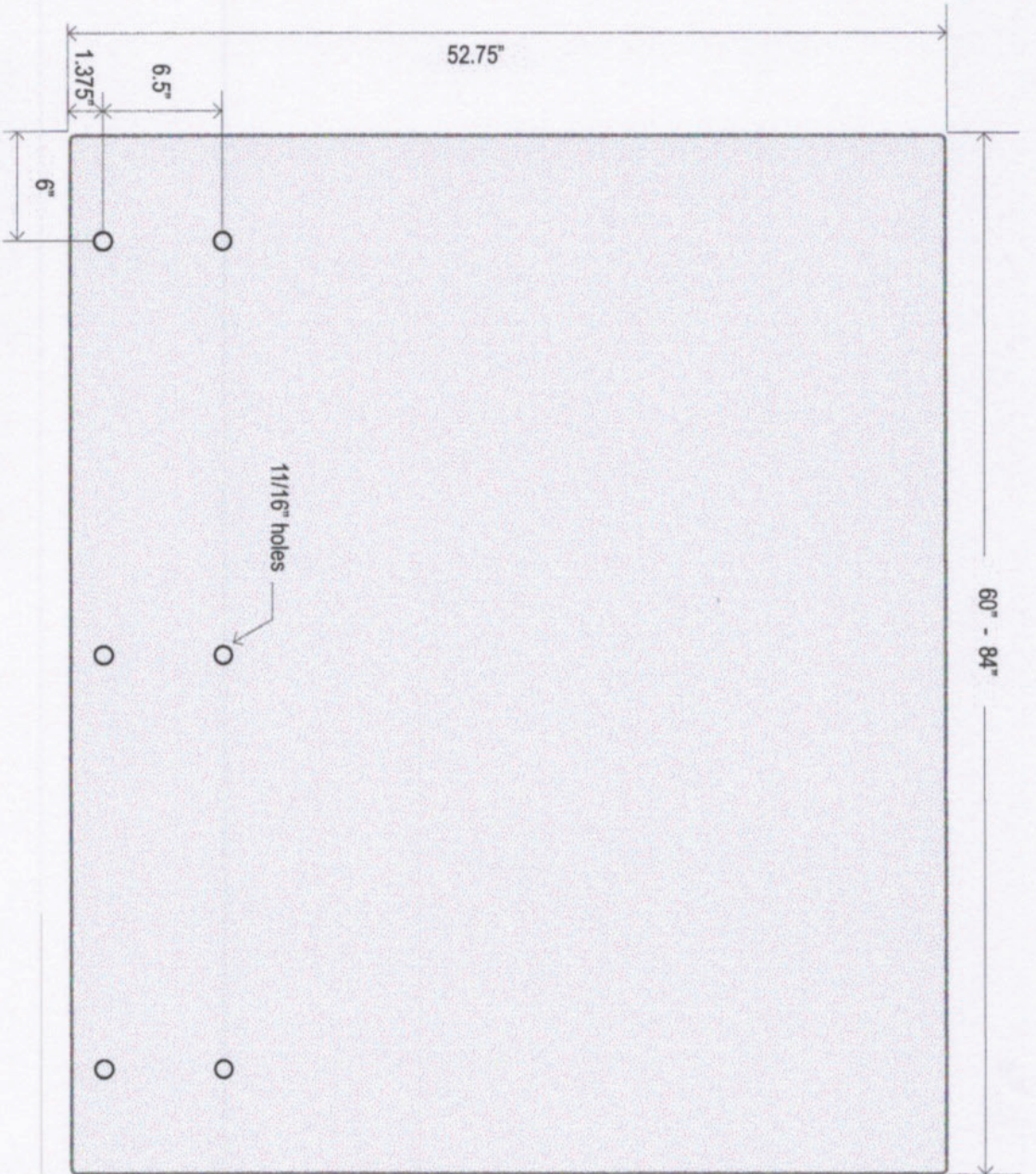
WALL MOUNT DETAIL

- NOTES:
- ALL INFILL PANELS TO BE 12MM TEMPERED GLASS IN ACCORDANCE WITH CAN/CGSB-12.1-M
 - ALL DESIGN LOADS COMPLIANT WITH OBC 4.1.5.14
 - SITE VERIFY ALL DIMENSIONS

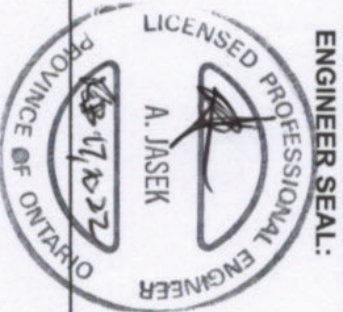
INVISIRAIL™
GLASS RAIL SYSTEM

ENGINEER SEAL:
A. JASEK
LICENSED PROFESSIONAL ENGINEER
PROVINCE OF ONTARIO

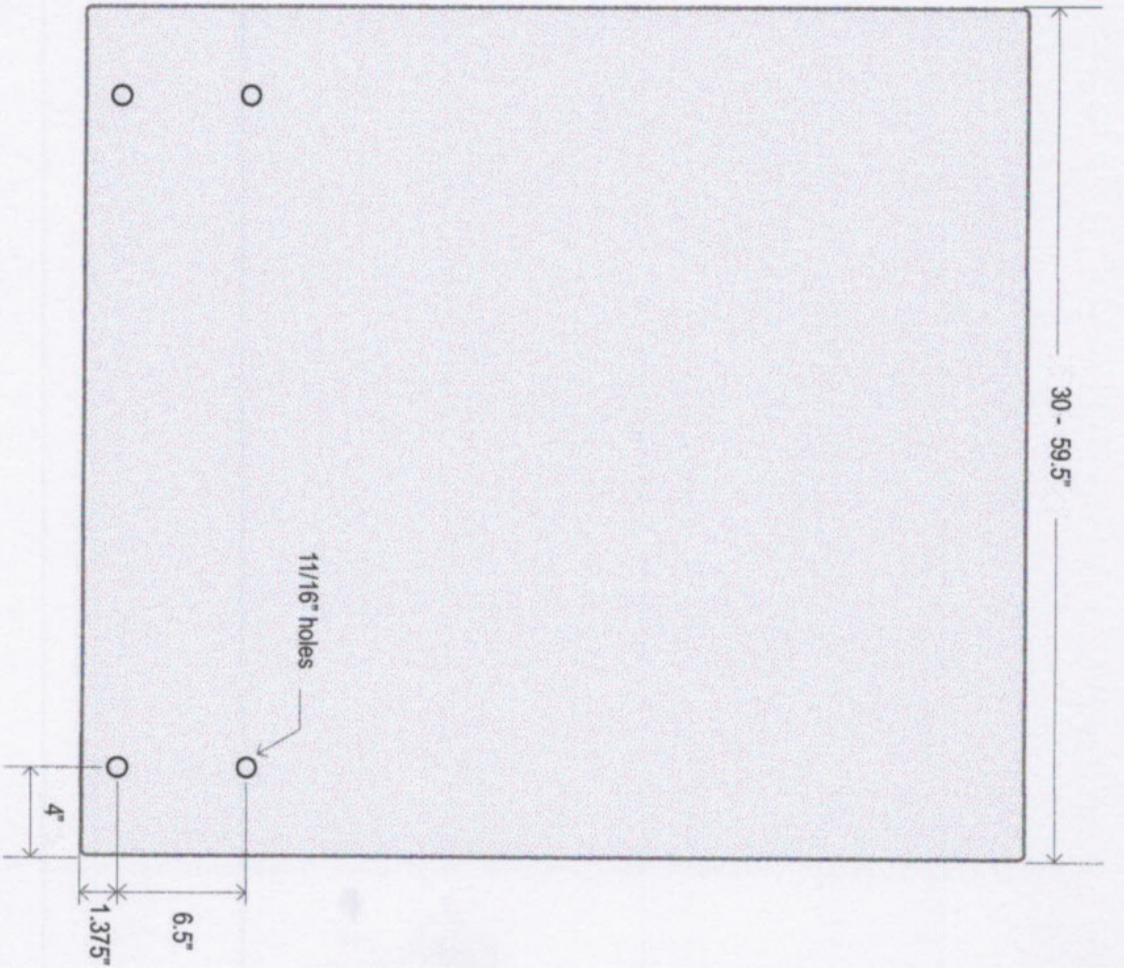
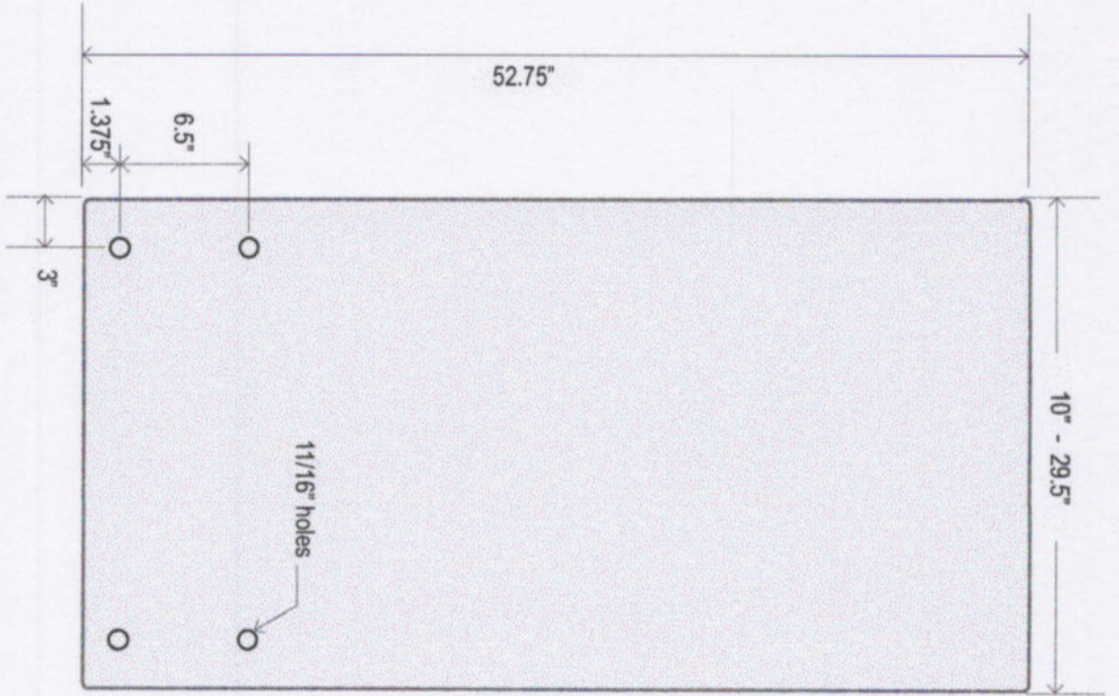
**12mm TEMPERED GLASS
POLISHED EDGES
SAFETY CORNERS**



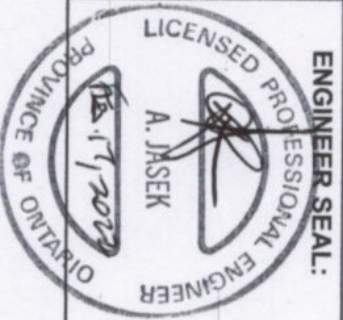
INVISIRAIL™
GLASS RAIL SYSTEM



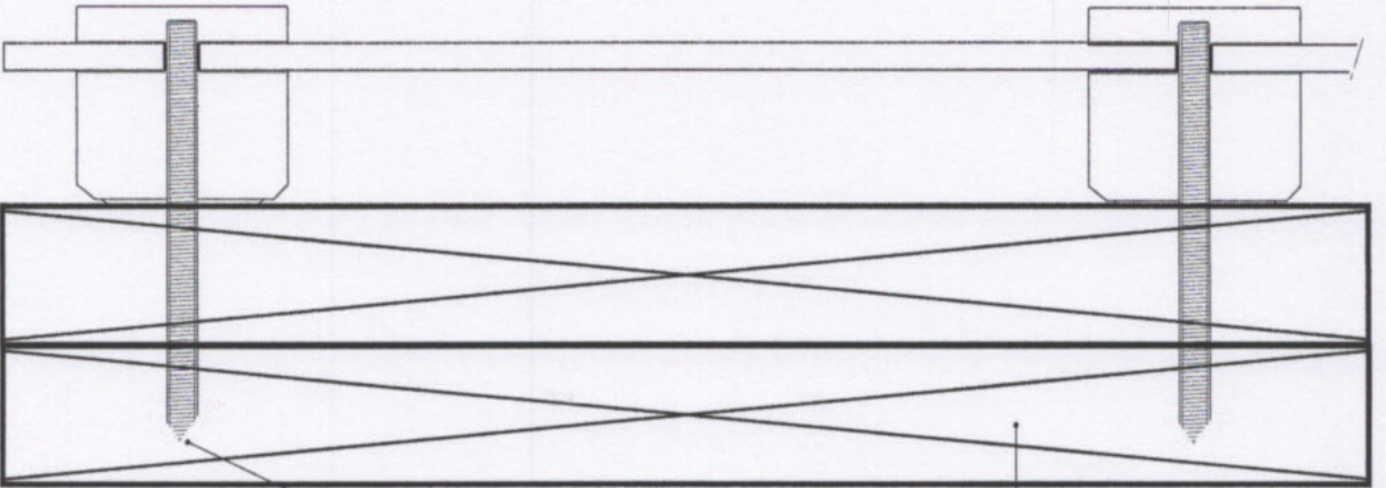
12mm TEMPERED GLASS
POLISHED EDGES
SAFETY CORNERS



INVISIRAIL™
GLASS RAIL SYSTEM



WOOD SURFACE CONNECTION



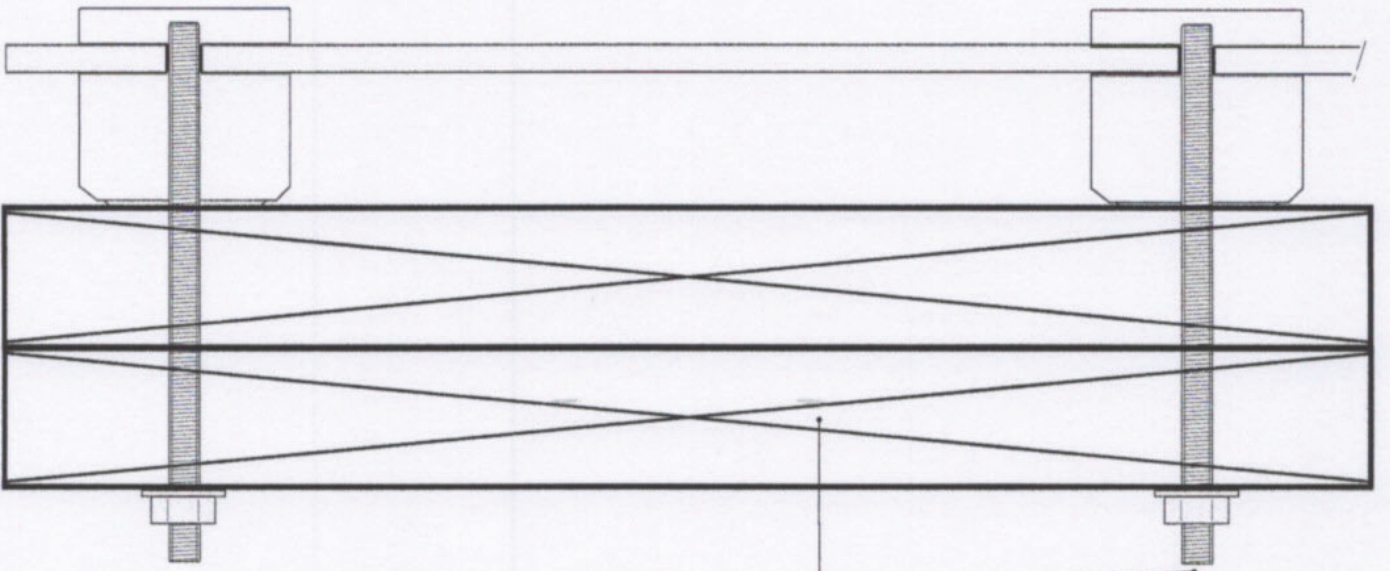
DOUBLE 2X10 PT
SPF RIM JOIST

15/32" DIA. STAINLESS STEEL LAG BOLT IMBEDDED 2.5" DEEP.
PRE-DRILL WITH 5/16" BIT

INVISIRAIL™
GLASS RAIL SYSTEM

ENGINEER SEAL:
LICENSED PROFESSIONAL ENGINEER
A. JASEK
PROVINCE OF ONTARIO
2012

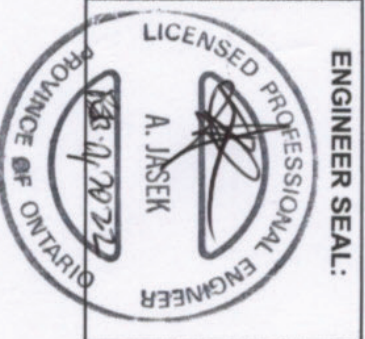
WOOD SURFACE CONNECTION



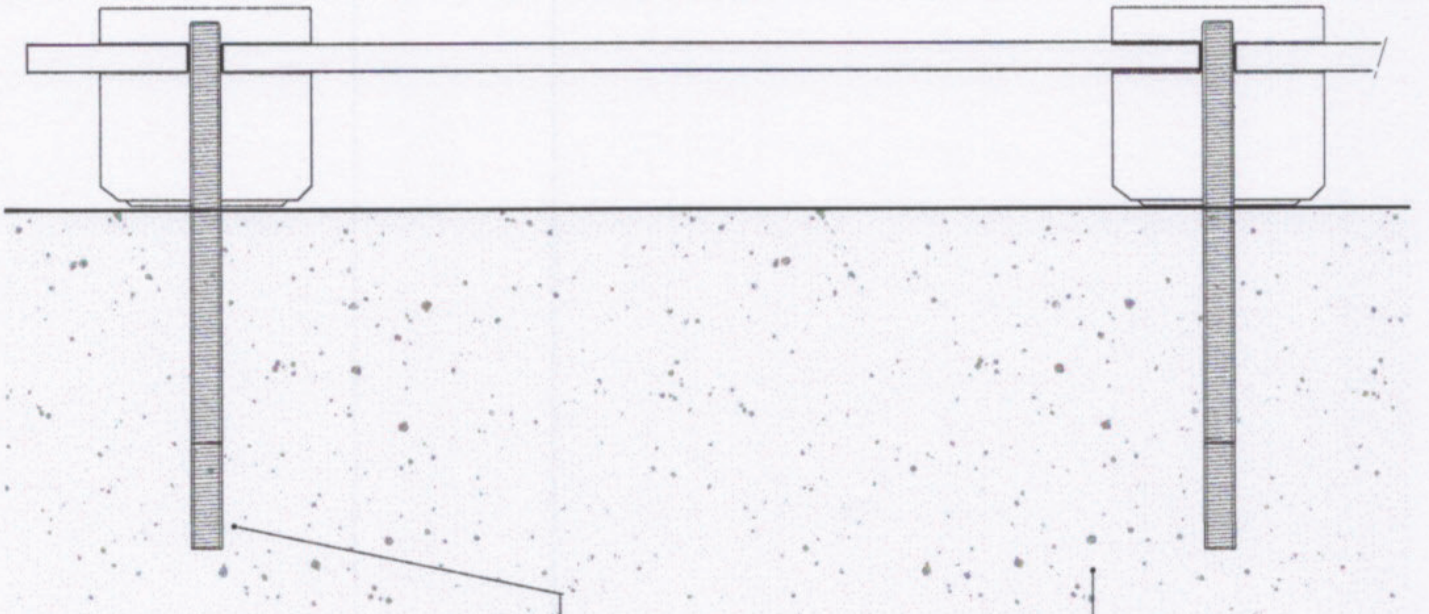
M12 SS THREADED ROD WITH SS WASHER AND SS NUT

DOUBLE 2X10 PT
SPF RIM JOIST

INVISIRAIL
GLASS RAIL SYSTEM



CONCRETE SURFACE CONNECTION



CONCRETE TO HAVE A COMPRESSIVE STRENGTH OF 25 MPa AT 28 DAYS MIN.

M12 STAINLESS STEEL THREADED ROD IMBEDDED 4" DEEP. SET RODS INTO 9/16" DIA. HOLES WITH EPOXY (HILTI HIT HY150). CLEAN HOLE AND INSERT EPOXY IN ACCORDANCE WITH HILTI INSTALLATION INSTRUCTIONS.

 <p>INVISIRAIL™ GLASS RAIL SYSTEM</p>	<p>ENGINEER SEAL:</p>  <p>LICENSED PROFESSIONAL ENGINEER A. JASEK PROVINCE OF ONTARIO</p>
--	--

STAND OFF CONNECTOR DETAIL

STAINLESS
STEEL
TYPE 316



2.5"

2.5"



ADJUSTABLE
RANGE
0" - 1"

1.1875"

ADJUSTABLE
RANGE
0.39" -

0.59" 0.4"



2" DIAM.

M12 X 2.5"
SS WOOD SCREW
OR
M12 (0.46875") THREADED ROD
BY DEFINED LENGTH

NOTE: ALL STEEL TO BE 316 TYPE STAINLESS STEEL

GLASS RAIL SYSTEM

INVISIRAIL™

ENGINEER SEAL:

LICENSED PROFESSIONAL ENGINEER
A. JASEK
171022
PROVINCE OF ONTARIO