

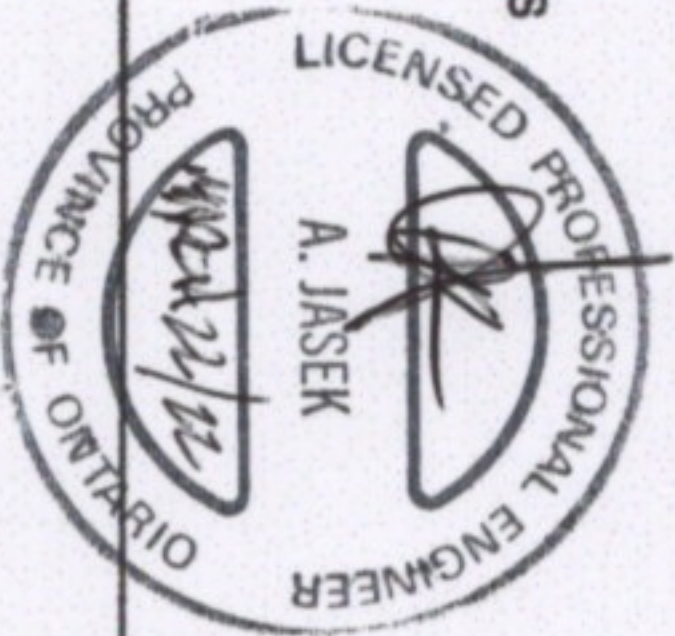
GENERAL NOTES:

1. DESIGN OF THE GUARD IS IN ACCORDANCE WITH SECTION 9.8.8.2 OF THE 2012 OBC AND 2010 NBCC, AND SB-7 OF THE ONTARIO BUILDING CODE.
2. GLASS PANELS CAN CARRY A 225 LB (1.0 KN) HORIZONTAL CONCENTRATED LOAD AT ANY POINT.
3. A UNIFORM VERTICAL LOAD OF 100 PLF (1.5 kN/m) HAS BEEN APPLIED TO THE TOP OF THE GUARD.
4. THE FOLLOWING HORIZONTAL LOADS HAVE BEEN APPLIED TO THE GUARD:  
(i) 0.5 kN/m (34 lb/ft) UNIFORM LOAD ALONG THE TOP OR  
(ii) 1.0 KN (225 lb) CONCENTRATED LOAD AT ANY POINT, WHICHEVER GOVERNS.
5. THESE DETAILS ARE FOR USE IN HOUSES AND SMALL BUILDINGS CONFORMING TO THE REQUIREMENTS OF PART 9 OF THE 2012 ONTARIO BUILDING CODE AND THE 2010 NATIONAL BUILDING CODE. THESE DETAILS ARE FOR GUARDS NOT SERVING NOT MORE THAN TWO DWELLING UNITS AND PROVIDE AN ALTERNATIVE TO THE DETAILS GIVEN IN SB-7 OF THE ONTARIO BUILDING CODE.

COMPONENTS

- ① LV BUILDING PRODUCTS INVISIRAIL TOP CLIPS OR INVISIRAIL LITE 10 CLIPS.
- ② 4x4 POST ANCHORED TO FLOOR STRUCTURE IN ACCORDANCE WITH DETAIL EB-5 TO EB-6 OF SB-7 OF THE ONTARIO BUILDING CODE. POSTS SHALL BE NO.2 OR BETTER SPF PRESURE TREATED WITH A WATER-BORNE PRESERVATIVE, UNTREATED NO.2 OR BETTER CEDAR, OR CLEAR STRAIGHT-GRAINED DARK RED MERANTI.
- ③ 10mm INVISIRAIL TEMPERED GLASS IN ACCORDANCE WITH CAN/CGSB-12.1-M WITH NOTCH FOR BOTTOM CLIP BY LV BUILDING PRODUCTS. ALL GLASS TO BE HEAT SOAKED IN ACCORDANCE WITH SB-13 OF THE ONTARIO BUILDING CODE.
- ④ LV BUILDING PRODUCTS INVISIRAIL BOTTOM CLIPS OR INVISIRAIL LITE 10 CLIPS.
- ⑤ 6x6 NO.1 OR BETTER CEDAR POST ANCHORED TO FLOOR STRUCTURE AS PER DWG S10.
- ⑥ 3/8" THICK GRADE 316 STAINLESS STEEL INVISIRAIL POST
- ⑦ HOT-DIPPED GALVANIZED DECKLOK BRACKET IN ACCORDANCE WITH ICC-ES REPORT ESR-2114.

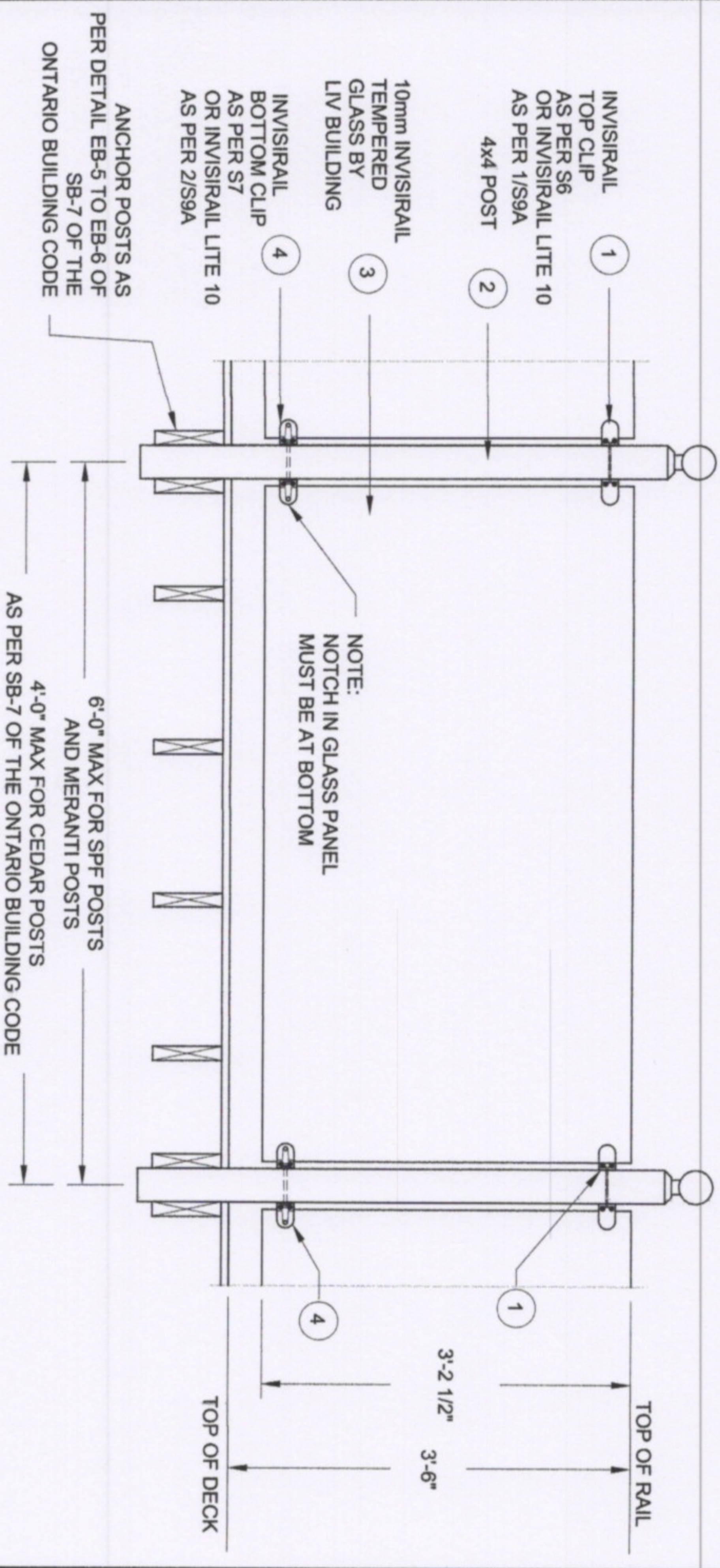
FOR PRODUCT INQUIRIES  
CONTACT LV BUILDING  
PRODUCTS AT  
905-852-3733



**INVISIRAIL™**  
GLASS RAIL SYSTEM

PROJECT: LV BUILDING PRODUCTS RESIDENTIAL INVISIRAIL GUARD	
GENERAL NOTES	
PROJECT No.: S1 R1	DRAWING No.: S1 R1

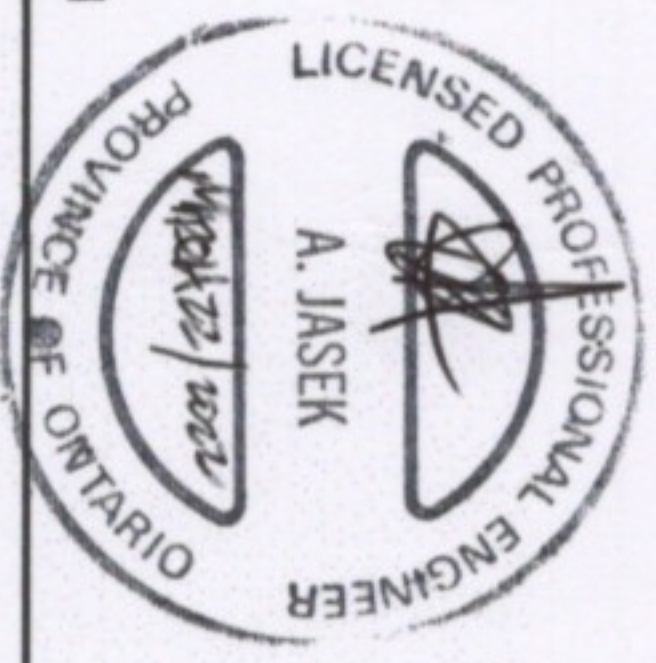




1 42" GUARD w/  
S2 4x4 POSTS

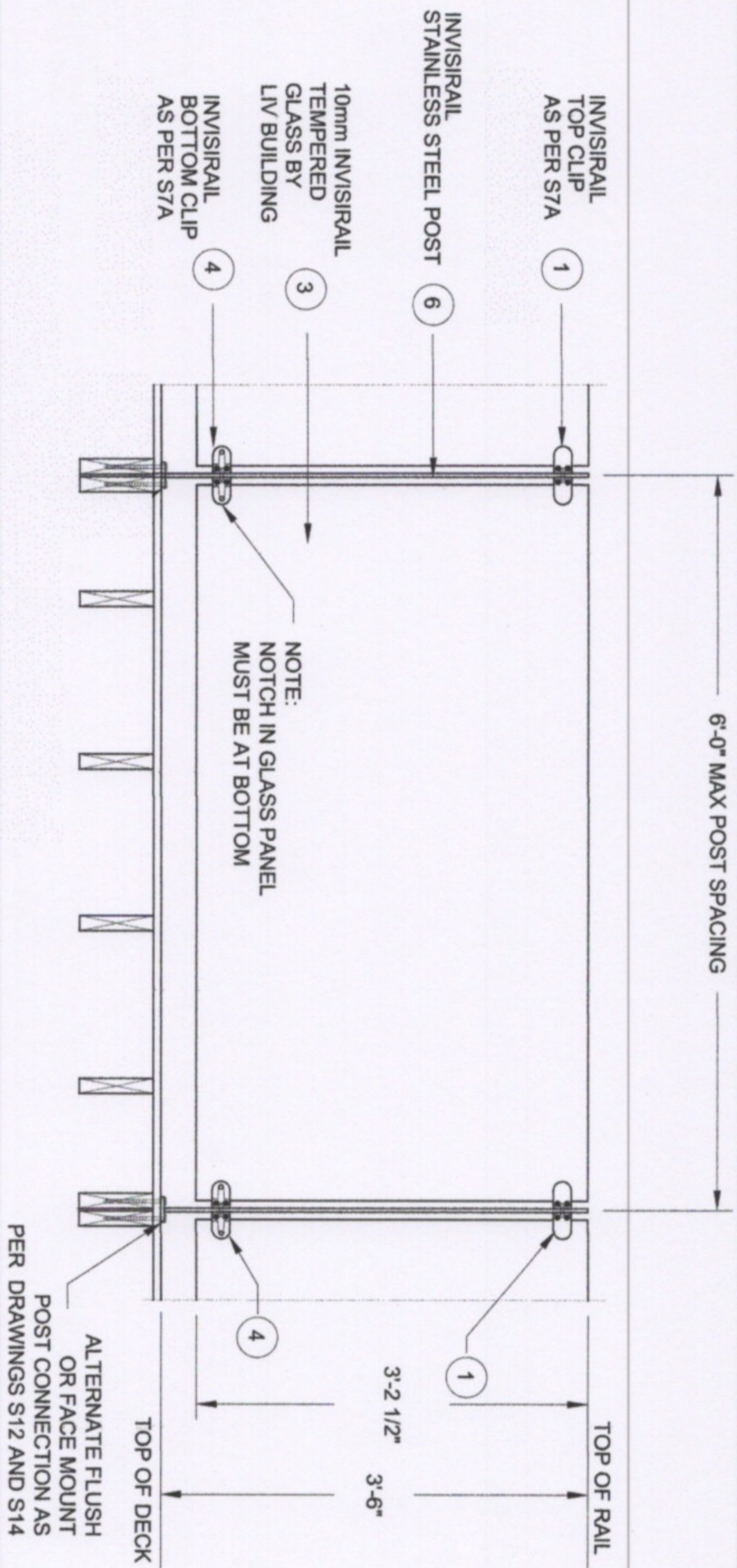
FOR PRODUCT INQUIRIES  
CONTACT LIV BUILDING  
PRODUCTS AT  
905-852-3733

SEE NOTES ON DRAWING S1

  
**INVISIRAIL™**  
 GLASS RAIL SYSTEM

PROJECT: LIV BUILDING PRODUCTS RESIDENTIAL INVISIRAIL GUARD	
42" GUARD WITH 4x4 POSTS PROJECT No.:	DRAWING No.: S2 R1

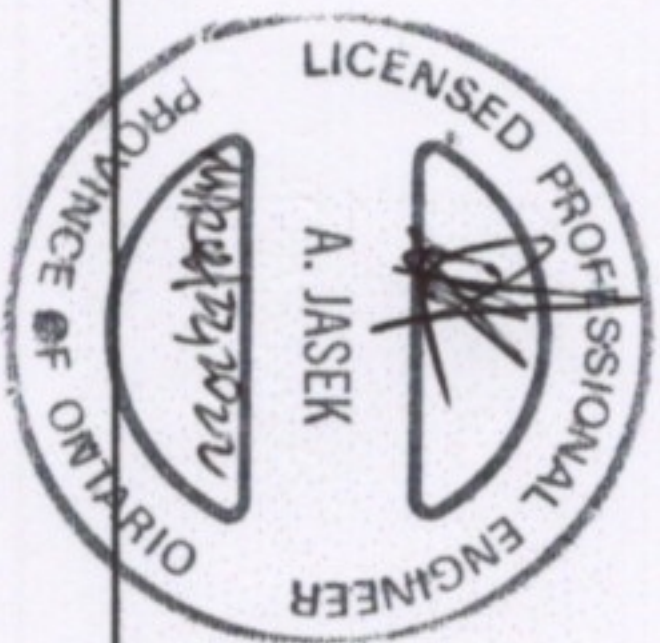




1 42" GUARD w/  
S2A INVISIRAIL STEEL POSTS

FOR PRODUCT INQUIRIES  
CONTACT LIV BUILDING  
PRODUCTS AT  
905-852-3733

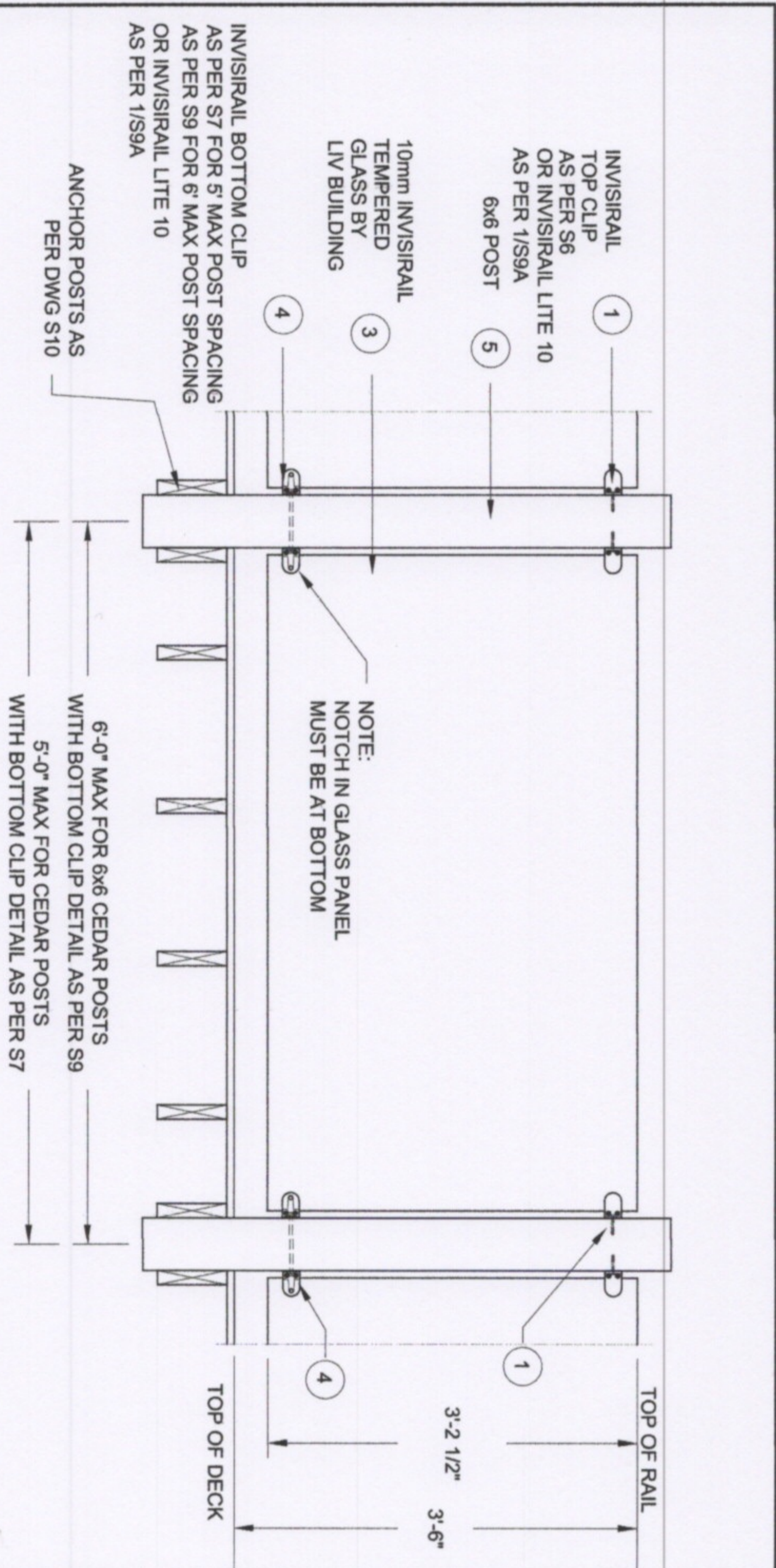
SEE NOTES ON DRAWING S1



**INVISIRAIL™**  
GLASS RAIL SYSTEM

PROJECT: LIV BUILDING PRODUCTS RESIDENTIAL INVISIRAIL GUARD	
42" GUARD WITH INVISIRAIL STEEL POSTS	
PROJECT No.:	DRAWING No.:
	S2A R1





1 42" GUARD w/  
S3 6x6 POSTS

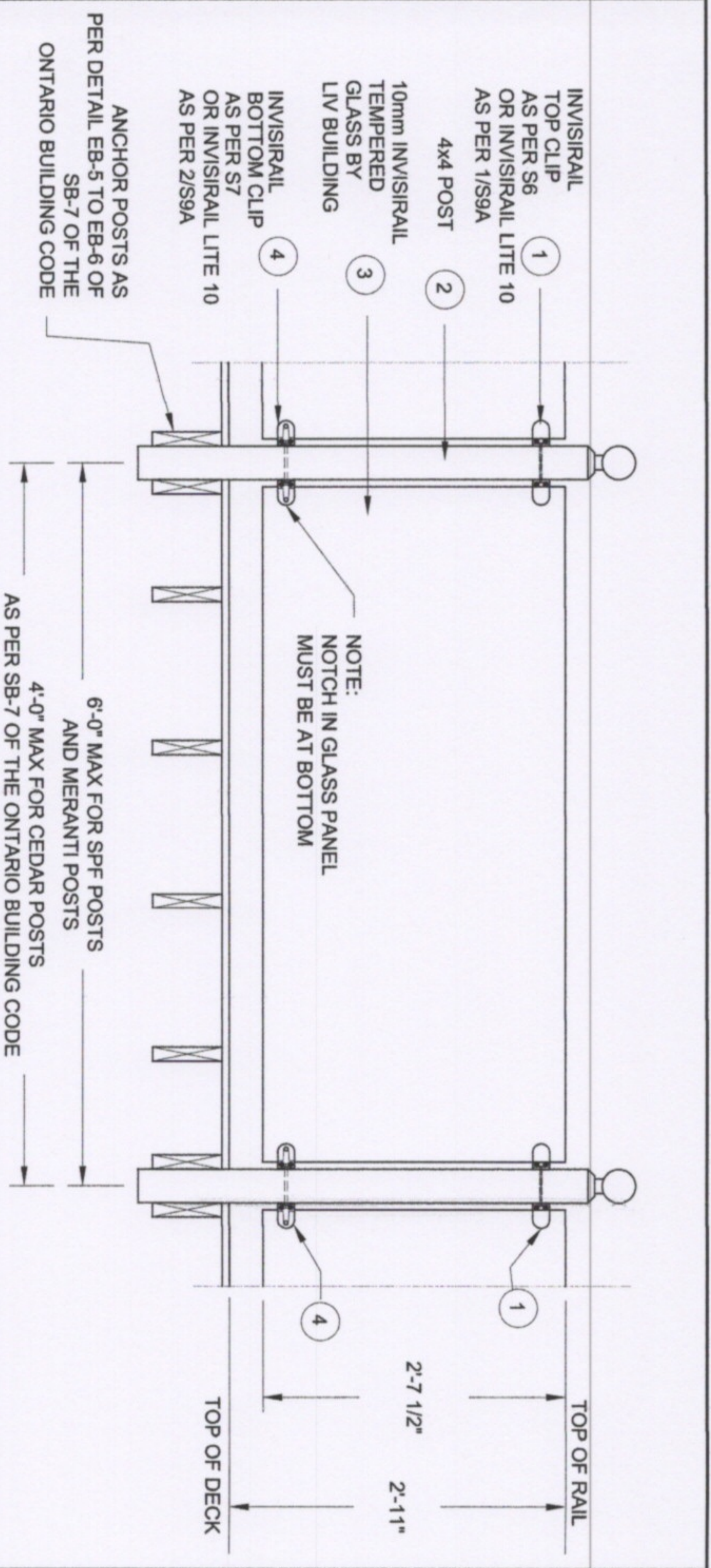
FOR PRODUCT INQUIRIES  
CONTACT LIV BUILDING  
PRODUCTS AT  
905-852-3733



**INVISIRAIL**  
GLASS RAIL SYSTEM

PROJECT: LIV BUILDING PRODUCTS RESIDENTIAL INVISIRAIL GUARD	
42" GUARD WITH 6x6 CEDAR POSTS	
PROJECT No.:	DRAWING No.: S3 R1

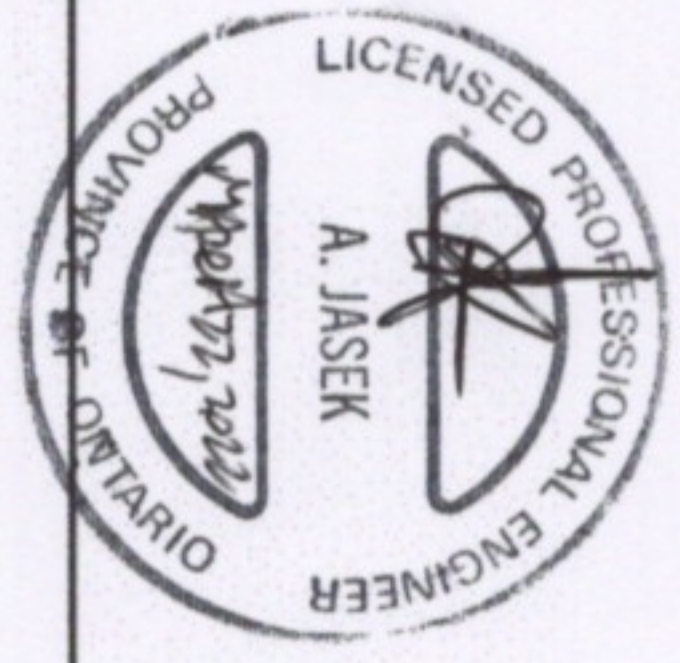




1 35" GUARD w/  
S4 4x4 POSTS

IMPORTANT NOTE:  
THE 2-11 GUARD MAY ONLY BE  
USED FOR DECKS SERVING ONE  
DWELLING UNIT AND WHERE  
THE TOP OF THE DECK IS NOT  
MORE THAN 5'-11" ABOVE  
GROUND LEVEL.

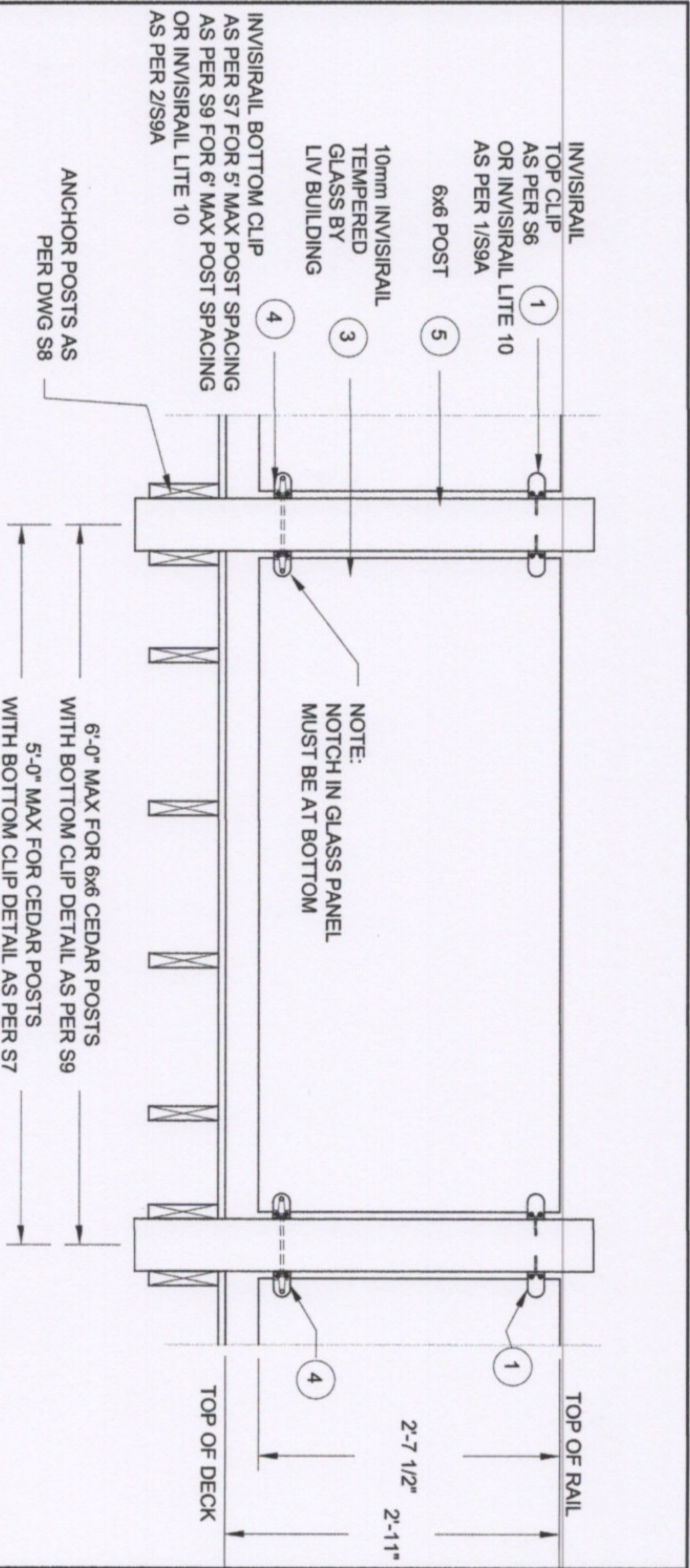
FOR PRODUCT INQUIRIES  
CONTACT LIV BUILDING  
PRODUCTS AT  
905-852-3733



PROJECT: LIV BUILDING PRODUCTS RESIDENTIAL INVISIRAIL GUARD	
35" GUARD WITH 4x4 POSTS	
PROJECT No.:	DRAWING No.: S4 R1

SEE NOTES ON DRAWING S1

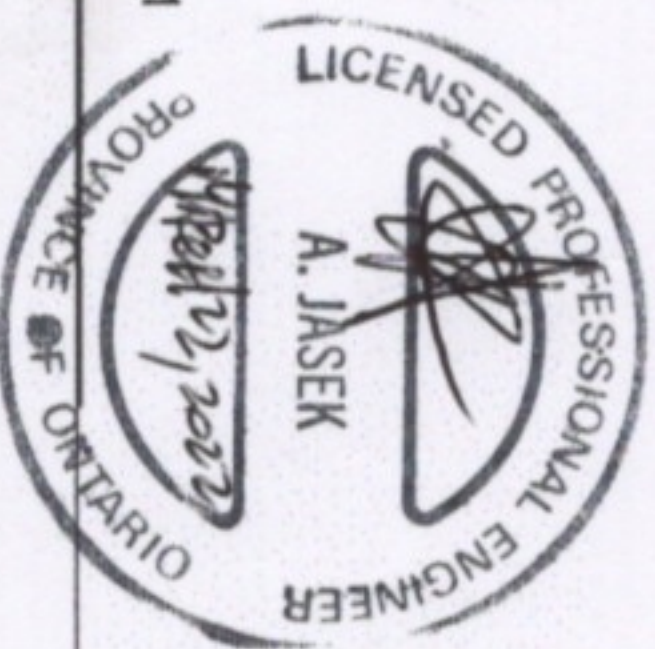




1 35" GUARD w/  
S5 6x6 POSTS

IMPORTANT NOTE:  
THE 2'-11" GUARD MAY ONLY BE  
USED FOR DECKS SERVING ONE  
DWELLING UNIT AND WHERE  
THE TOP OF THE DECK IS NOT  
MORE THAN 5'-11" ABOVE  
GROUND LEVEL.

FOR PRODUCT INQUIRIES  
CONTACT LIV BUILDING  
PRODUCTS AT  
905-852-3733



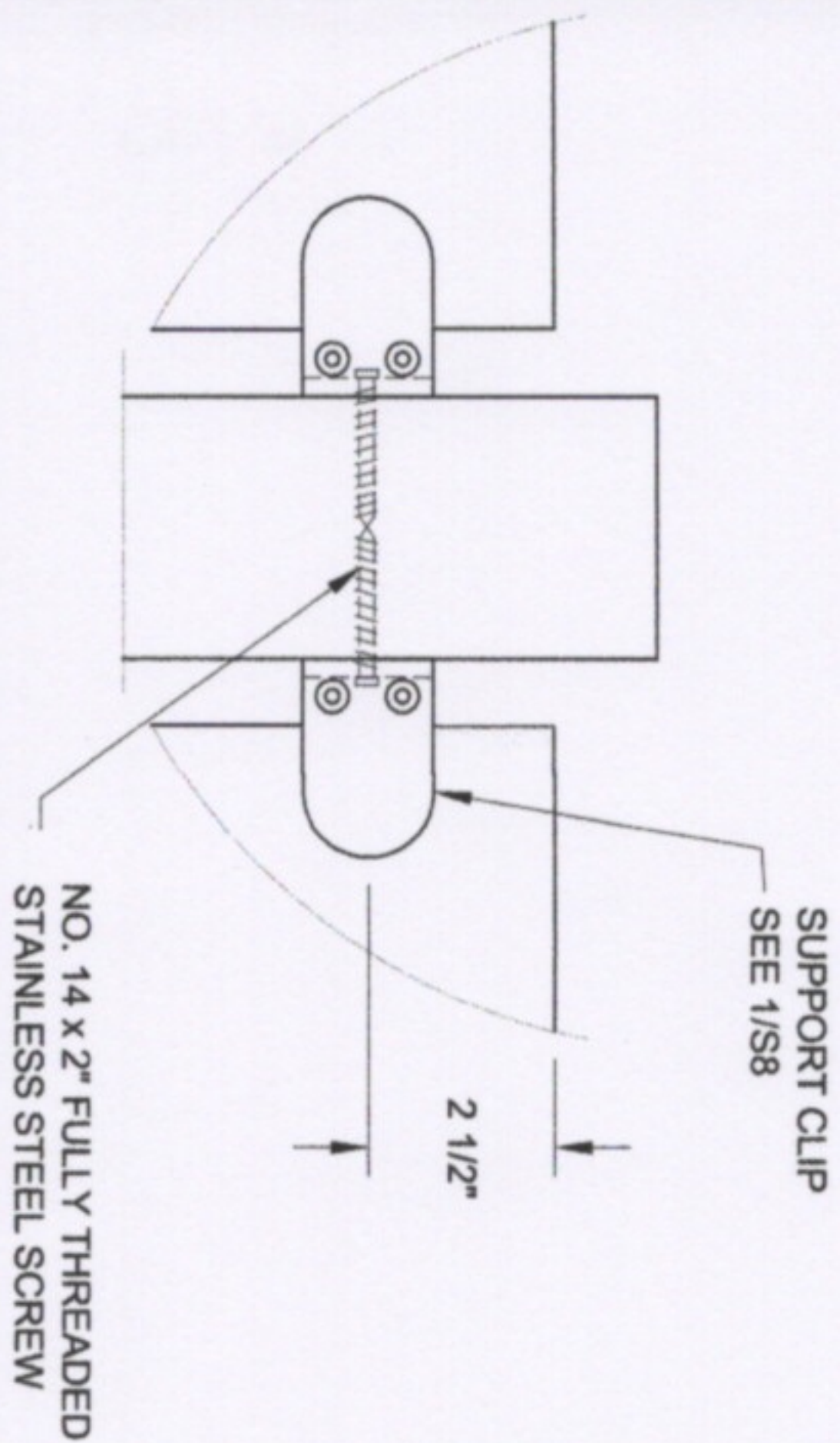
**INVISIRAIL**<sup>TM</sup>

GLASS RAIL SYSTEM

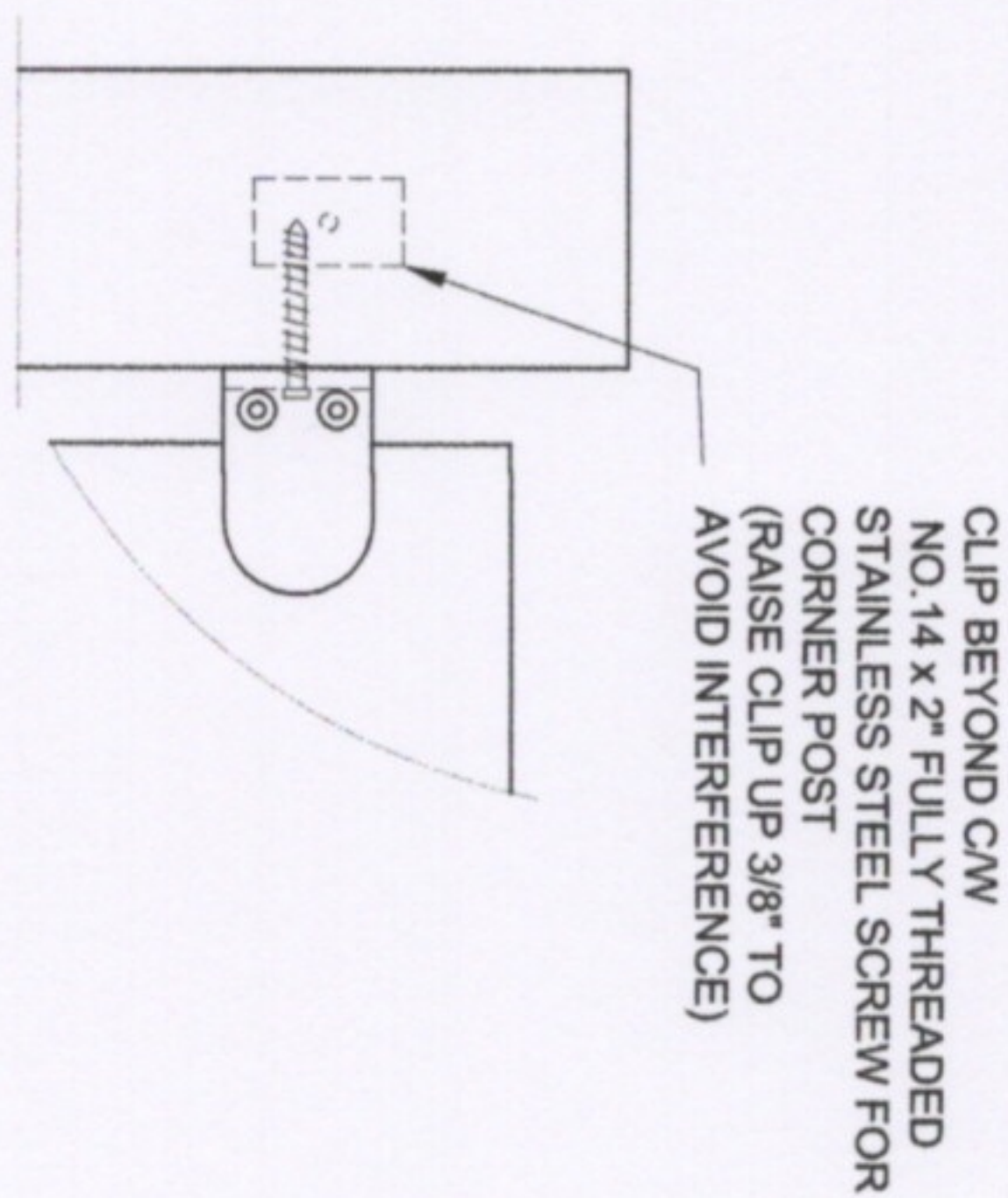
PROJECT:	
LIV BUILDING PRODUCTS RESIDENTIAL INVISIRAIL GUARD	
35" GUARD WITH 6x6 CEDAR POSTS	
PROJECT No.:	DRAWING No.:
	S5 R1

SEE NOTES ON DRAWING S1





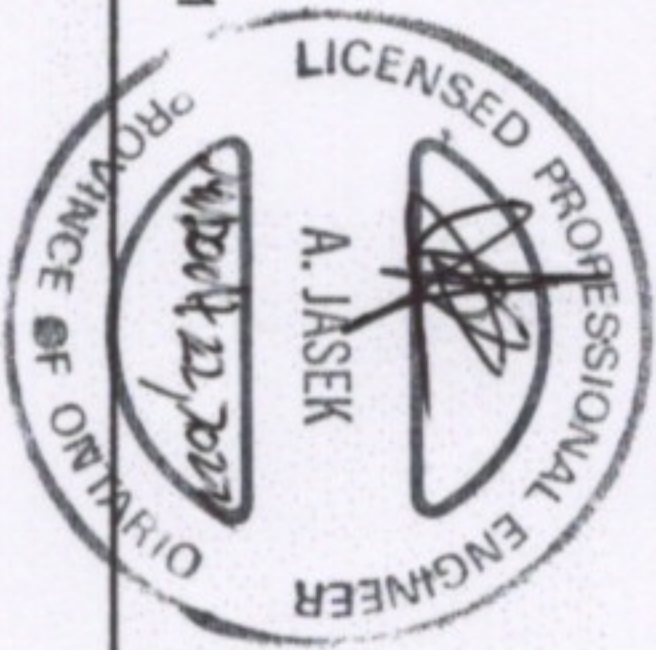
1 TOP CLIP - INTERMEDIATE POST  
S6



2 TOP CLIP - END / CORNER POST  
S6

FOR PRODUCT INQUIRIES  
CONTACT LIV BUILDING  
PRODUCTS AT  
905-852-3733

SEE NOTES ON DRAWING S1

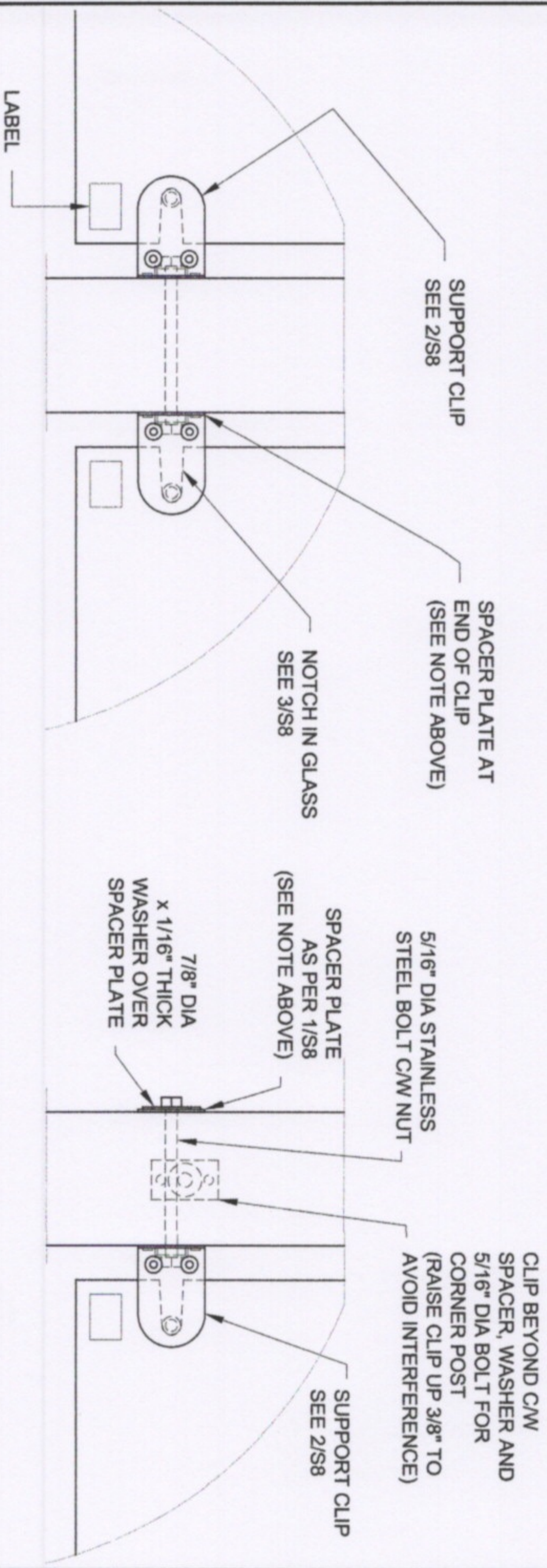


**INVISIRAIL**  
GLASS RAIL SYSTEM

PROJECT:	
LIV BUILDING PRODUCTS RESIDENTIAL INVISIRAIL GUARD	
INVISIRAIL TOP CLIP DETAILS	
PROJECT No.:	DRAWING No.:
	S6



NOTE:  
SPACER PLATES MAY BE OMITTED FOR THE FOLLOWING:  
- SPF AND CEDAR POSTS SPACED UP TO 4'-0" O/C  
- MERANTI POSTS SPACED UP TO 6'-0" O/C



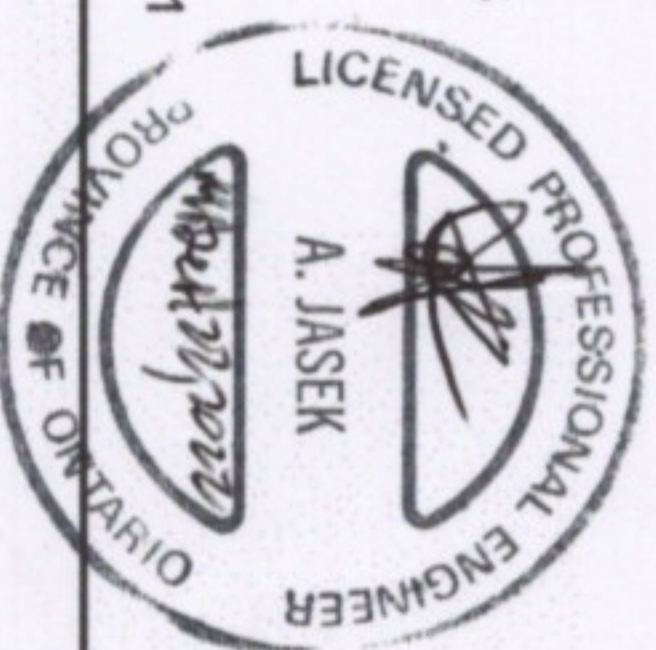
1  
S7

BOTTOM CLIP - INTERMEDIATE POST

2  
S7

BOTTOM CLIP - END / CORNER POST

FOR PRODUCT INQUIRIES  
CONTACT LIV BUILDING  
PRODUCTS AT  
905-852-3733



**INVISIRAIL**  
GLASS RAIL SYSTEM

PROJECT:

LIV BUILDING PRODUCTS  
RESIDENTIAL INVISIRAIL GUARD

INVISIRAIL BOTTOM CLIP DETAILS

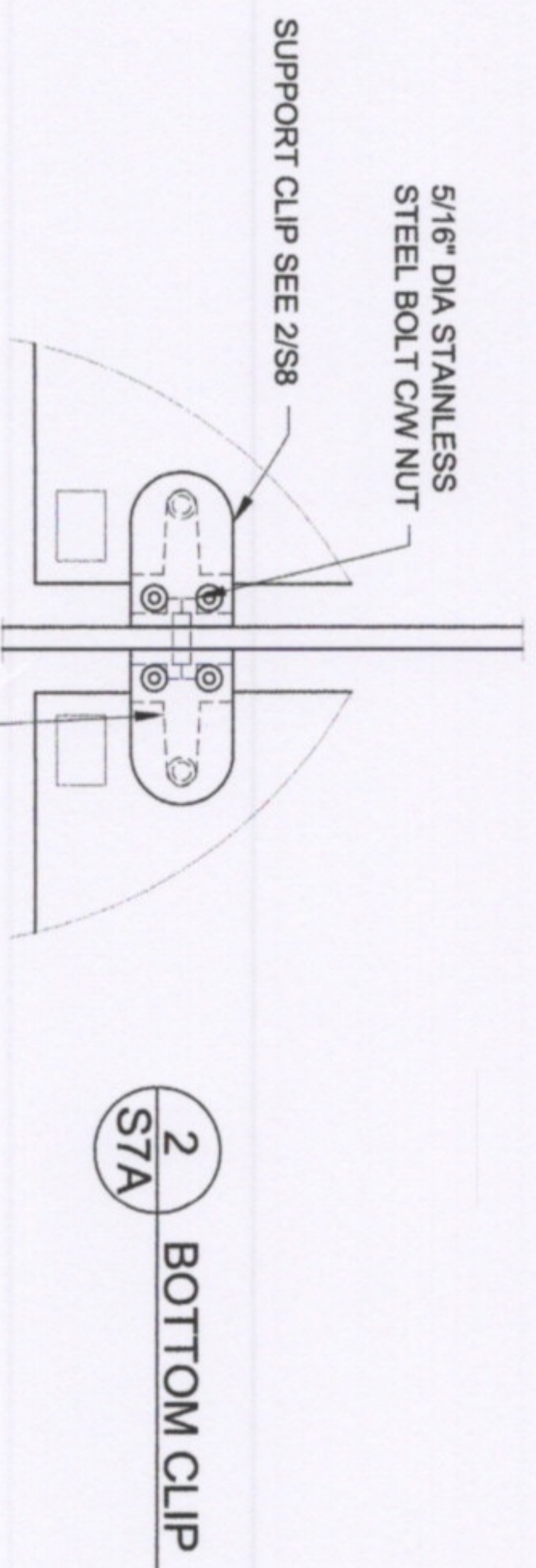
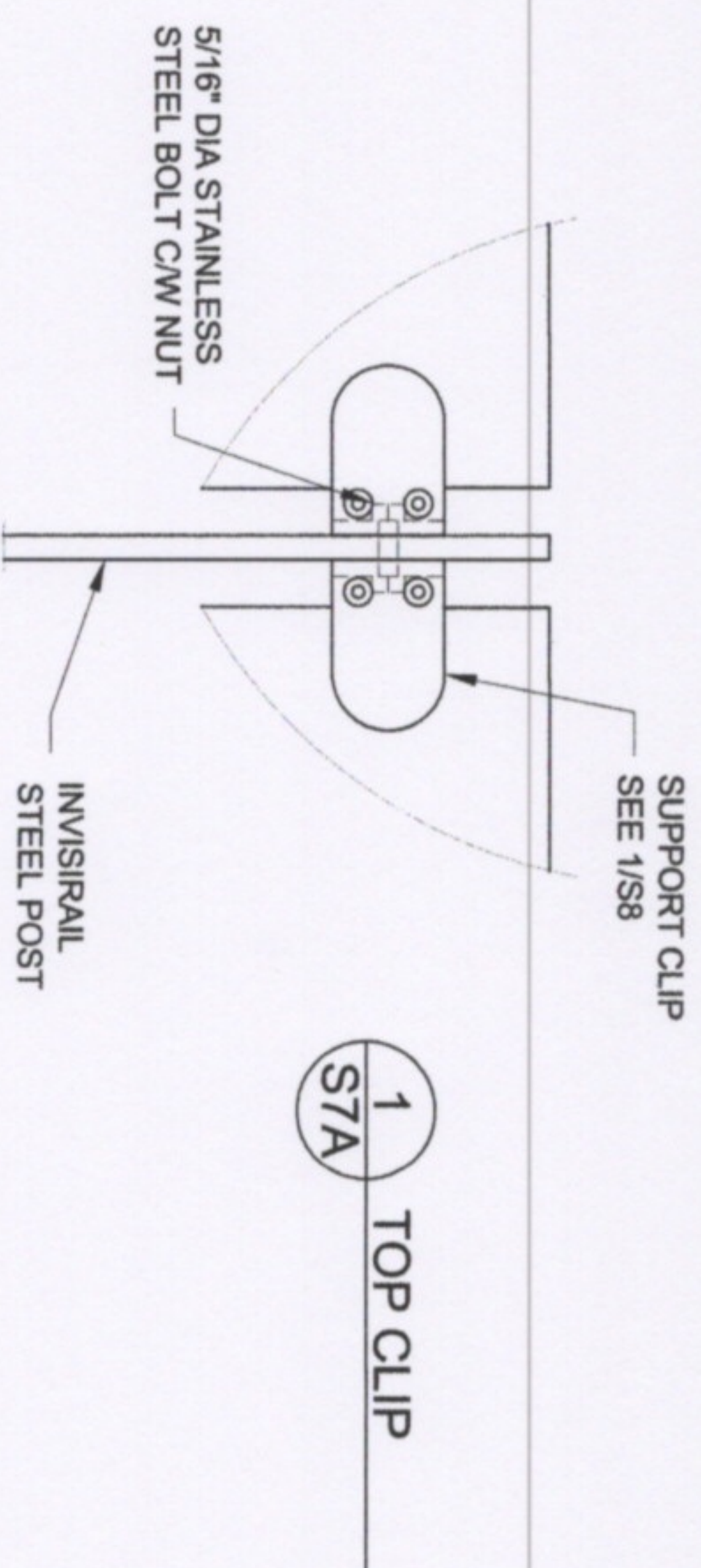
PROJECT No.:

DRAWING No.:

S7

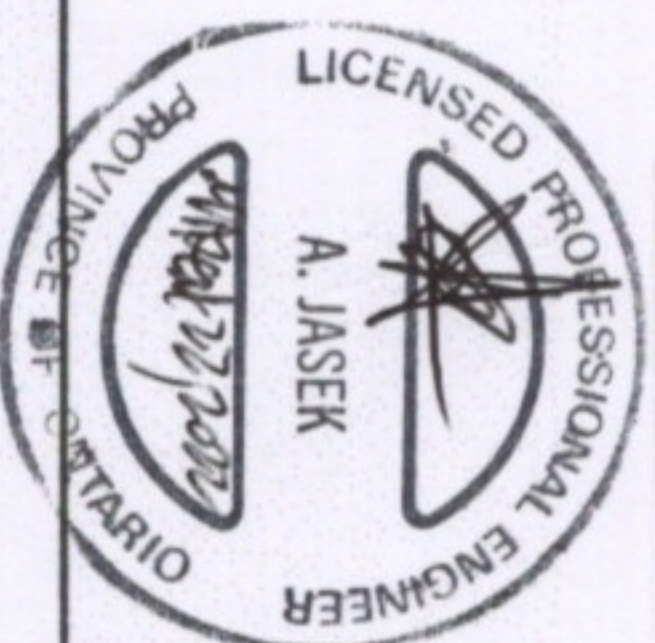
SEE NOTES ON DRAWING S1





FOR PRODUCT INQUIRIES  
CONTACT LIV BUILDING  
PRODUCTS AT  
905-852-3733

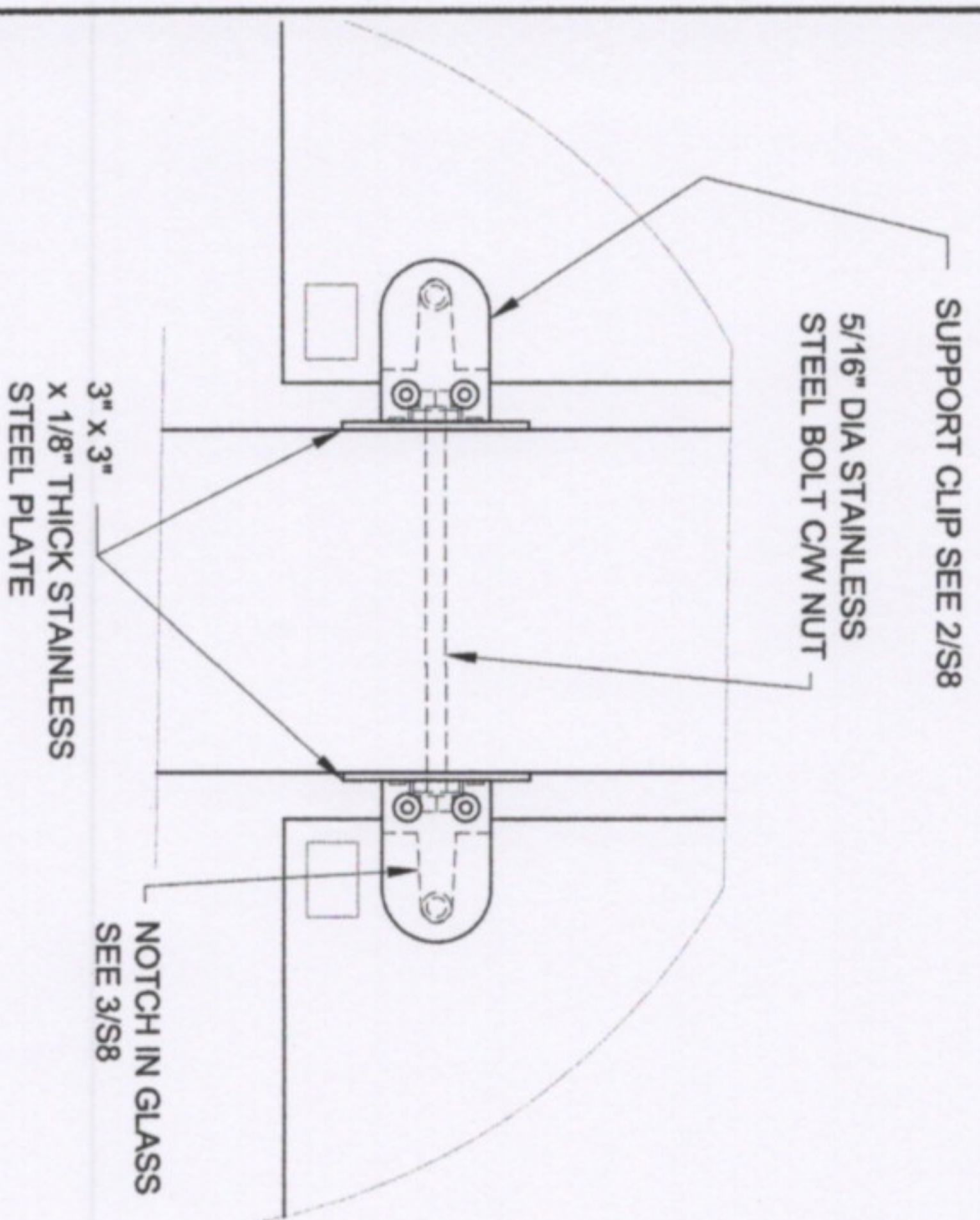
SEE NOTES ON DRAWING S1



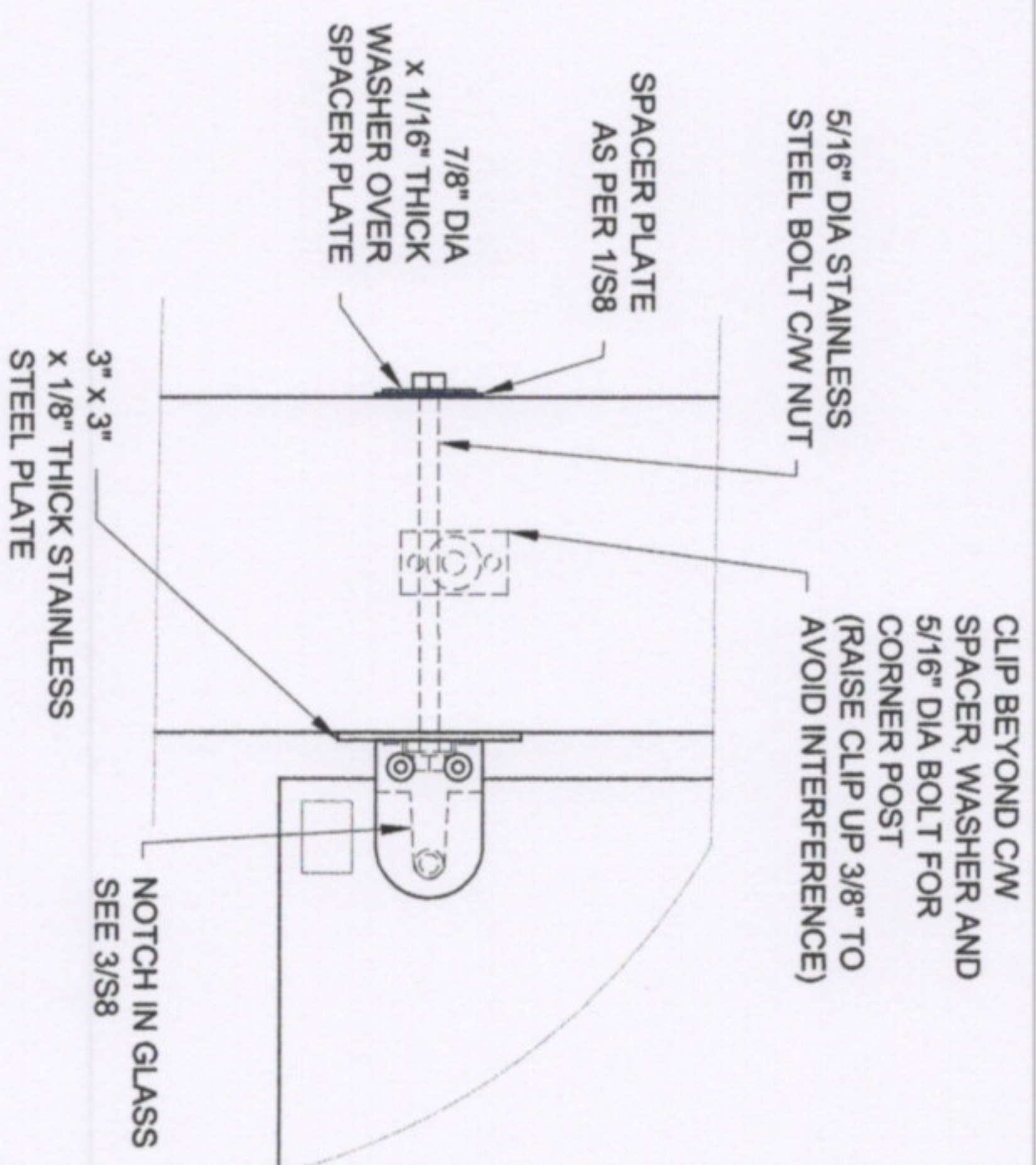
**INVISIRAIL™**  
GLASS RAIL SYSTEM

PROJECT:	
LIV BUILDING PRODUCTS RESIDENTIAL INVISIRAIL GUARD	
INVISIRAIL POST CLIP DETAILS	
PROJECT No.:	DRAWING No.:
	S7 A





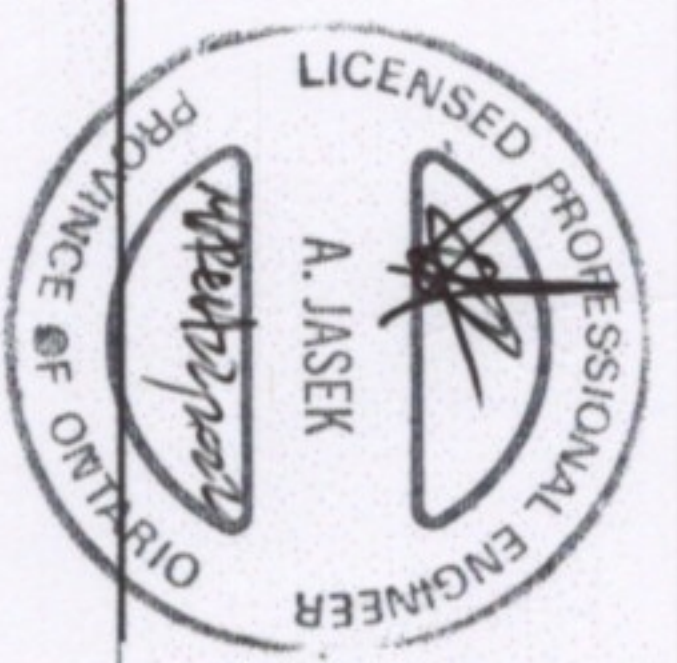
1  
S9 BOTTOM CLIP - INTERMEDIATE POST



2  
S9 BOTTOM CLIP - CORNER POST

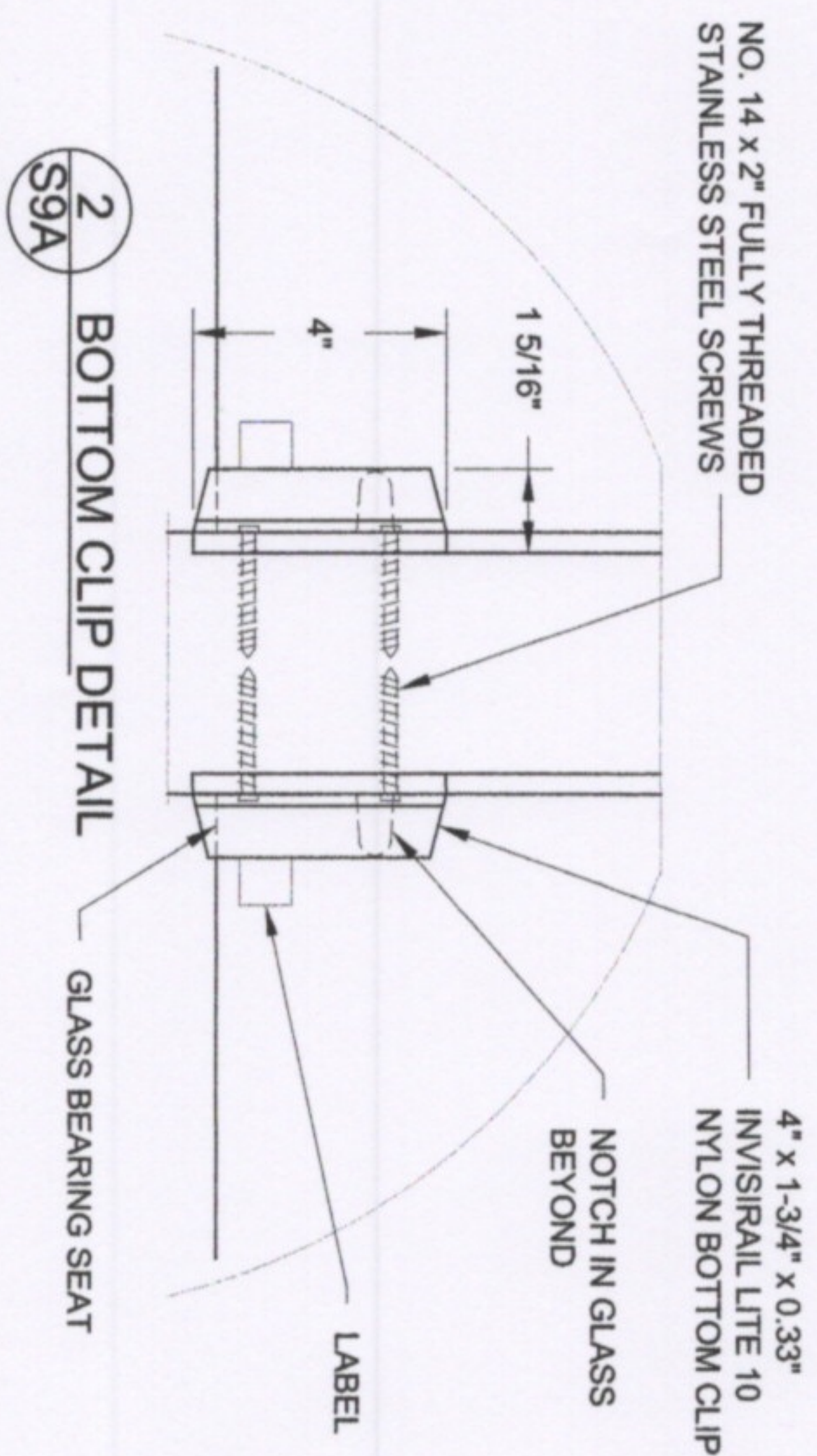
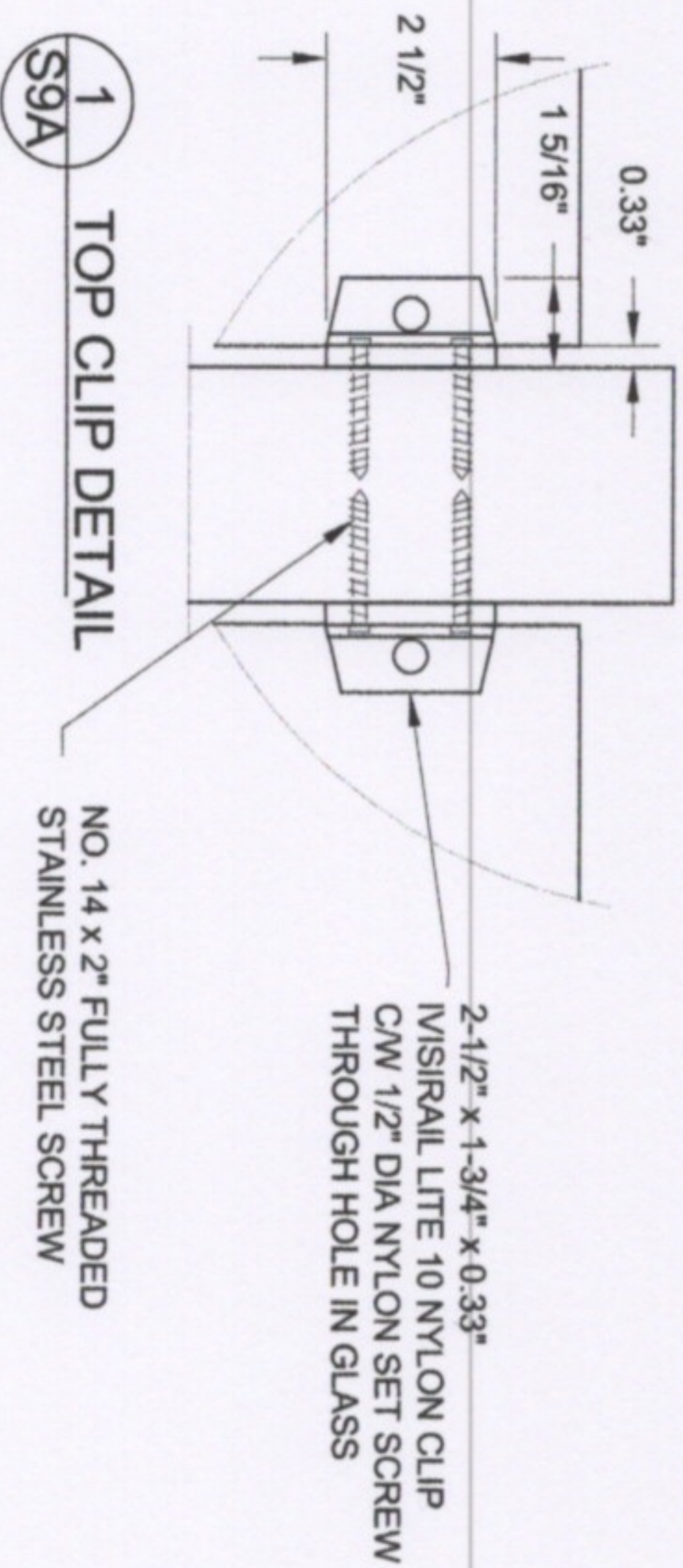
FOR PRODUCT INQUIRIES  
CONTACT LIV BUILDING  
PRODUCTS AT  
905-852-3733

SEE NOTES ON DRAWING S1



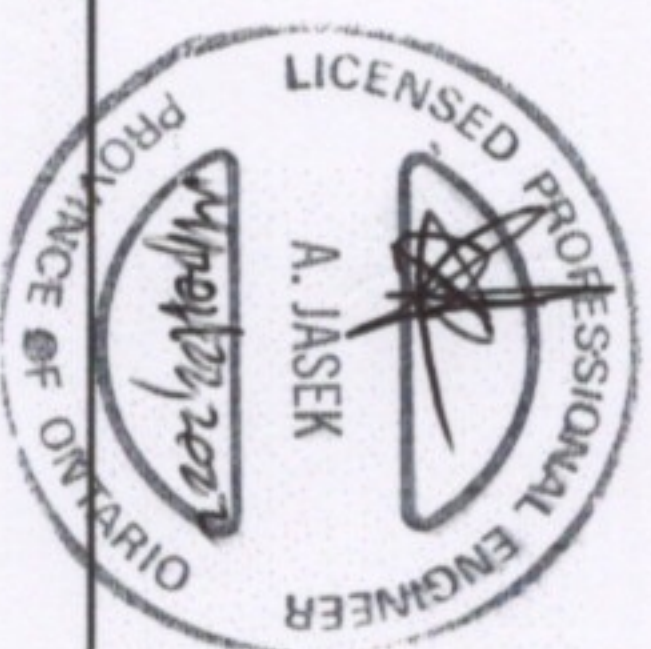
PROJECT:	
LIV BUILDING PRODUCTS RESIDENTIAL INVISIRAIL GUARD	
INVISIRAIL BOTTOM CLIP DETAILS FOR 6x6 CEDAR POSTS AT 6' O/C	
PROJECT No.:	DRAWING No.:
	S9





FOR PRODUCT INQUIRIES  
CONTACT LIV BUILDING  
PRODUCTS AT  
905-852-3733

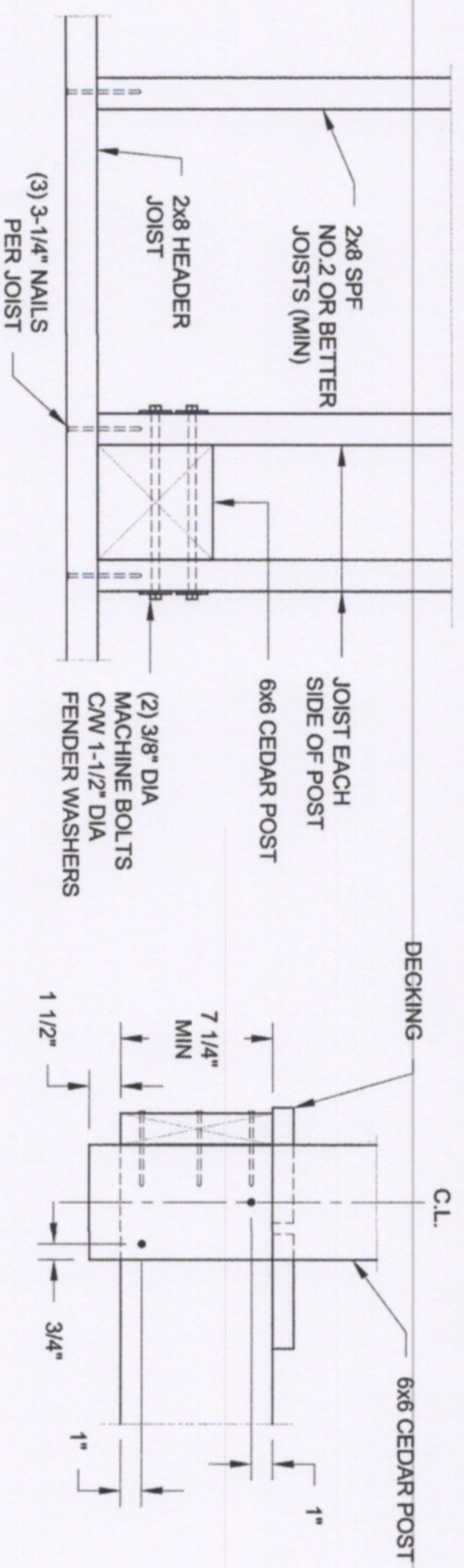
SEE NOTES ON DRAWING S1



**INVISIRAIL**  
GLASS RAIL SYSTEM

PROJECT:	
LIV BUILDING PRODUCTS RESIDENTIAL INVISIRAIL GUARD	
INVISIRAIL LITE 10 CLIP DETAILS FOR WOOD POSTS	
PROJECT No.:	DRAWING No.:
	S9A





PLAN VIEW

SECTION

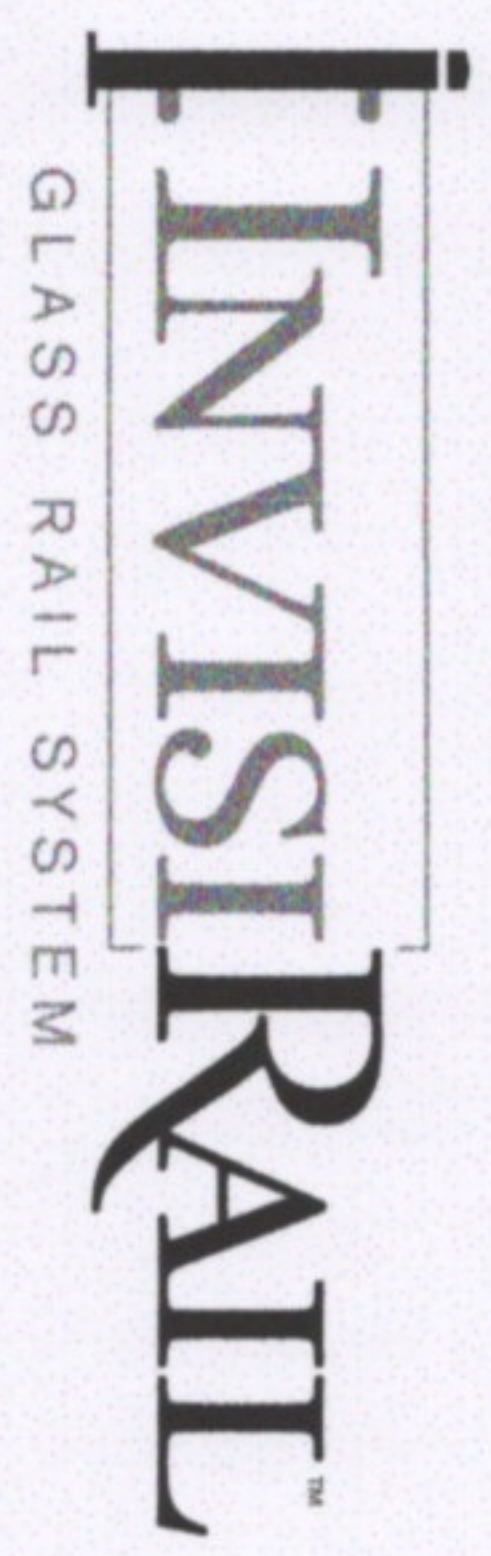
**1**  
**S10** 6x6 CEDAR POST TO JOIST CONNECTION  
1-1/2" = 1'-0"

NOTE:

1. FASTENERS TO HAVE A CORROSION RESISTANT COATING AS PER SB-7 OF THE ONTARIO BUILDING CODE, OR SHALL BE STAINLESS STEEL.
2. THIS DETAIL IS ADAPTED FROM DETAIL EB-5 OF SB-7 OF THE ONTARIO BUILDING CODE AND EVALUATED FOR 6x6 CEDAR POSTS SPACED UP TO 4' O/C

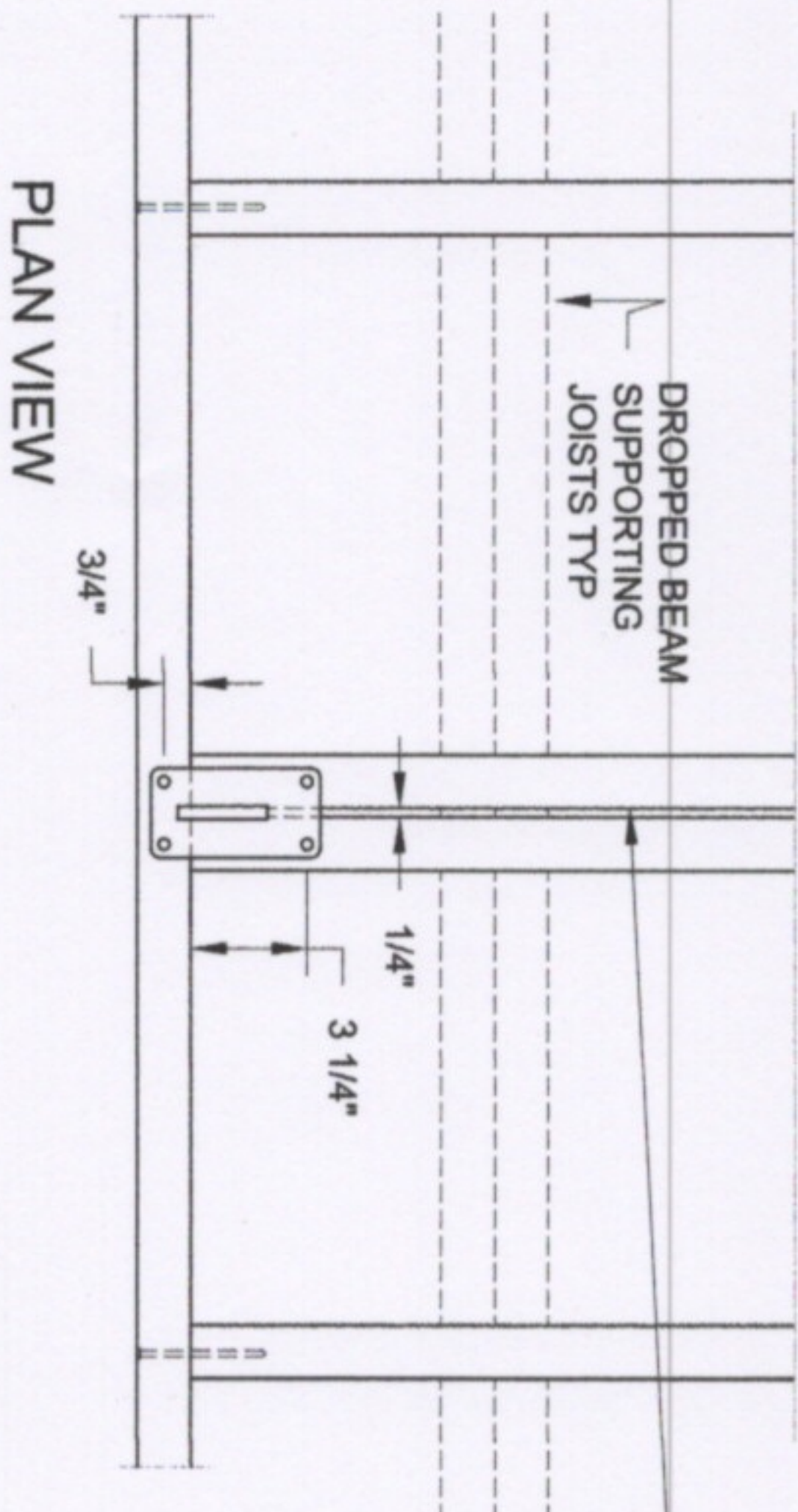
FOR PRODUCT INQUIRIES  
CONTACT LIV BUILDING  
PRODUCTS AT  
905-852-3733

SEE NOTES ON DRAWING S1

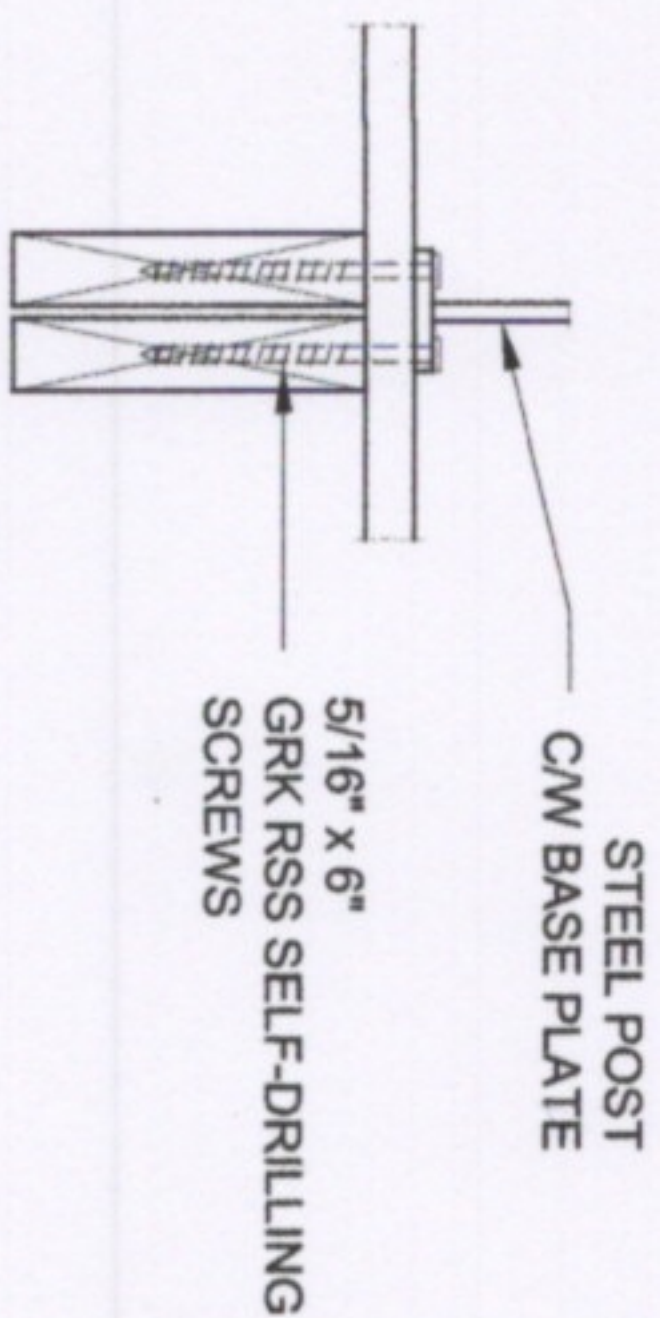


PROJECT:	
LIV BUILDING PRODUCTS RESIDENTIAL INVISIRAIL GUARD	
6x6 POST ANCHORAGE DETAIL	
PROJECT No.:	DRAWING No.:
	S10





PLAN VIEW



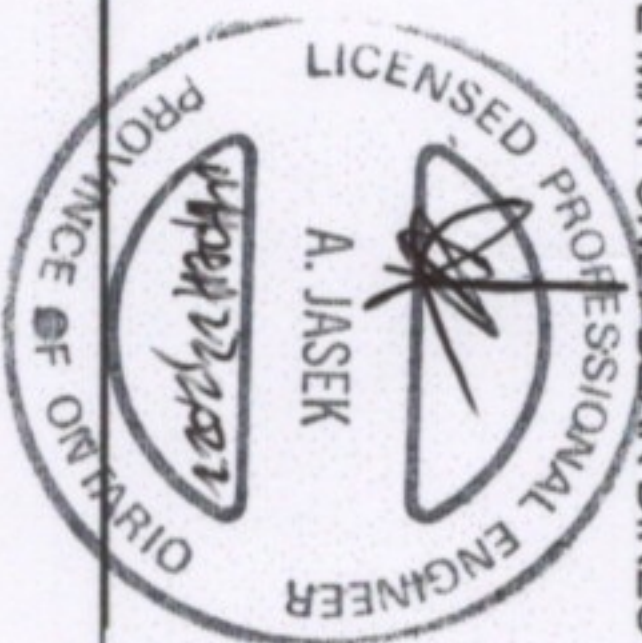
ELEVATION

# 1 S12 FLUSH MOUNT INVISIRAIL STEEL POST CONNECTION 1-1/2" = 1'-0"

NOTE: BASEPLATE MAY ONLY BEAR DIRECTLY ON SPECIFIED DECKING PRODUCTS- SEE SECTION.

FOR PRODUCT INQUIRIES  
CONTACT LIV BUILDING  
PRODUCTS AT  
905-852-3733

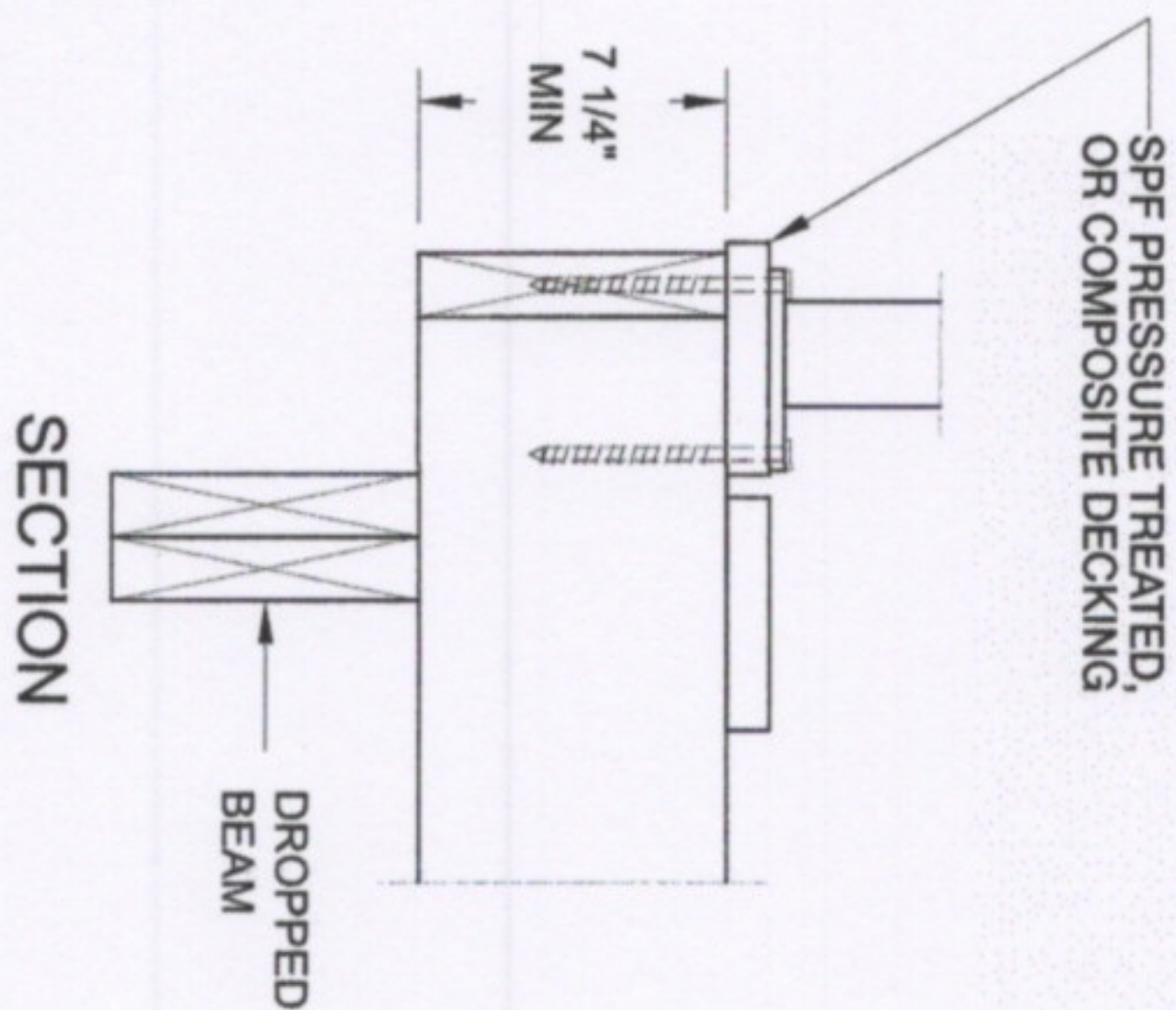
SEE NOTES ON DRAWING S1



**INVISIRAIL**  
GLASS RAIL SYSTEM

DOUBLE 2x8 NO.2 SPF JOIST MIN

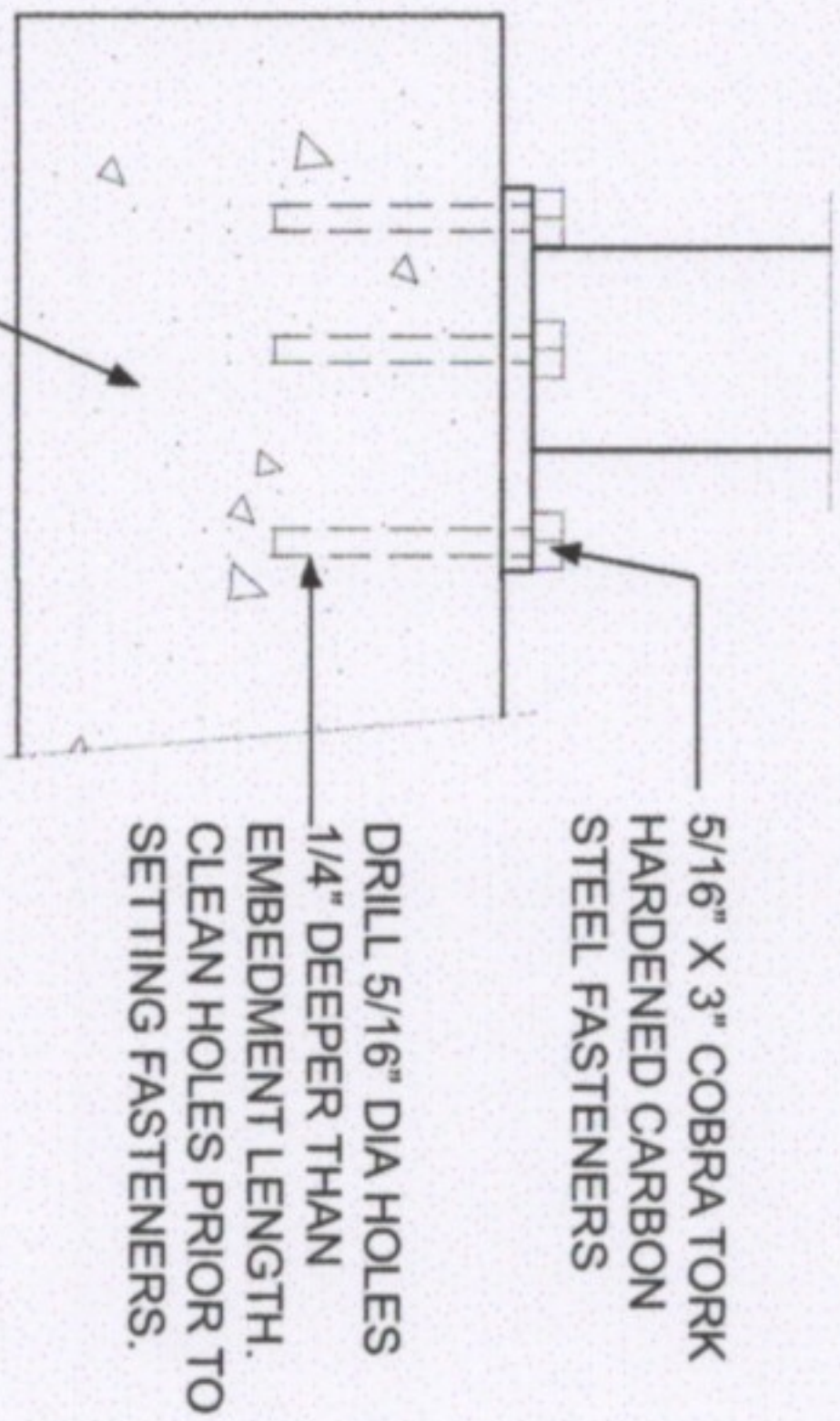
NOTE:  
FASTEN STEEL POST TO 2X8 BLOCKING WHERE THE  
GUARD IS PARALLEL TO THE FLOOR JOISTS. FASTEN  
BLOCKING TO ADJACENT FLOOR JOIST WITH 3-1/2"  
END-NAILS AS PER DETAIL EB6 OF SB-7  
OF THE ONTARIO BUILDING CODE.



SECTION

PROJECT:	
LIV BUILDING PRODUCTS RESIDENTIAL INVISIRAIL GUARD	
FLUSH MOUNT STEEL POST CONNECTION DETAIL	
PROJECT No.:	DRAWING No.:
	S12 R1

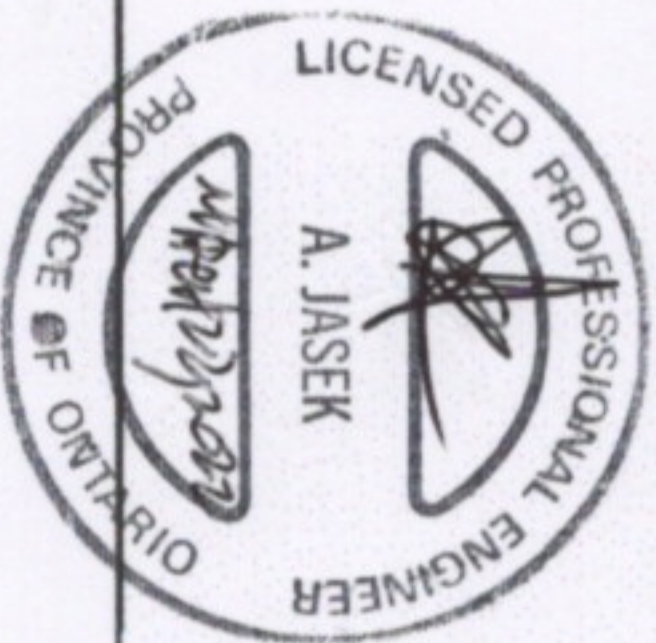




SECTION

1 FLUSH MOUNT INVISIRAIL STEEL POST CONNECTION - CONCRETE SLAB  
S12A 1-1/2" = 1'-0"

FOR PRODUCT INQUIRIES  
CONTACT LIV BUILDING  
PRODUCTS AT  
905-852-3733

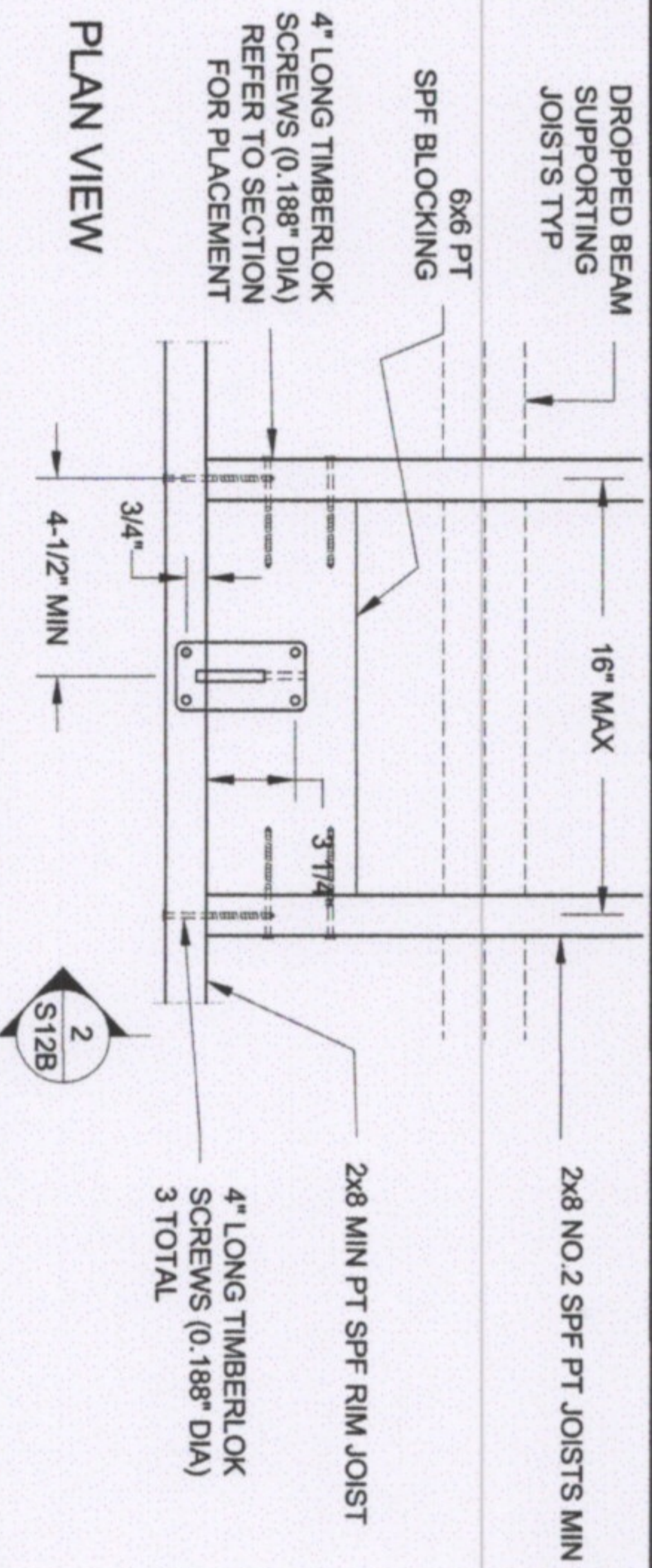


**INVISIRAIL**  
GLASS RAIL SYSTEM

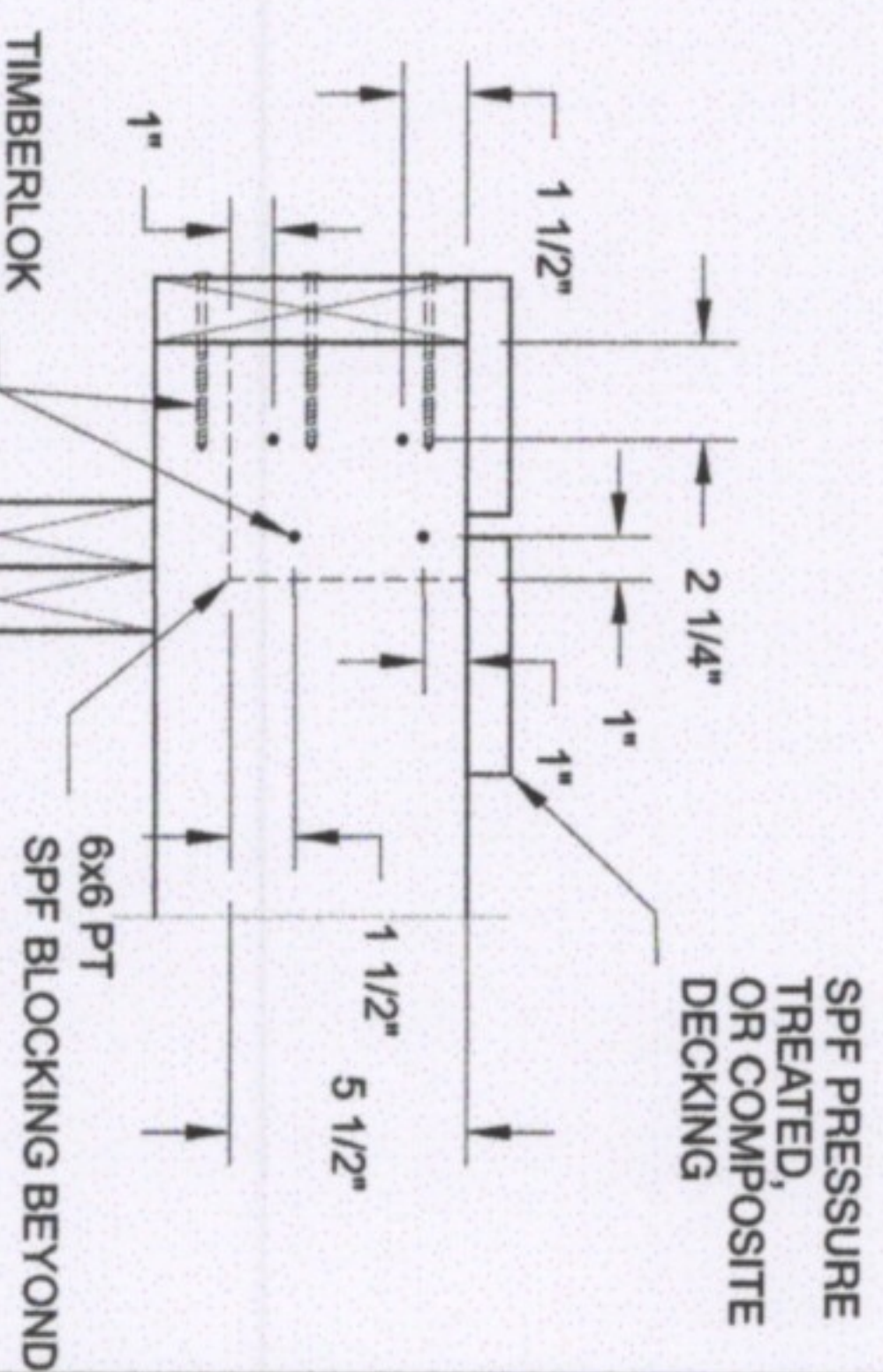
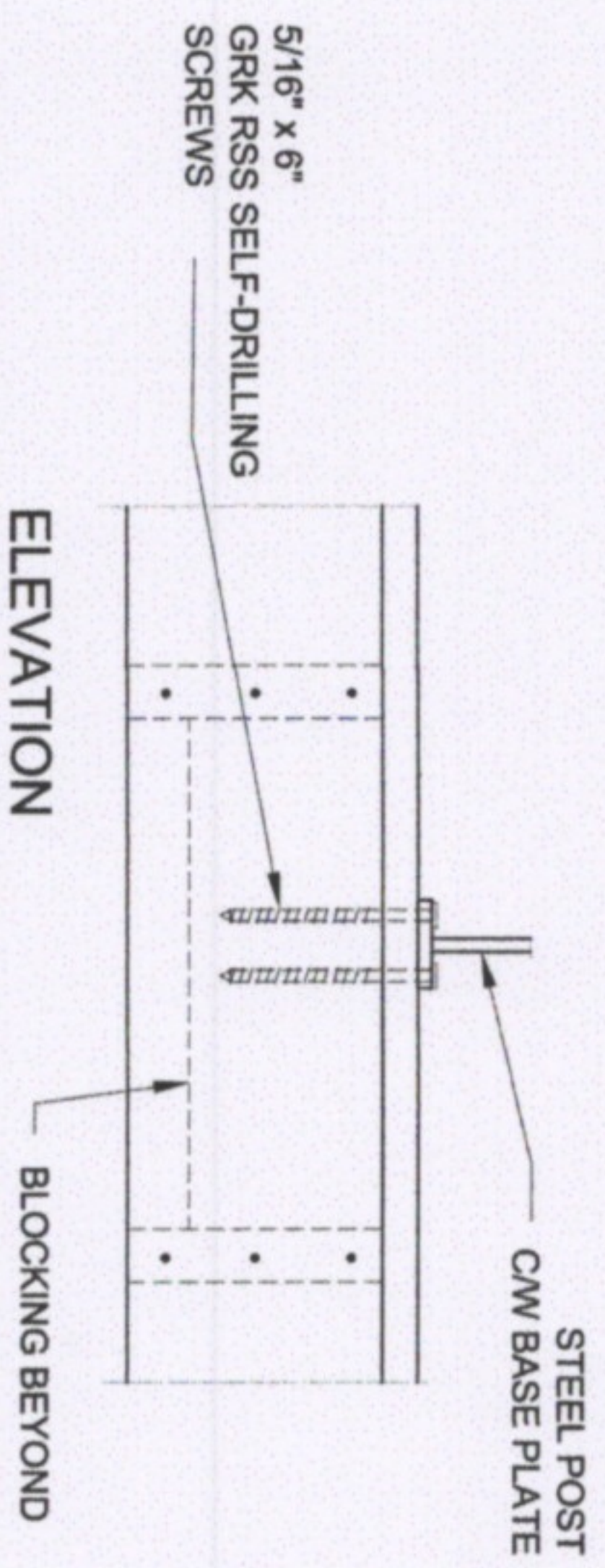
PROJECT:	
LIV BUILDING PRODUCTS RESIDENTIAL INVISIRAIL GUARD	
FLUSH MOUNT INVISIRAIL POST DETAIL FOR CONCRETE SLAB	
PROJECT No.:	DRAWING No.:
	S12A

SEE NOTES ON DRAWING S1





PLAN VIEW



1 ALT FLUSH MOUNT STEEL POST CONNECTION  
S12B 1-1/2" = 1'-0"

NOTE: BASEPLATE MAY ONLY BEAR DIRECTLY ON SPECIFIED DECKING PRODUCTS- SEE SECTION.

FOR PRODUCT INQUIRIES  
CONTACT LIV BUILDING  
PRODUCTS AT  
905-852-3733

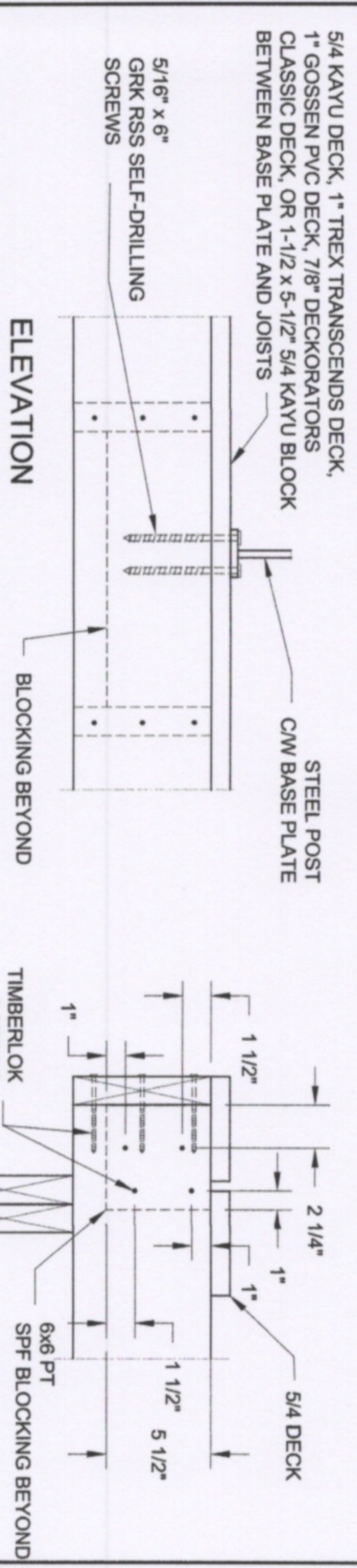
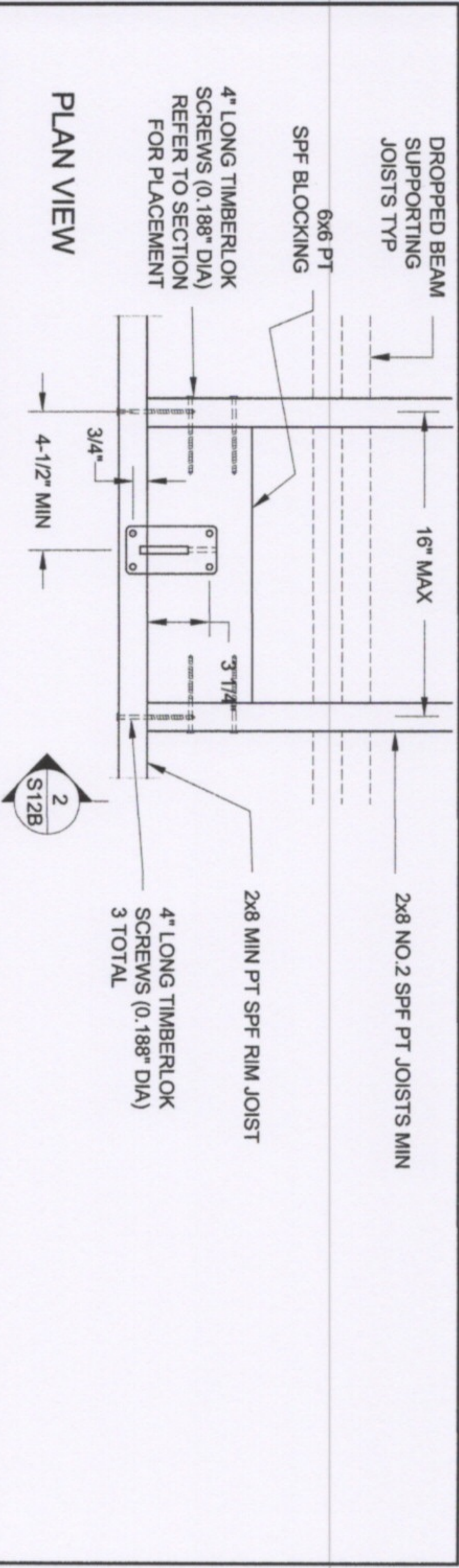
SEE NOTES ON DRAWING S1



**INVISIRAIL™**  
GLASS RAIL SYSTEM

PROJECT:	
LIV BUILDING PRODUCTS	
RESIDENTIAL INVISIRAIL GUARD	
FLUSH MOUNT INVISIRAIL POST CONNECTION DETAIL	
PROJECT No.:	DRAWING No.:
	S12B R1

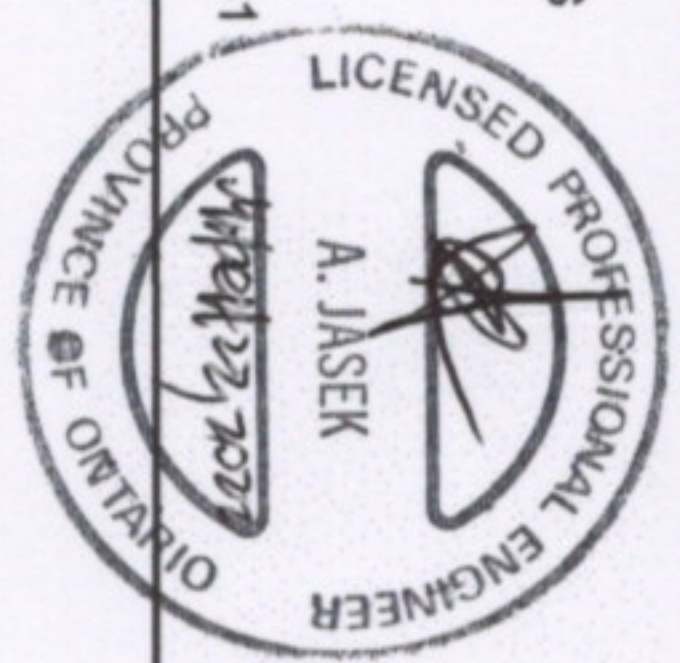




**1**  
**S12B**  
**ALT FLUSH MOUNT STEEL POST CONNECTION**  
1-1/2" = 1'-0"

NOTE: BASEPLATE MAY ONLY BEAR DIRECTLY ON SPECIFIED DECKING PRODUCTS- SEE SECTION.

FOR PRODUCT INQUIRIES  
CONTACT LIV BUILDING  
PRODUCTS AT  
905-852-3733



PROJECT:	
LIV BUILDING PRODUCTS RESIDENTIAL INVISIRAIL GUARD	
FLUSH MOUNT INVISIRAIL POST CONNECTION DETAIL	
PROJECT No.:	DRAWING No.:
	S12B R1

SEE NOTES ON DRAWING S1

**2**  
**S12B**  
**SECTION**  
1-1/2" = 1'-0"



**1** INVISIRAIL STEEL POST DETAILS  
**S13** NTS

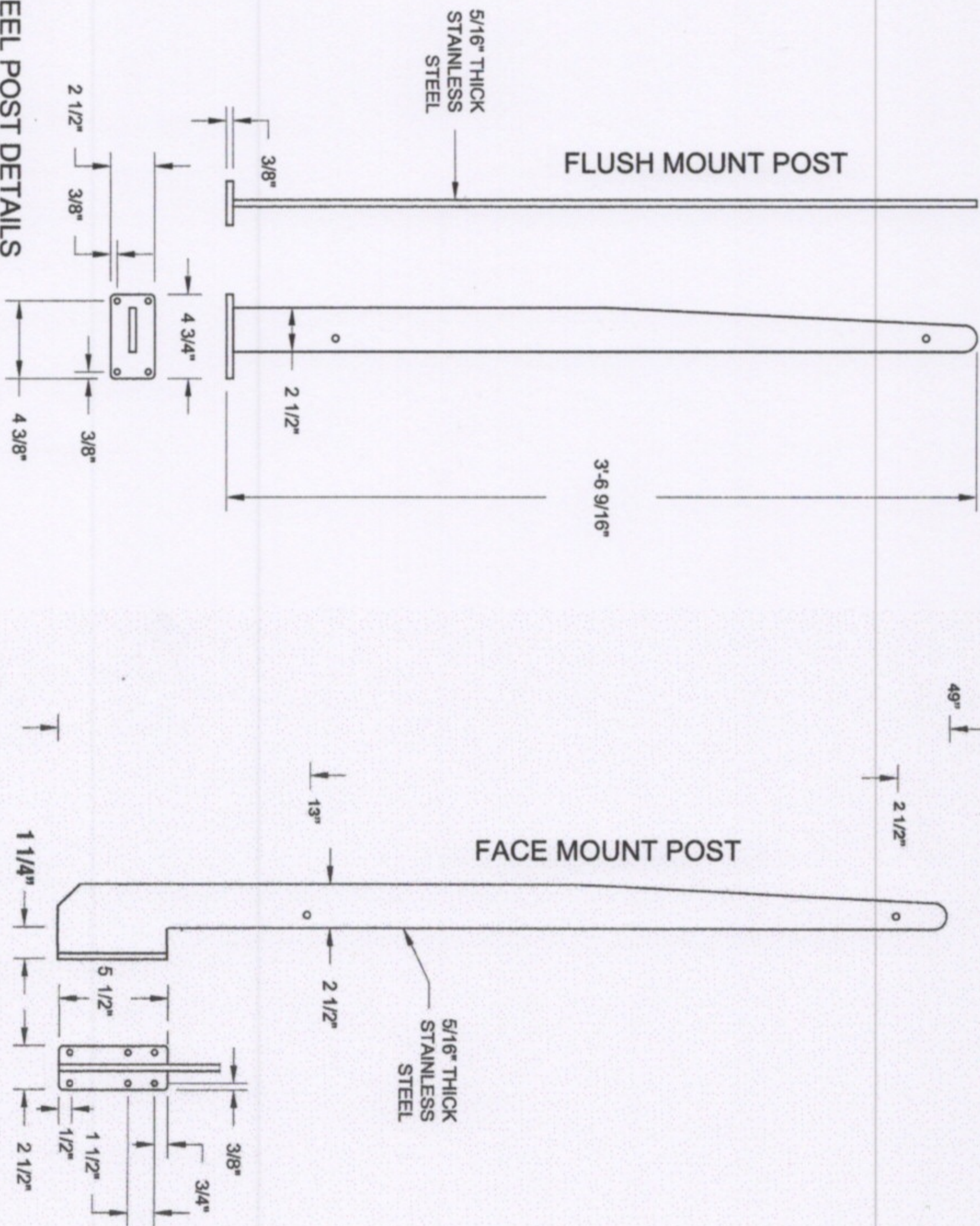
FOR PRODUCT INQUIRIES  
 CONTACT LIV BUILDING  
 PRODUCTS AT  
 905-852-3733

SEE NOTES ON DRAWING S1

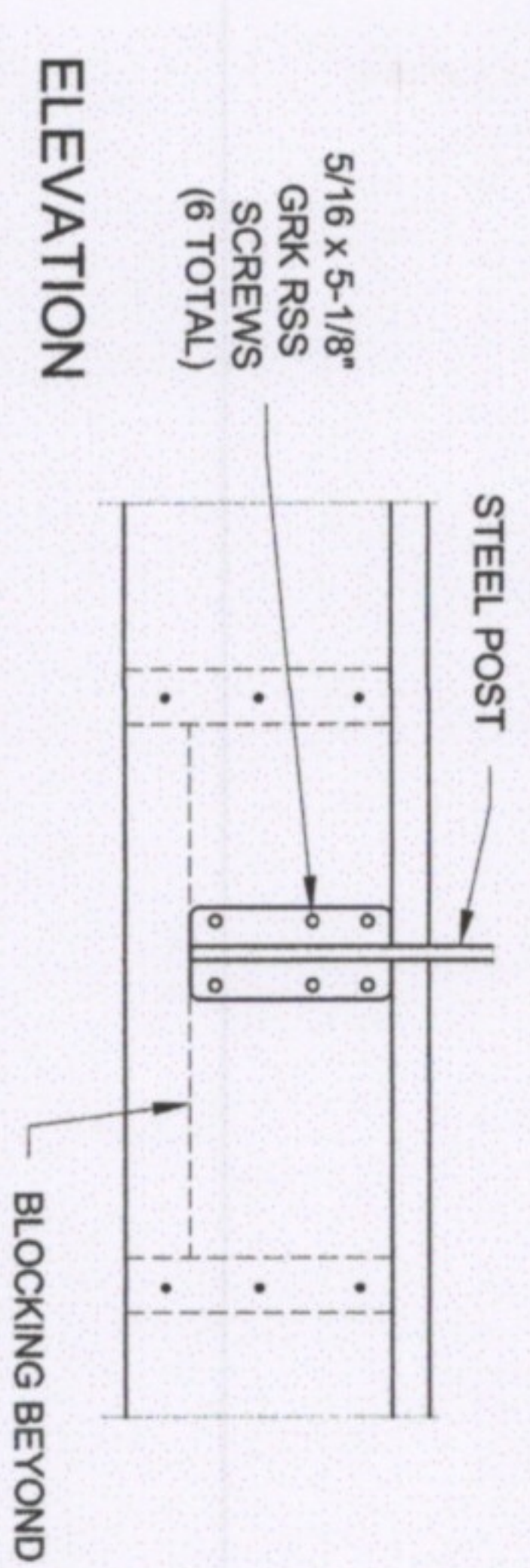
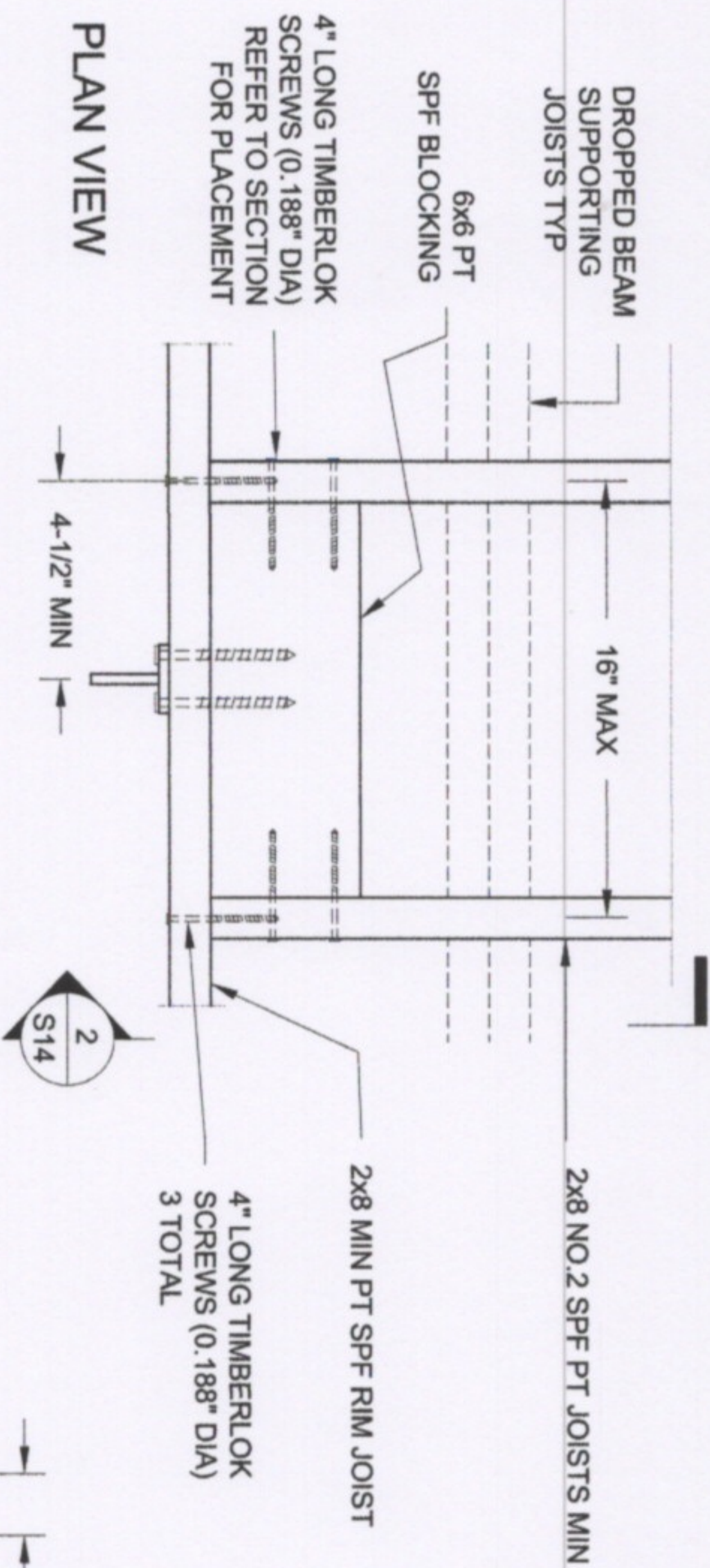


**INVISIRAIL**  
 GLASS RAIL SYSTEM

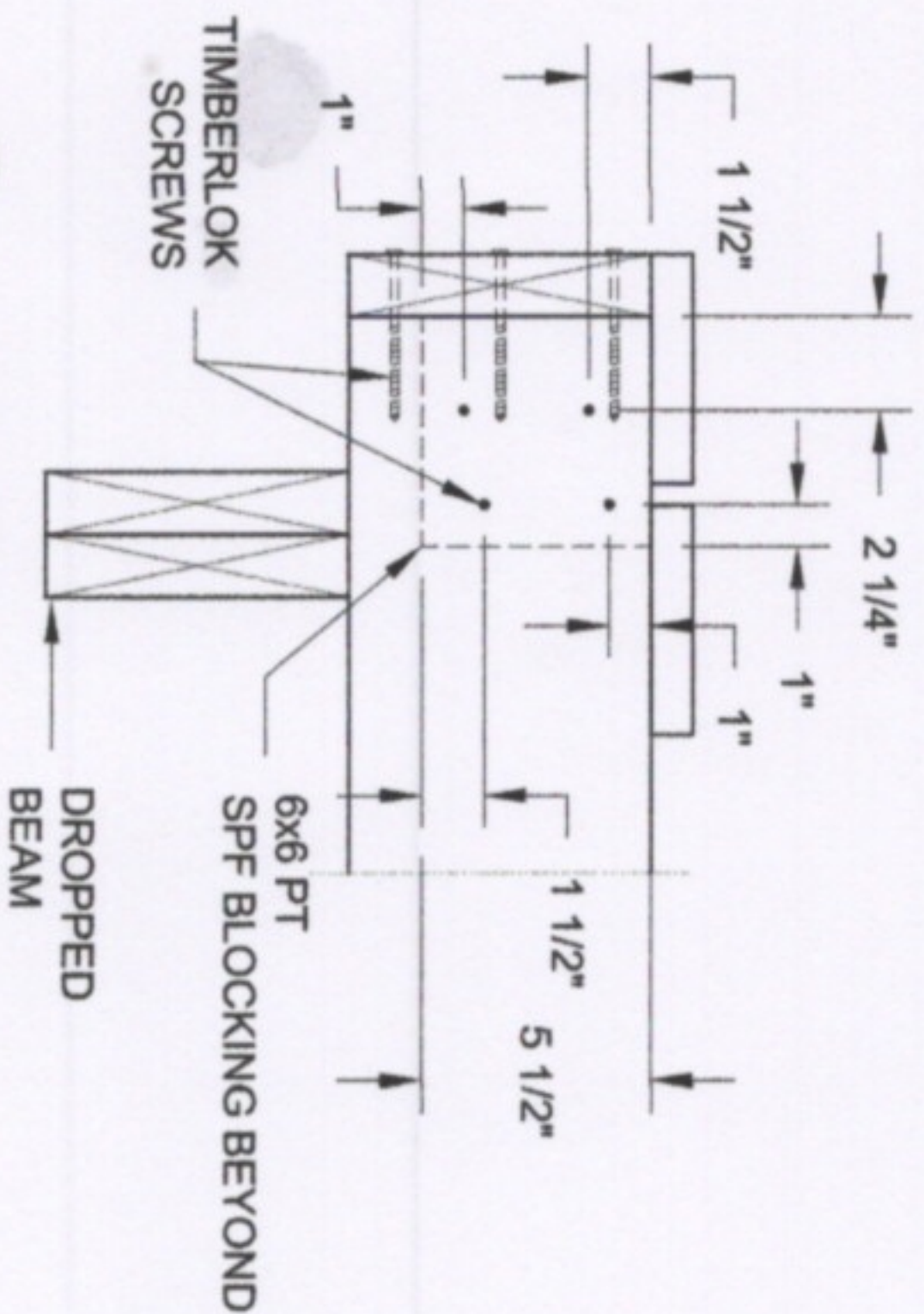
PROJECT:	
INVISIRAIL STEEL POST DETAILS	
PROJECT No.:	DRAWING No.:
	S13 R1







**1** FACE MOUNT STEEL POST CONNECTION  
**S14** 1-1/2" = 1'-0"



**2** SECTION  
**S14** 1-1/2" = 1'-0"

FOR PRODUCT INQUIRIES  
 CONTACT LIV BUILDING  
 PRODUCTS AT  
 905-852-3733



PROJECT:	
LIV BUILDING PRODUCTS RESIDENTIAL INVISIRAIL GUARD	
FLUSH MOUNT INVISIRAIL POST CONNECTION DETAIL	
PROJECT No.:	DRAWING No.:
	S14

SEE NOTES ON DRAWING S1